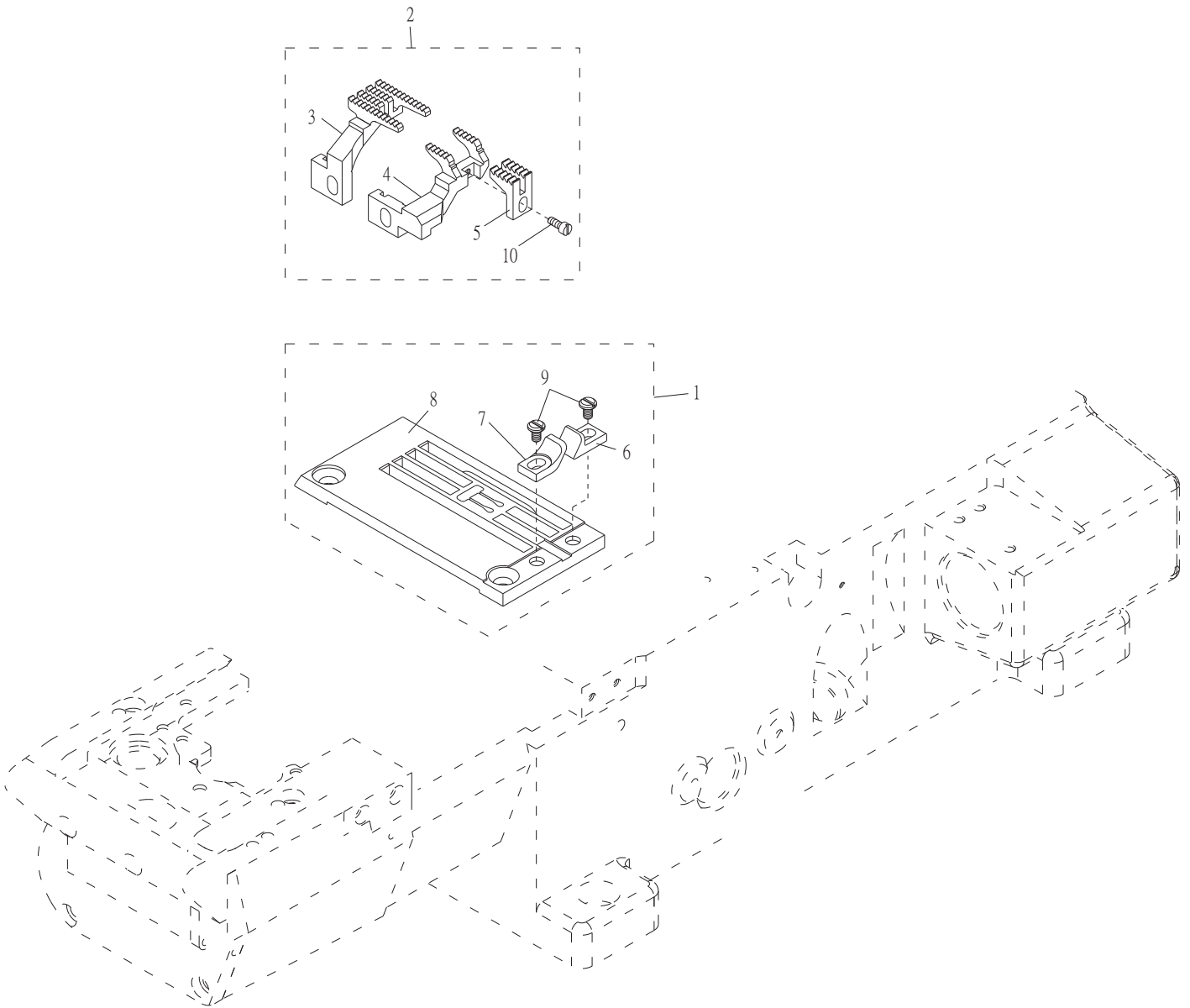


1. CT9013-0 / CTD9013-0 包縫骨壓縫用零件列表
 Parts List For CT9013-0 / CTD9013-0 Overlock Seam Covering



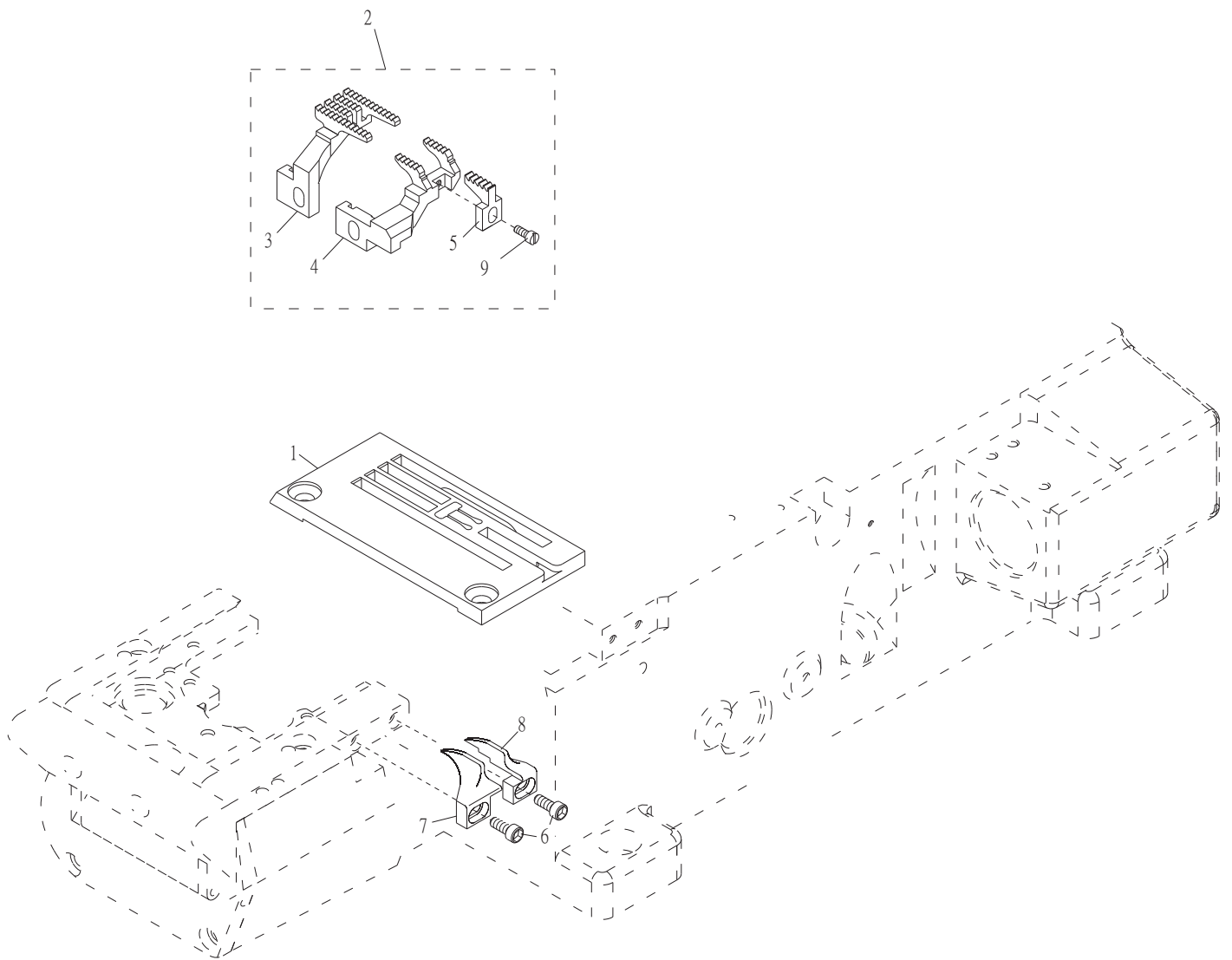
序號 Ref.No.	名稱 Description	針數 Number Of Needle / 針距 Distance Of Needles			
		2 Needle/ 4.0	3 Needle/ 4.8	3 Needle/ 5.6	3 Needle/ 6.4
1	針鉸組 Needle Plate Asm.	5222TP13403	5222TP13483	5222TP13563	5222TP13643
2	送布齒組 Feed Dog Asm.	5222DG0001	5222DG0001	5222DG0001	5222DG0002
3	主送布齒 Main Feed Dog	5220FD00563	5220FD00563	5220FD00563	5220FD00643
4	副送布齒 Diff Feed Dog	5220DF13563	5220DF13563	5220DF13563	5220DF13643
5	輔助送布齒 Aux Feed Dog	5220AF13560	5220AF13560	5220AF13560	5220AF13640
8	針鉸 Needle Plate	5222TP13403A	5222TP13483A	5222TP13563A	5222TP13643A

1. CT9013-0 / CTD9013-0 包縫骨壓縫用零件列表

Parts List For CT9013-0 / CTD9013-0 Overlock Seam Covering

序號	物料編號	名稱	單位用量
Ref. No.	Parts Number	Description	Amt. Req.
1	-----	針鉸組 Needle Plate Asm. (See left page) -----	1
2	-----	送布齒組 Feed Dog Asm. (See Left Page)-----	1
3	-----	主送布齒 Main Feed Dog (See left page) -----	1
4	-----	副送布齒 Diff Feed Dog (See left page) -----	1
5	-----	輔助送布齒 Aux Feed Dog (See left page) -----	1
6	22001301061	右導模 Fabric Guide (R)-----	1
7	22001301071	左導模 Fabric Guide (L)-----	1
8	-----	針鉸 Needle Plate (See Left page) -----	1
9	8MB75180405A	螺絲 Screw (CT0529 M2.5-0.45*3.5) -----	2
10	8MB75180506B	螺絲 Screw -----	1

2. CT9013-1 / CTD9013-1 包縫骨壓縫用零件列表
 Parts List For CT9013-1 / CTD9013-1 Overlock Seam Covering



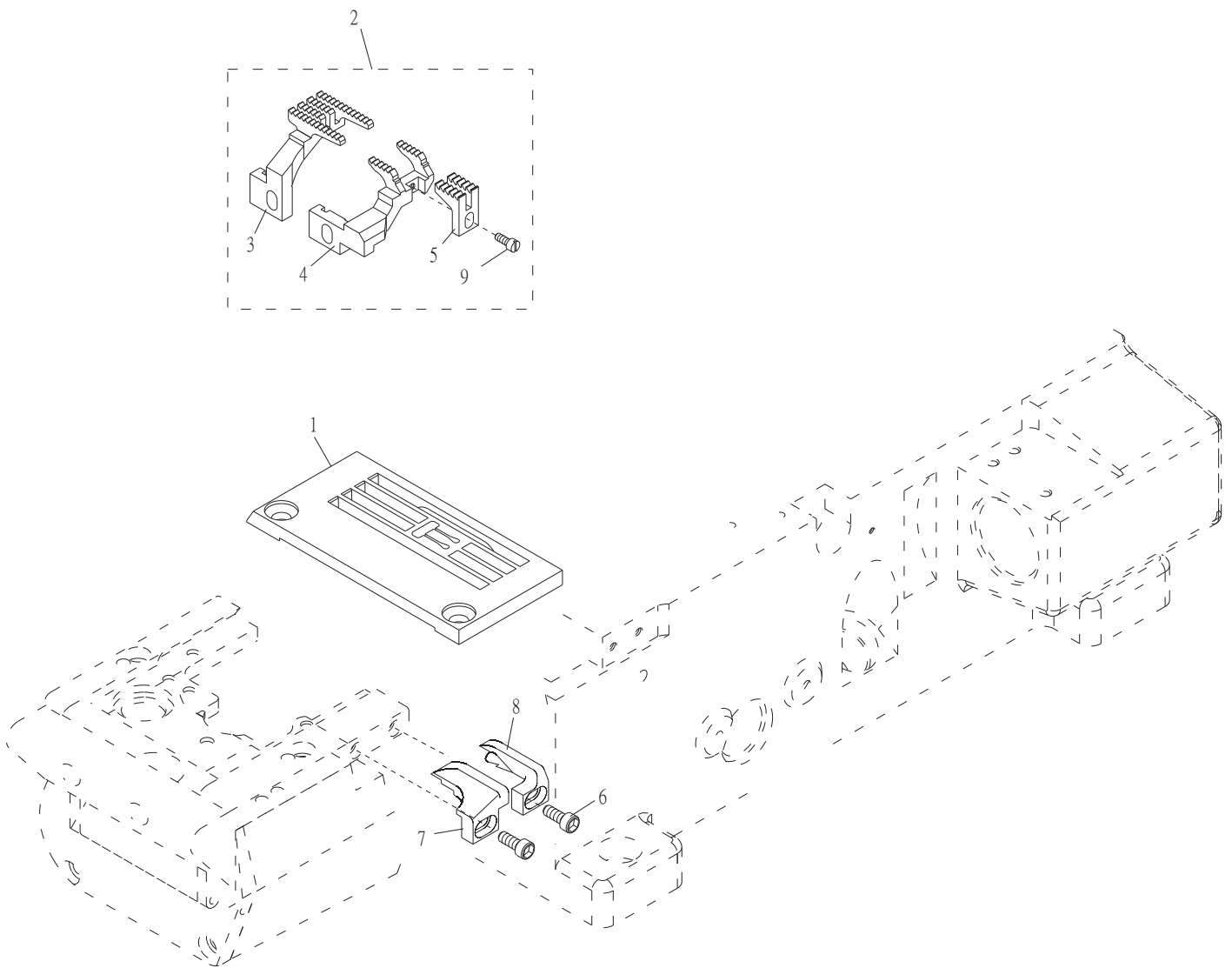
序號 Ref.No.	名稱 Description	針數 Number Of Needle / 針距 Distance Of Needles			
		2 Needle/ 4.0	3 Needle/ 4.8	3 Needle/ 5.6	3 Needle/ 6.4
1	針板 Needle Plate	5222TP13404	5222TP13484	5222TP13564	5222TP13644
2	送布齒組 Feed Dog Asm.	5222DG0003	5222DG0003	5222DG0003	5222DG0004
3	主送布齒 Main Feed Dog	5220FD00563	5220FD00563	5220FD00563	5220FD00643
4	副送布齒 Diff Feed Dog	5220DF13563	5220DF13563	5220DF13563	5220DF13643
5	輔助送布齒 Aux Feed Dog	5220AF13561	5220AF13561	5220AF13561	5220AF13561

2. CT9013-1 / CTD9013-1 包縫骨壓縫用零件列表

Parts List For CT9013-1 / CTD9013-1 Overlock Seam Covering

序號	物料編號	名稱	單位用量
Ref. No.	Parts Number	Description	Amt. Req.
1	-----	針板 Needle Plate (See Left page) -----	1
2	-----	送布齒組 Feed Dog Asm. (See Left Page)-----	1
3	-----	主送布齒 Main Feed Dog (See Left page) -----	1
4	-----	副送布齒 Diff Feed Dog (See Left page) -----	1
5	-----	輔助送布齒 Aux Feed Dog (See Left page) -----	1
6	8MM03200606A	螺絲 Screw -----	2
7	2200130401	左導模 Fabic Guide (L) -----	1
8	2200130402	右導模 Fabic Guide (R) -----	1
9	8MB75180506B	螺絲 Screw -----	1

3. CT9013-2 / CTD9013-2 包縫骨壓縫用零件列表
 Parts List For CT9013-2 / CTD9013-2 Overlock Seam Covering



序號 Ref.No.	名稱 Description	針數 Number Of Needle / 針距 Distance Of Needles			
		2 Needle/ 4.0	3 Needle/ 4.8	3 Needle/ 5.6	3 Needle/ 6.4
1	針板 Needle Plate	5222TP13402	5222TP13482	5222TP13562	5222TP13642
2	送布齒組 Feed Dog Asm.	5222DG0001	5222DG0001	5222DG0001	5222DG0002
3	主送布齒 Main Feed Dog	5220FD00563	5220FD00563	5220FD00563	5220FD00643
4	副送布齒 Diff Feed Dog	5220DF13563	5220DF13563	5220DF13563	5220DF13643
5	輔助送布齒 Aux Feed Dog	5220AF13560	5220AF13560	5220AF13560	5220AF13640

3. CT9013-2 / CTD9013-2 包縫骨壓縫用零件列表

Parts List For CT9013-2 / CTD9013-2 Overlock Seam Covering

序號	物料編號	名稱	單位用量
Ref. No.	Parts Number	Description	Amt. Req.
1	-----	針板 Needle Plate (See Left page) -----	1
2	-----	送布齒組 Feed Dog Asm. (See Left Page)-----	1
3	-----	主送布齒 Main Feed Dog (See Left page) -----	1
4	-----	副送布齒 Diff Feed Dog (See Left page) -----	1
5	-----	輔助送布齒 Aux Feed Dog (See Left page) -----	1
6	8MM03200606A	螺絲 Screw -----	2
7	2200130403	左導模 Fabric Guide (L) -----	1
8	2200130404	右導模 Fabric Guide (R) -----	1
9	8MB75180506B	螺絲 Screw -----	1