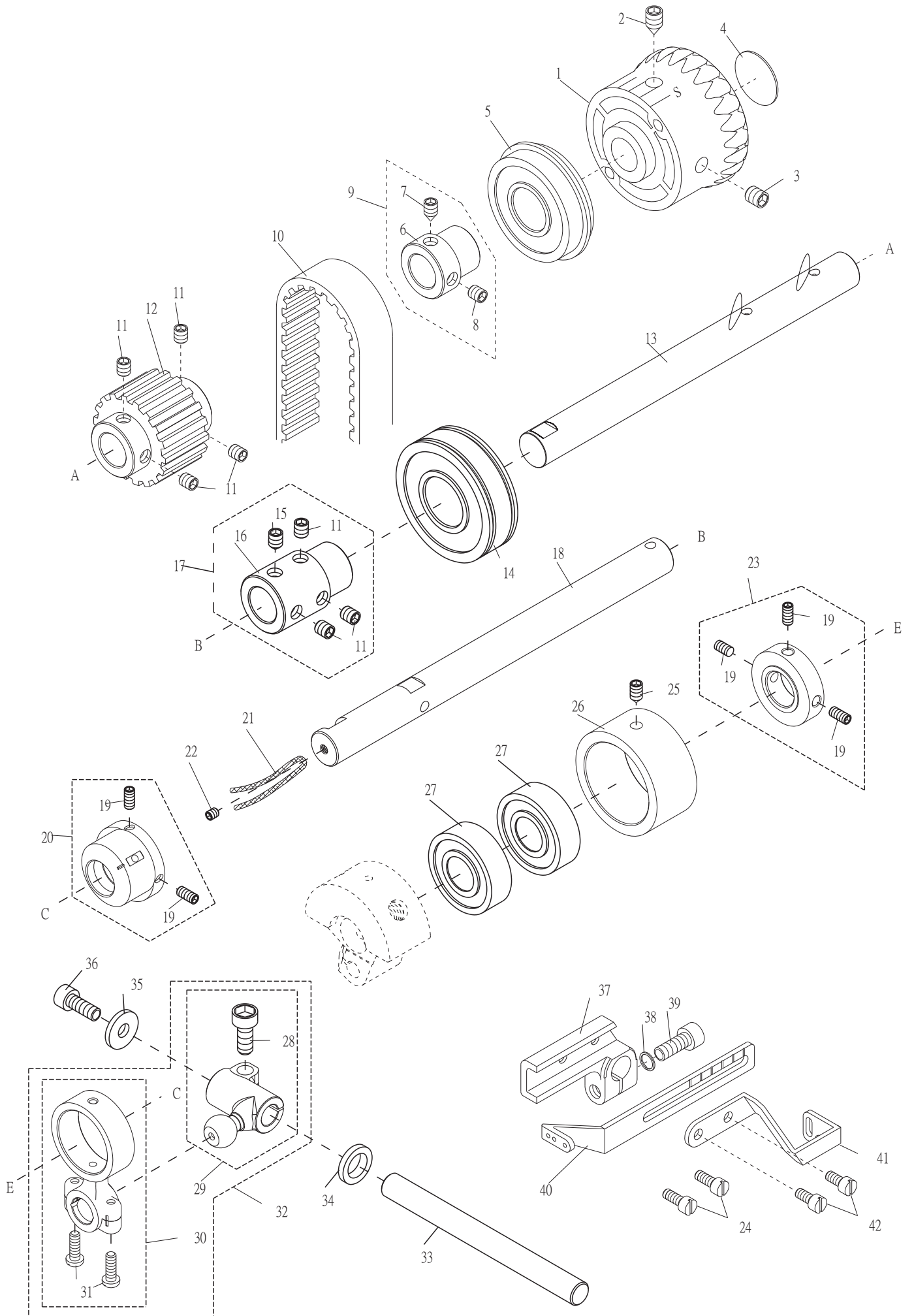


6. CTF9011/CTF9611 上軸與相關零件 Upper Main Shaft Components For CTF9011/CTF9611



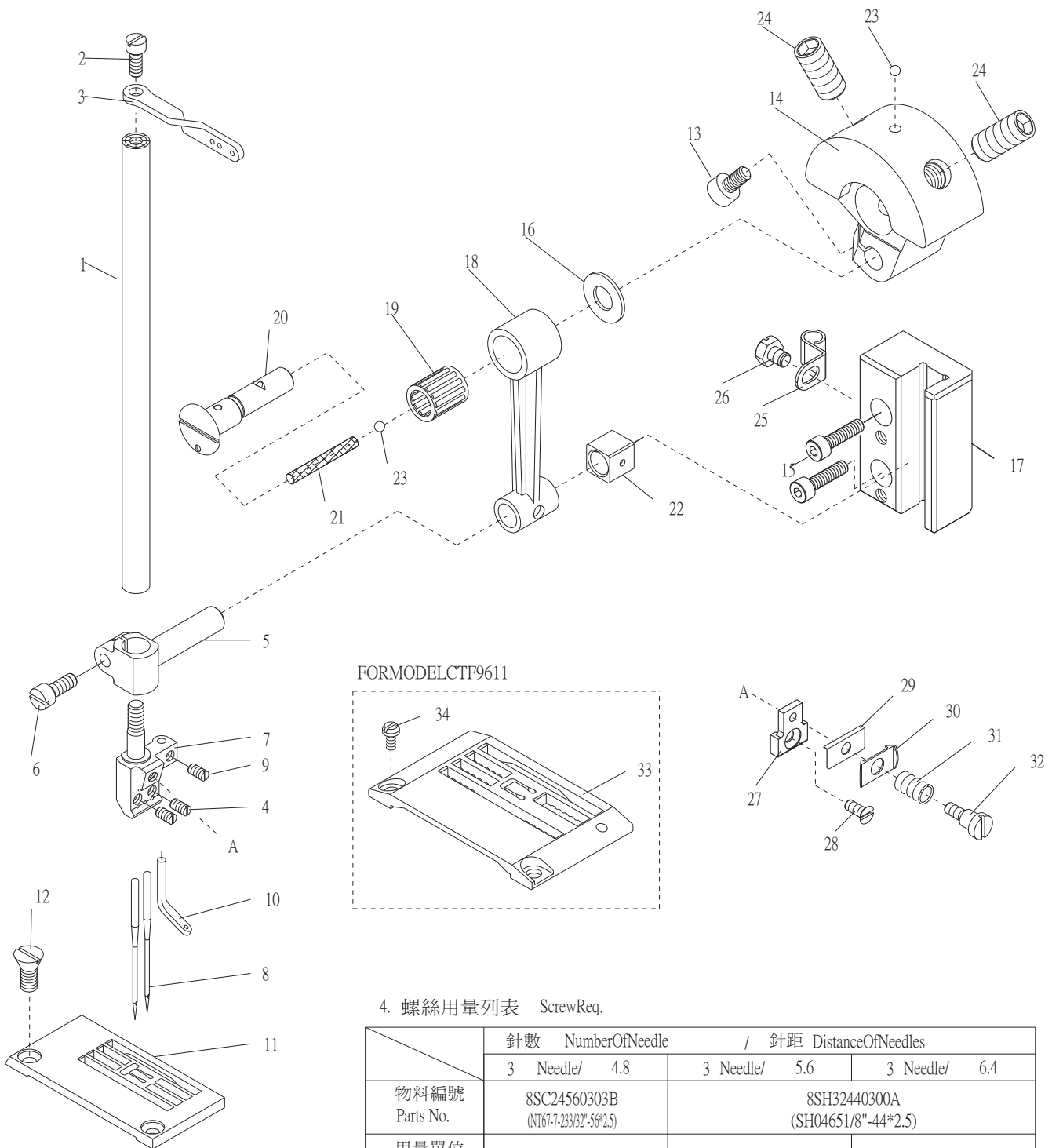
6. CTF9011/CTF9611 上軸與相關零件 Upper Main Shaft Components For CTF9011/CTF9611

序號	物料編號	名稱	單位用量
Ref. No.	Parts Number	Description	Amt.Req.
1	2274110601	手輪 Handwheel -----	1
2	8MN06401100C	螺絲 Screw(CT0502 M6-1*8) -----	1
3	8MN06400800A	螺絲 Screw(CT0244 M6-1*6) -----	1
4	66480-11	銘板 Plate -----	1
5	90BB2047144	滾珠軸承 Ball Bearing -----	1
6	2200000606	套管接頭 Joint -----	1
7	8MN05320600C	螺絲 Screw(CT350248 M5-0.8*6) -----	1
8	8MN05320600A	螺絲 Screw(MT0729 M5-0.8*6) -----	1
9	222A0000645	套管接頭組 Joint Asm -----	1
10	2200000607	齒形皮帶 Timeing Belt -----	1
11	8MN06400600A	螺絲 Screw(CT0244 M6-1*6) -----	7
12	2200000608	齒形皮帶輪 Timeing Pulley -----	1
13	2274110613	軸 Shaft -----	1
14	90BB204714	滾珠軸承 Ball Bearing -----	1
15	8MN06400800C	螺絲 Screw(CT0502 M6-1*8) -----	1
16	2200000610	套管接頭 Joint -----	1
17	227411A0617	套管接頭組 Joint Asm -----	1
18	2274110618	曲軸 Crank Shaft -----	1
19	8MN05320500E	螺絲 Screw(CT0903 M5-0.8*5) -----	5
20	2274110620	偏心輪 Eccentric -----	1
21	66800	油線 Oil Wick -----	1
22	8MN04280400A	螺絲 Screw(CT0229 M4-0.7*4) -----	1
23	2274110623	定位環 Collar -----	1
**24	8MB85240607K	螺絲 Screw(CT0637 M3.5-0.6*6) -----	2
25	8MN06400600C	螺絲 Screw(CT80617 M6-1*6) -----	1
26	2240000612	軸承套筒 Bearing Sleeve -----	1
27	90BB1535115	滾珠軸承 Ball Bearing -----	2
28	8MM06401210A	螺絲 Screw (F11-03 M6-1*12) -----	1
29	2274110629	曲柄Ball Lever -----	1
30	2274110630	連桿 Connecting Rod -----	1
31	8MB04281207K	螺絲 Screw(CT0239 M4-0.7*12) -----	2
32	227411A0632	連桿組 Connecting Rod Asm -----	1
33	2200000629	軸 Shaft -----	1
34	2100001542	墊圈Washer -----	1
35	2200000627	墊圈Washer -----	1
36	8MM05321009A	螺絲Screw (CT0626 M5-08*10) -----	1
37	2200000630	承座 Bracket -----	1
38	90SW050	彈簧墊圈 Spring Washer -----	1
39	8MM05321409A	螺絲 Screw (CT0632 M5-0.8*14) -----	1
40	2200000633	針線揚線桿 Thread Take-up -----	1
*41	2220000634	裝飾線揚線桿 Thread Take-up -----	1
*42	8MB85240807K	螺絲 Screw (FT0555 M3.5-0.6*8) -----	2

*具有上飾線With top cover thread

**不具有上飾線Without top cover thread

7. CTF9011/CTF9611 針棒與相關零件 Needle Bar Components For CTF9011/CTF9611



4. 螺絲用量列表 ScrewReq.

	針數 NumberOfNeedle		/ 針距 DistanceOfNeedles		
	3 Needle/	4.8	3 Needle/	5.6	3 Needle/
物料編號 Parts No.	8SC24560303B (NT67.7-239/32"-56*2.5)		8SH32440300A (SH04651/8"-44*2.5)		
用量單位 Amt. Req.	3		3		3

序號 Ref. No.	名稱 Description	針數 NumberOfNeedle		/ 針距 DistanceOfNeedles		
		3 Needle/	4.8	3 Needle/	5.6	3 Needle/
7	針留 needle clamp	5220NC00485		5220NC00561		5220NC00641
11	針板 Needle Plate	5220TP00484		5220TP00564		5220TP00642
**33	針板 Needle Plate	5226TP11480		5226TP11560		5226TP11640

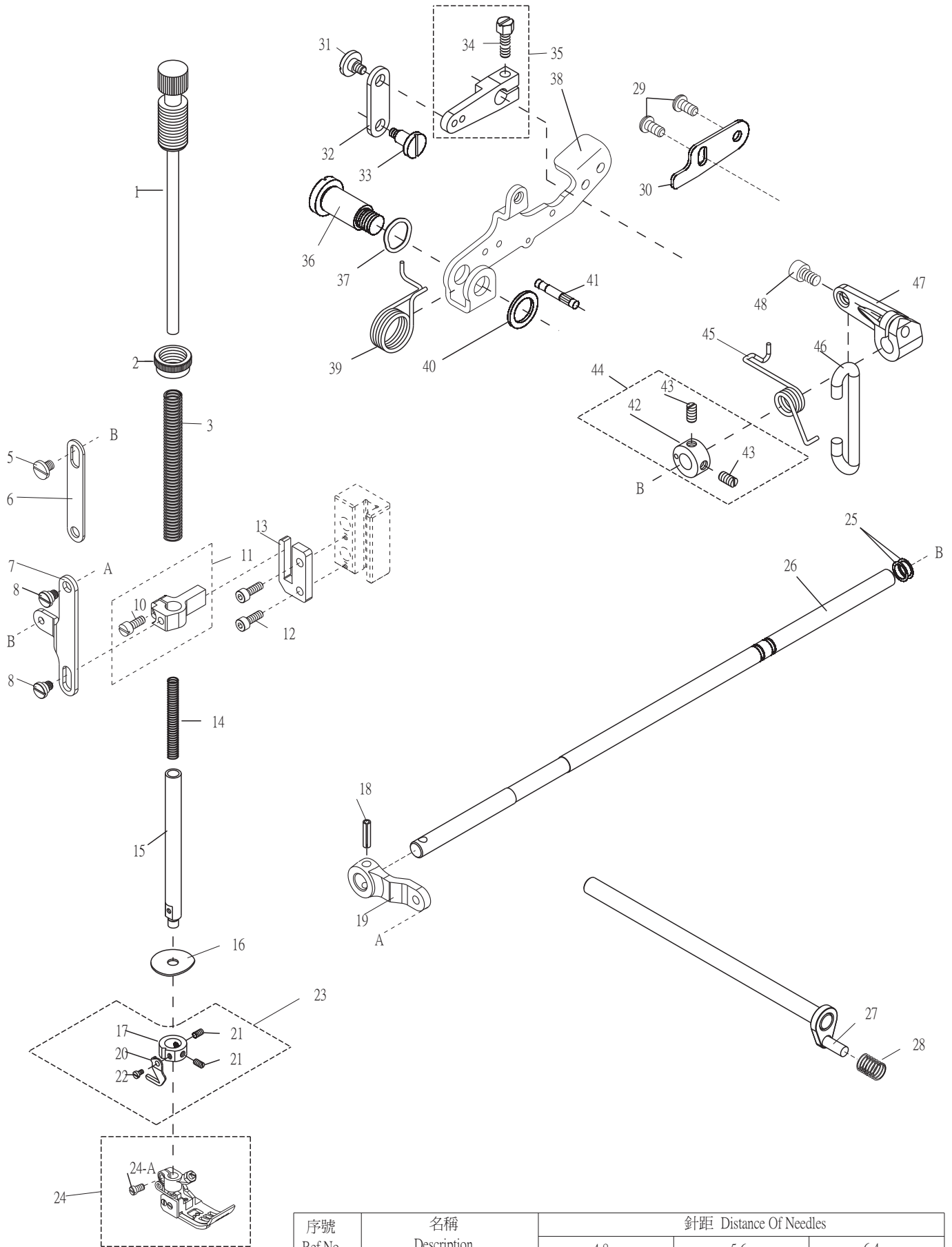
7. CTF9011/CTF9611 針棒與相關零件 Needle Bar Components For CTF9011/CTF9611

序號 Ref.No.	圖號 Parts No.	名稱 Description	單位用量 Amt .Req.
1	22000007011	針棒 Needle Bar -----	1
2	8MB85240607K	螺絲 Screw (CT0637 M3.5-0.6*6) -----	1
3	2200000703	導線 Thread Guide -----	1
4	-----	螺絲 Screw (See Left Page) -----	-
5	2210000705	針棒驅動銷 Needle Bar Clamp -----	1
6	8MB95301107K	螺絲 Screw (CT0706 M4.5-0.75*11) -----	1
7	-----	針留 Needle clamp (See Left Page) -----	1
8	66725-11-5	針 Needle --(UY128GAS)-----	3
9	8SH32440300A	螺絲 Screw (SH0465 1/8"-44*2.5) -----	1
*10	2200000710	導線 Thread Guide -----	1
11	-----	針板 Needle Plate (See Left Page) -----	1
12	8SF36400706C	螺絲 Screw (CT0712 9/64"-40*7.5) -----	2
13	8MM05321009A	螺絲Screw (C06-26 M5-0.8*10) -----	1
14	2270000714	平衡錘Balance Weight -----	1
15	8MM04281607A	螺絲Screw (FT0202 M4-0.7*16) -----	2
16	2270000716	墊圈Washer -----	1
17	2274110717	滑道GuideBlock -----	1
18	2210000720	連桿Connecting Rod -----	1
19	90NB081113	滾針軸承Needle Bearing -----	1
20	2270000720	曲柄銷Rod Pin -----	1
21	66800	油線Oil Wick -----	1
22	2200000722	滑塊Slide Block -----	1
23	2100001404	孔塞Plug -----	2
24	8MN08401600E	螺絲Screw (CT0618 M8-1*16) -----	2
25	2274110725	夾環 Clamp -----	1
26	8MK04280507A	螺絲 Screw (WPC-01-06 M4-0.7*5) -----	1
27	2274110727	張力控制組座 Thread Retainer Support -----	1
28	8ME03200506A	螺絲 Screw (C03-41 M3-0.5*4.5) -----	1
29	2200000348	針線控制板 Thread Guide Plate -----	1
30	2200000349	針線控制壓板 Tension Control plate -----	1
31	22000003501	彈簧 Spring -----	1
32	8MC03200807G	螺樁 Stud (CT0351 M3-0.5*8) -----	1
**33	-----	針板 Needle Plate (See Left Page) -----	1
**34	8MB03200506K	螺絲 Screw (CT0525 M3-0.5*5) -----	2

*具有上飾線 With top cover thread

** CTF9611 機型使用 (For CTF9611 Use)

8.CTF9011/CTF9611 壓腳與相關零件 Presser Foot Components For CTF9011/CTF9611



序號 Ref.No.	名稱 Description	針距 Distance Of Needles		
		4.8	5.6	6.4
24	壓腳 Presser foot asm	5227PFT00480	5227PFT00560	5227PFT00640

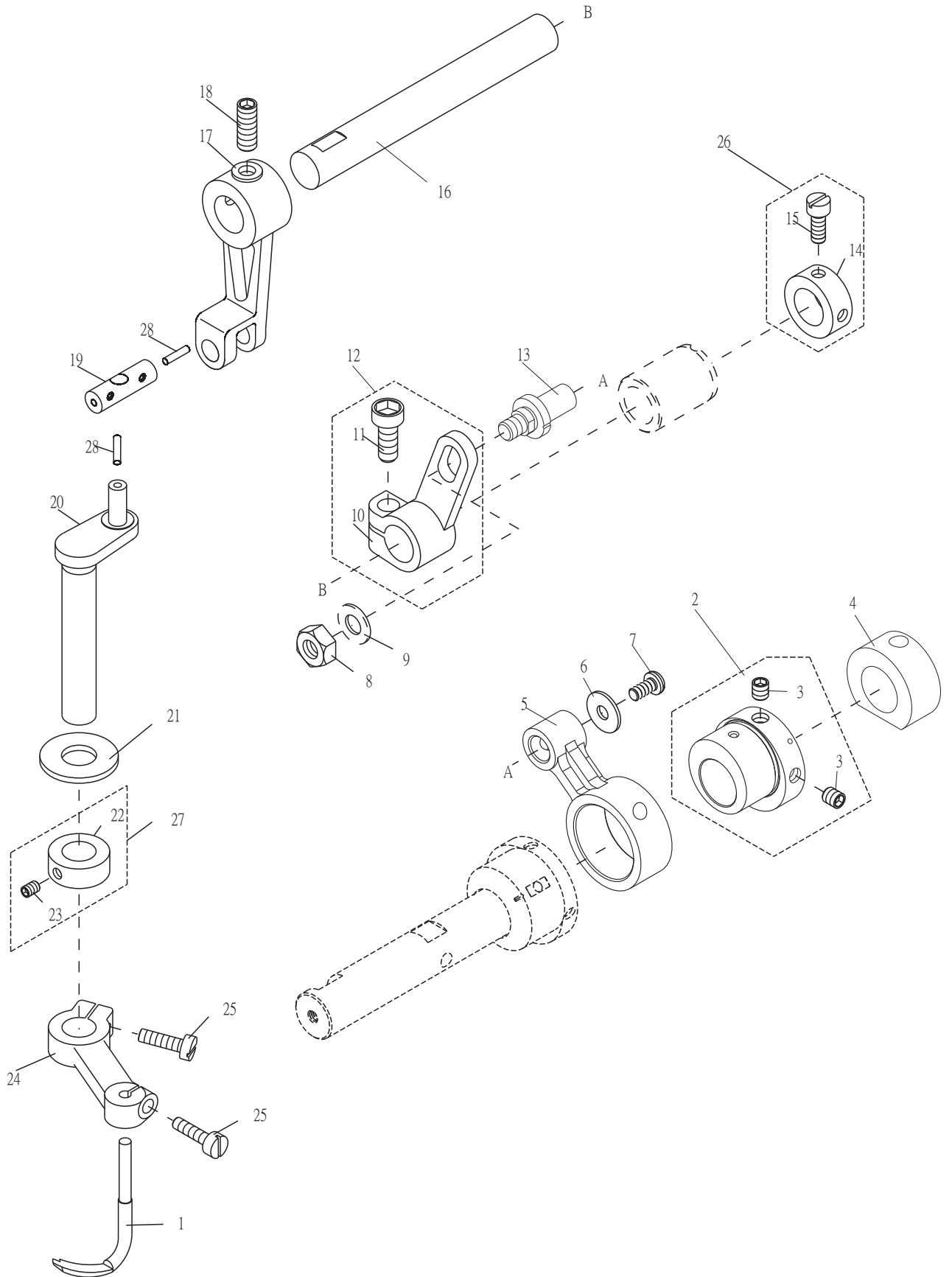
8.CTF9011/CTF9611 壓腳與相關零件 Presser Foot Components For CTF9011/CTF9611

序號	物料編號	名稱	單位用量
Ref. No.	Parts Number	Description	Amt.Req.
1	2220000801	壓力調整螺樁Spring Regulator -----	1
2	2220000803	螺帽Nut -----	1
3	2200000804	彈簧Spring -----	1
4	-----	-----	-
5	8MB05320509G	螺樁Stud (CT0802 M5-0.8*5) -----	1
6	2274110806	連桿Link -----	1
7	2274110807	連桿Lever -----	1
8	8MB05320709G	螺樁 Stud (CTF90-08-08 M5-0.8*6.5) -----	2
9	-----	-----	-
10	8MB95301107K	螺絲 Screw (CT0706 M4.5-0.75*11) -----	1
11	2274110811	壓腳棒連結臂Presser Bar Clamp -----	1
12	8MM04281207A	螺絲 Screw (CT0202 M4-0.7*12) -----	2
13	2274110813	滑道Guide Block -----	1
14	2200000809	彈簧Spring -----	1
15	2200000810	壓腳棒Presser Bar -----	1
16	2200000811	阻油片 Oil Separator -----	1
17	2220000812	限動環 Stop Collar -----	1
18	90SP0416	彈簧銷 Spring Pin -----	1
19	2274110819	連桿Lever -----	1
20	2220000813	固定切刀Knife -----	1
21	8MH85240300A	螺絲Screw (CT0813 M3.5-0.6*3) -----	2
22	8MB03200405A	螺絲 Screw (FT0548 M3-0.5*4) -----	1
23	222A0000842	限動環組 Stop Collar Asm -----	1
24	-----	壓腳 Presser Foot(See Left Page) -----	1
24-A	8MB85240706A	螺絲 Screw (CTS0122 M3.5-0.6*7) -----	1
25	2240000846	O 形油環 O Ring -----	2
26	22400008241	軸Shaft -----	1
27	2240000838	軸Shaft -----	1
28	4UTB000411	彈簧 Spring -----	1
*29	8MP06401011A	螺絲 Screw (MT0234 M6-1*10) -----	2
*30	2240000835	限位片 Stopper -----	1
*31	2310000344	螺樁 Stud -----	1
*32	2240000808	連桿Link -----	1
*33	2310000343	螺樁 Stud -----	1
*34	8MK95301407A	螺絲 Screw (CT0837 M4.5-0.75*14) -----	1
*35	2240000806	曲柄Drive Arm -----	1
36	2310001013	螺樁 Stud -----	1
37	2310001207	波形墊圈 Corrugated Ring -----	1
38	22400008331	揚昇臂 Lifter Arm -----	1
39	2240000839	彈簧 Spring -----	1
40	2310001012	墊圈 Washer -----	1
41	2310001017	銷 Pin -----	1
42	2200000822	定位環 Collar -----	1
43	8MC95300606F	螺絲 Screw (CT0823 M4.5-0.75*5.5) -----	2
44	220A0000825	定位環組Collar Asm.-----	1
45	2240000826	彈簧 Spring -----	1
46	2240000802	吊桿 Lifter Connecting Plate -----	1
47	2240000827	連桿Lever -----	1
48	8MM06401210A	螺絲Screw (F1103 M6-1*12) -----	1

* 為標準型專用,切線(UT系列)時不使用

* For basic model only. Not applicable to thread trimmer (UT series) series.

9. CTF9011 / CTF9611 裝飾線驅動機構 Spreader Mechanism For CTF9011 / CTF9611



9. CTF9011 / CTF9611 裝飾線驅動機構 Spreader Mechanism For CTF9011 / CTF9611

序號 Ref.No.	圖號 Parts No.	名稱 Description	單位用量 Amt .Req.
1	5220SL00560	裝飾線結線鉤Spreader -----	1
2	2274110902	偏心輪Eccentric -----	1
3	8MN05320500E	螺絲Screw (CT0903 M5-0.8*5) -----	2
4	2240000642	聚油環 Oil Sleeve -----	1
5	2274110905	連桿Connecting Rod -----	1
6	2200000908	墊圈Washer -----	1
7	8MB04280807K	螺絲Screw (CT0215 M4-0.7*8) -----	1
8	8MA06400510A	螺帽 Nut (CT0533 M6-1*5) -----	1
9	2200000910	墊圈 Washer -----	1
10	2200000914	變距曲柄Lever -----	1
11	8MM06401610A	螺絲 Screw (CT0625 M6-1*16) -----	1
12	222A0000929	變距曲柄Lever -----	1
13	2200000909	曲柄銷Rod Pin -----	1
14	2200000912	定位環Collar -----	1
15	8MC95300606F	螺絲Screw (CT0823 M4.5-0.75*5.5) -----	2
16	2200000916	軸Shaft -----	1
17	2220000917	連桿Connecting Rod -----	1
18	8MN06400600A	螺絲Screw (CT0244 M6-1*6) -----	2
19	2220000919	連桿銷Rod Pin -----	1
20	2220000920	曲軸Crank Shaft -----	1
21	2200000921	墊圈 Washer -----	1
22	2200000922	定位環Collar -----	1
23	8MH85240500A	螺絲Screw (CT0923 M3.5-0.6*4.5) -----	2
24	22000009241	擺動臂Spreader Arm -----	1
25	8MB04281207K	螺絲Screw (CT0239 M4-0.7*12) -----	2
26	220A0000926	定位環組Collar Asm -----	1
27	220A0000927	定位環組Collar Asm -----	1
28	66801	油線Oil Wick -----	2