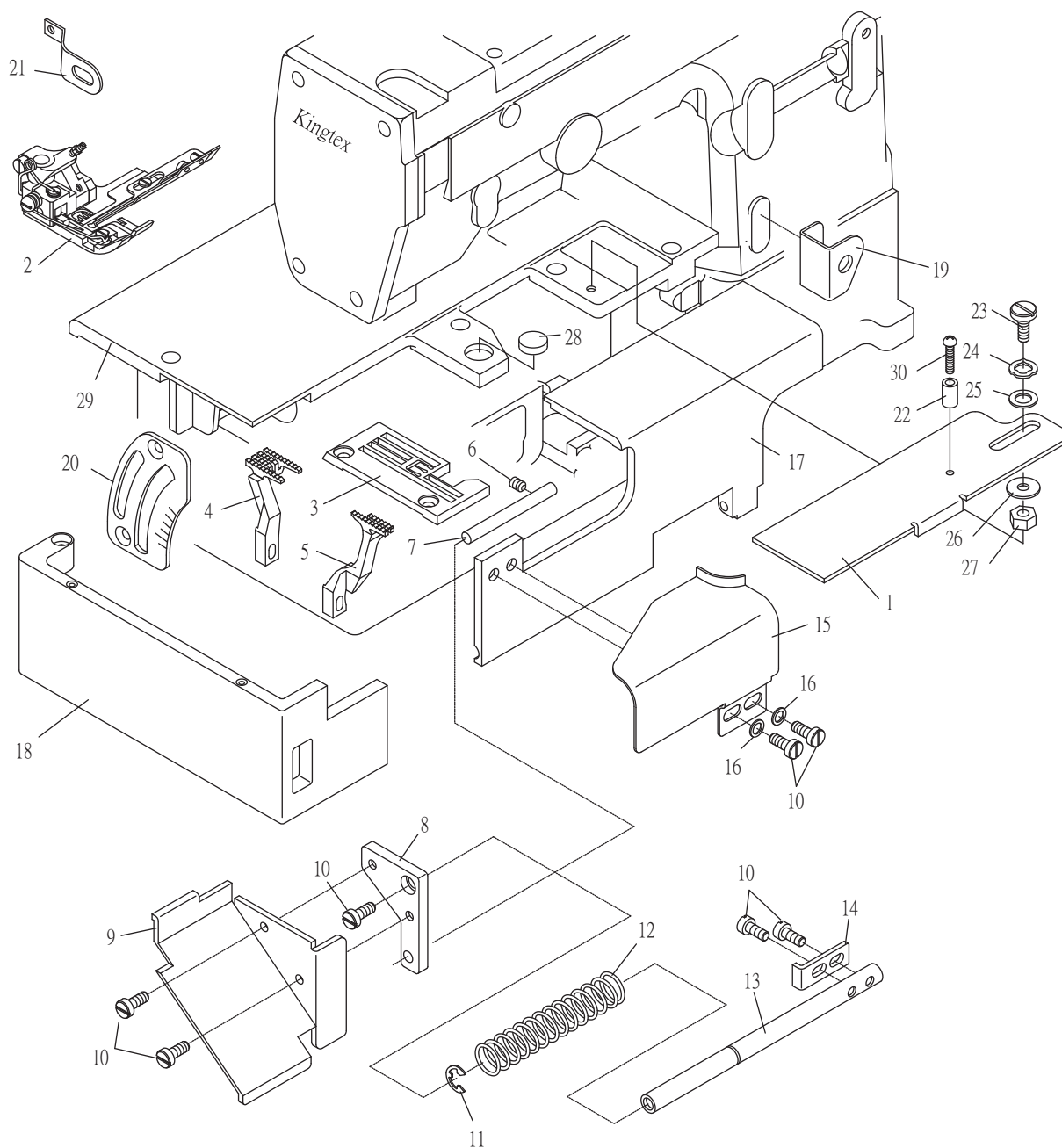


1. FT6529 壓腳,針板,送布齒及各項護蓋列表 Press Foot,Needle Plate,Feed Dog And Conservation Covers



2. 壓腳編號列表 Press Foot

壓腳針距 Press foot	圖號 Parts No.
4.0	5221PF09404 (PFF09404)
4.8	5221PF09484 (PFF09484)
5.6	5221PF09564 (PFF09564)
6.4	5221PF09644 (PFF09644)

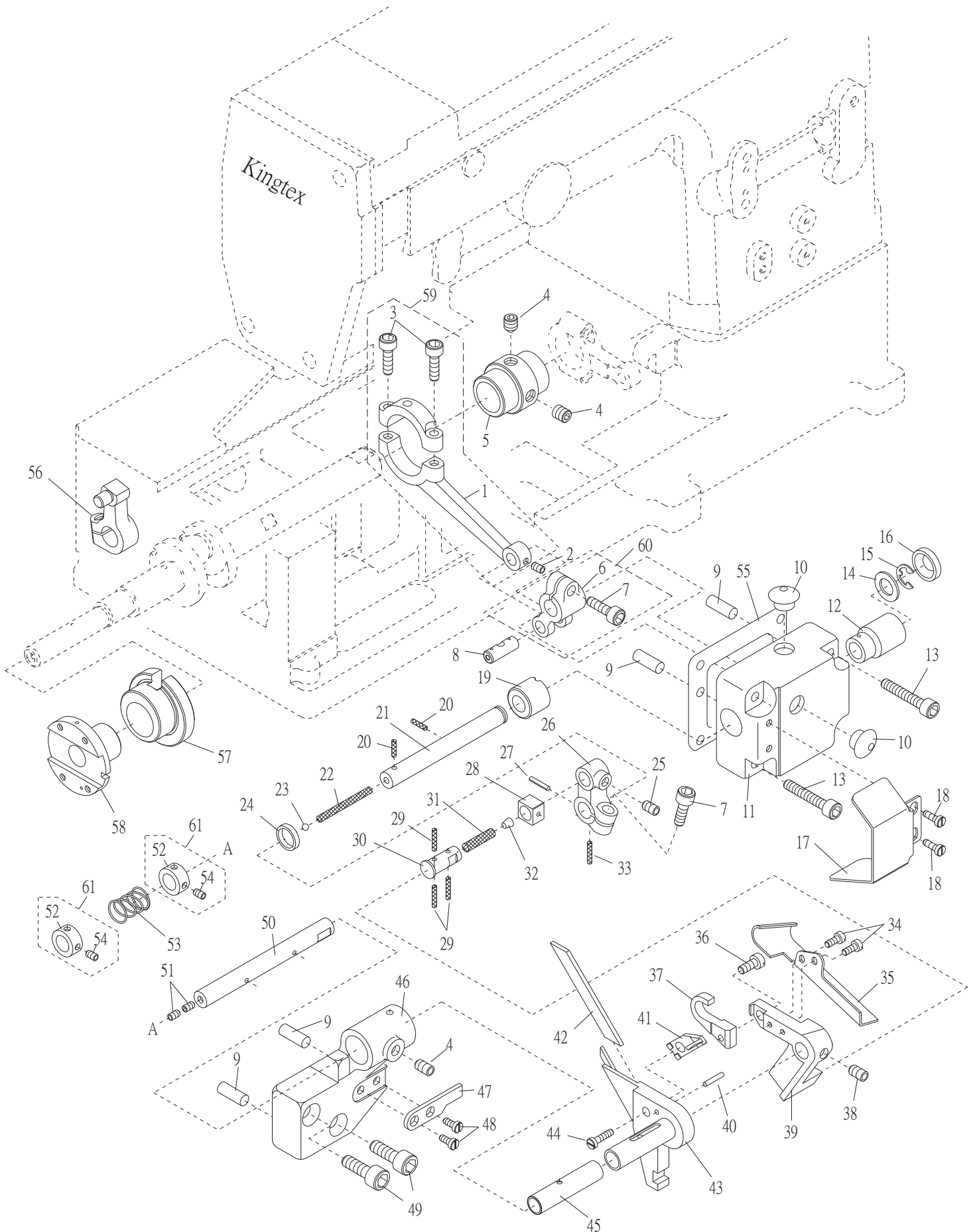
3. 針板編號列表 Needle Plate

針板針距 Thread plate	圖號 Parts No.
4.0	5221TP09400 (TPF09400)
4.8	5221TP09480 (TPF09480)
5.6	5221TP39561 (TPF39561)
6.4	5221TP09641 (TPF09641)

1. FT6529 壓腳,針板,送布齒及各項護蓋列表 Press Foot,Needle Plate,Feed Dog And Conservation Covers

序號	物料編號	名稱	單位用量
Ref. No.	Parts Number	Description	Amt.Req.
1	22100901011	護線蓋 Cloth Plate -----	1
2	-----	壓腳 Presser Foot Asm -----	1
3	-----	針板 Throat Plate -----	1
4	5221FD39560	主送布齒 Main Feed Dog -----	1
5	5221DF09560	副送布齒 Diff Feed Dog -----	1
6	8MN04280400A	螺絲 Screw (CT0229 M4-0.7*4) -----	1
7	2210090107	導桿 Slide Guide -----	1
8	2210090108	固定板 Cover Support -----	1
9	22100901091	導布屑 Chip Guide -----	1
10	8MB04281007K	螺絲 Screw (CT1237 M4-0.7*10) -----	7
11	90ER060	E形扣環 E Ring -----	1
12	2210090112	彈簧 Spring -----	1
13	2210090113	滑桿 Slide Bar -----	1
14	2210090114	止動片 Stopper -----	1
15	2210090115	導模 Edge Guide -----	1
16	2100000223	墊圈 Washer(W3) -----	2
17	2210090117	下座前蓋 Front Cover -----	1
18	2210090118	側蓋 Side Cover -----	1
19	2210090119	底線護線罩 Thread Protect Plate -----	1
20	2210390128	差動刻記板 Regulator Plate -----	1
21	2210390129	護指環 Safety Plate Holder -----	1
22	2210090120	手柄 Spacer -----	1
23	2210090121	螺絲 Screw -----	1
24	90WW060	波型墊圈 Wave Washer -----	1
25	2200000910	墊圈 Washer -----	1
26	2210090124	墊圈 Washer -----	1
27	8MA95300307A	螺帽 Nut -----	1
28	2210090126	磁鐵 Magnet -----	1
29	2210090127	封蓋 Rear Cover -----	1
30	8MC03201306D	螺絲 Screw (UTB0335 M3-0.5*12.5)-----	1

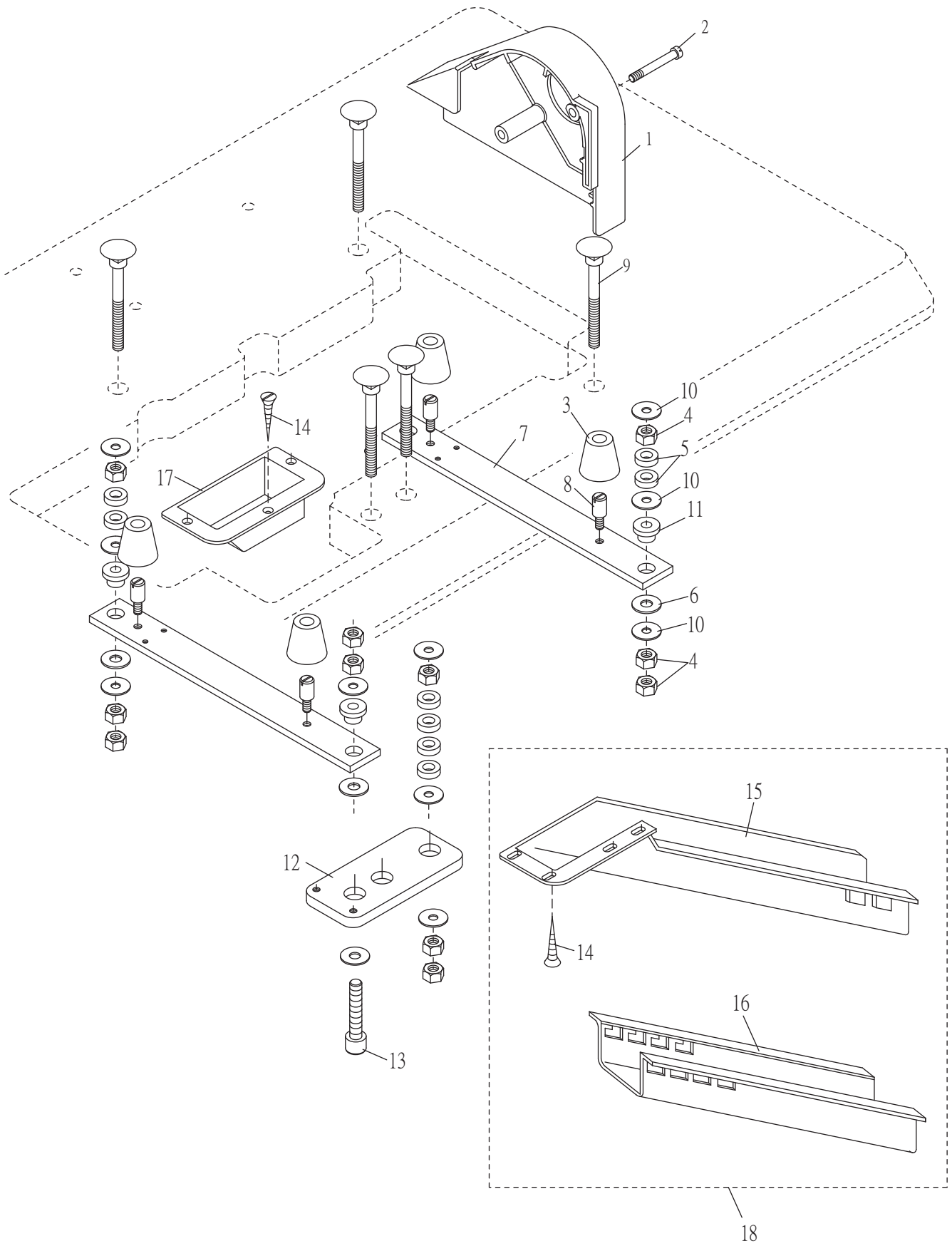
2.上,下刀驅動機構列表Right Hand Upper And Lower Knives Driving Mechanism Components



2.上,下刀驅動機構列表Right Hand Upper And Lower Knives Driving Mechanism Components

序號	物料編號	名稱	單位	用量
Ref. No.	Parts Number	Description	Amt.	Req.
1	2210090201	連桿 Connecting Rod		1
2	8MN03200400C	螺絲 Screw (CT1242 M3-0.5*4)		1
3	8MM04281407A	螺絲 Screw (FT1003 M4-0.7*14)		2
4	8MN05320500E	螺絲 Screw (CT0903 M5-0.8*5)		3
5	2210090205	偏心輪 Eccentric		1
6	2210090206	曲柄 Lever		1
7	8MM05321409A	螺絲 Screw (CT0632 M5-0.8*114)		2
8	2210090208	曲柄銷 Rod Pin		1
9	2210090209	定位銷 Knock Pin		4
10	2200000109	孔塞 Seal Plug		2
11	2210090211	軸承座 Bracket		1
12	2210090212	軸襯 Bushing		1
13	8MM04282507B	螺絲 Screw (FT0719 M4-0.7*25)		4
14	2210000533	墊圈 Washer		1
15	90ER060	E形扣環 E Ring		1
16	2210090216	孔塞 Plug		1
17	2210090217	護蓋 Oil Defender		1
18	8MC04280507D	螺絲 Screw (CT0122 M4-0.7*5)		2
19	2210090219	軸襯 Bushing		1
20	66800	油線 Oil Wick		2
21	2210090221	軸 Shaft		1
22	66800	油線 Oil Wick		1
23	2210090223	孔塞 Plug		1
24	2210090224	油封 Oil Seal		1
25	8MN04280400A	螺絲 Screw (CT0229 M4-0.7*4)		1
26	2210090226	曲柄 Lever		1
27	90SP0206	彈簧銷 Spring Pin		1
28	2210090228	滑塊 Silde Block		1
29	66800	油線 Oil Wick		3
30	2210090230	連結銷 Connecting Rod		1
31	66800	油線 Oil Wick		1
32	2210090232	孔塞 Plug		1
33	66800	油線 Oil Wick		1
34	8MB03200506K	螺絲 Screw (CT0525 M3-0.5*5)		2
35	2210090235	導布屑 Chip Guard		1
36	8SC36401007D	螺絲 Screw (SH0125 9/64"-40*10)		1
37	22100902372	上刀 Upper Knife		1
38	8MN06400600A	螺絲 Screw (C0244 M6-1*6)		1
39	2210090239	上刀座 Upper Knife Holder		1
40	2210090240	定位銷 Knock Pin		1
41	2210090241	壓板 Lower Knife Clamp		1
42	2210090242	下刀 Lower Knife		1
43	2210090243	下刀座 Lower Knife Holder		1
44	8SB44401407A	螺絲 Screw (SH0112 11/64"-40*14)		1
45	2210090245	軸襯 Bushing		1
46	2210090246	下刀台 Lower Knife Holder Bracket		1
47	2210090247	止動片 Rotation Stopper		1
48	8MB04280807K	螺絲 Screw (CT0215 M4-0.7*8)		2
49	8MM06402010A	螺絲 Screw (SH0444 M6-1*20)		2
50	2210090250	軸 Shaft		1
51	8SN44400400A	螺絲 Screw (SH0104 11/64"-40*40)		2
52	2210000534	定位環 Collar		2
53	2210090253	彈簧 Spring		1
54	8MN03200300A	螺絲 Screw (C0115 M3-0.5*3)		4
55	2210090255	油封 Gasket		1
56	2210390256	曲柄 Lever		1
57	2210600135	變距偏心輪 Regulating Eccentric (FT600135)		1
58	2210600136	進給偏心輪 Eccentric(FT600136)		1
59	221A0090256	連桿組 Connecting Rod Asm.		1
60	221A0090257	曲柄組 Lever Asm.		1
61	221A0000563	定位環組 Collar Asm.		2

3.車頭承載及導布屑裝置列表 Supporting Board And Chute Components

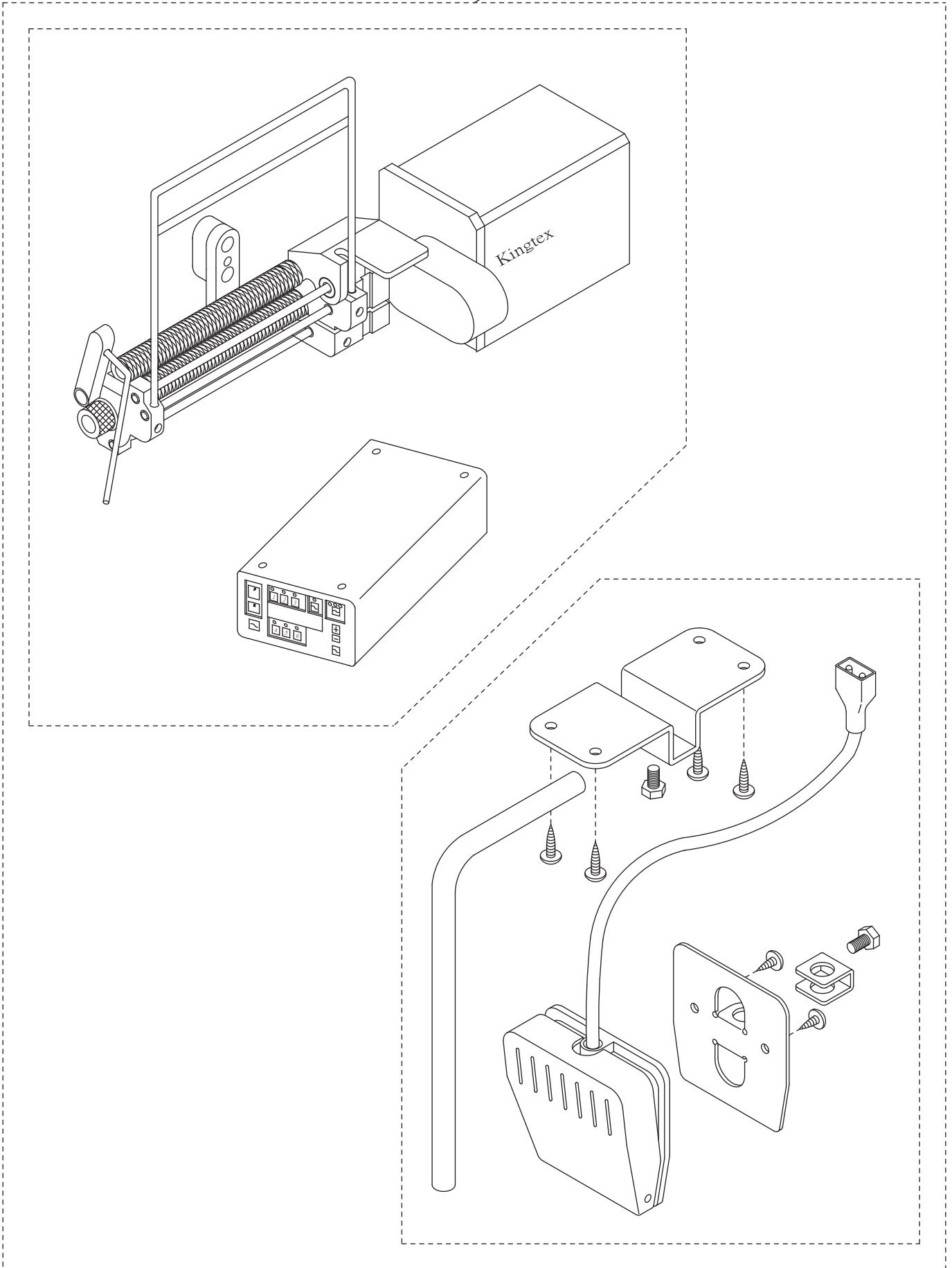


3.車頭承載及導布屑裝置列表 Supporting Board And Chute Components

序號	物料編號	名稱	單位用量
Ref. No.	Parts Number	Description	Amt.Req.
1	2200001501	皮帶蓋 Belt Cover -----	1
2	8MB06404609K	螺絲 Screw (CT1502 M6-1*46)-----	2
3	66945	減震橡膠 Rubber Cushion -----	4
4	8SA79180613A	螺帽 Nut (CT1514 5/16"-18*6)-----	17
5	2210001505	隔環 Spacer -----	12
6	2200001513	橡膠墊圈 Rubber Washer -----	4
7	2210001507	車頭承板 Supporting Board -----	2
8	8MB06401512M	螺椿 Bolt (FT1508 M6-1*10)-----	4
9	8SC79189627B	懸吊螺椿 Bolt (CT1509 5/16"-18*63)-----	4
10	2200001510	墊圈 Washer -----	15
11	2200001511	橡膠環 Rubber Washer -----	4
12	2210090612	承板 Chute Support -----	1
13	2210090613	螺絲 Screw -----	1
14	2210090614	木螺釘 Wood Screw -----	7
15	2210090615	上導布屑 Chute (Upper) -----	1
16	2210090616	下導布屑 Chute (Lower) -----	1
17	2210090617	導布屑 Chute -----	1
18	221A0090618	布漏組 Chute Asm. -----	1

4. 多功能電腦式送鬆緊帶MULTI-FUNCTION COMPUTERIZED FEEDING DEVICE

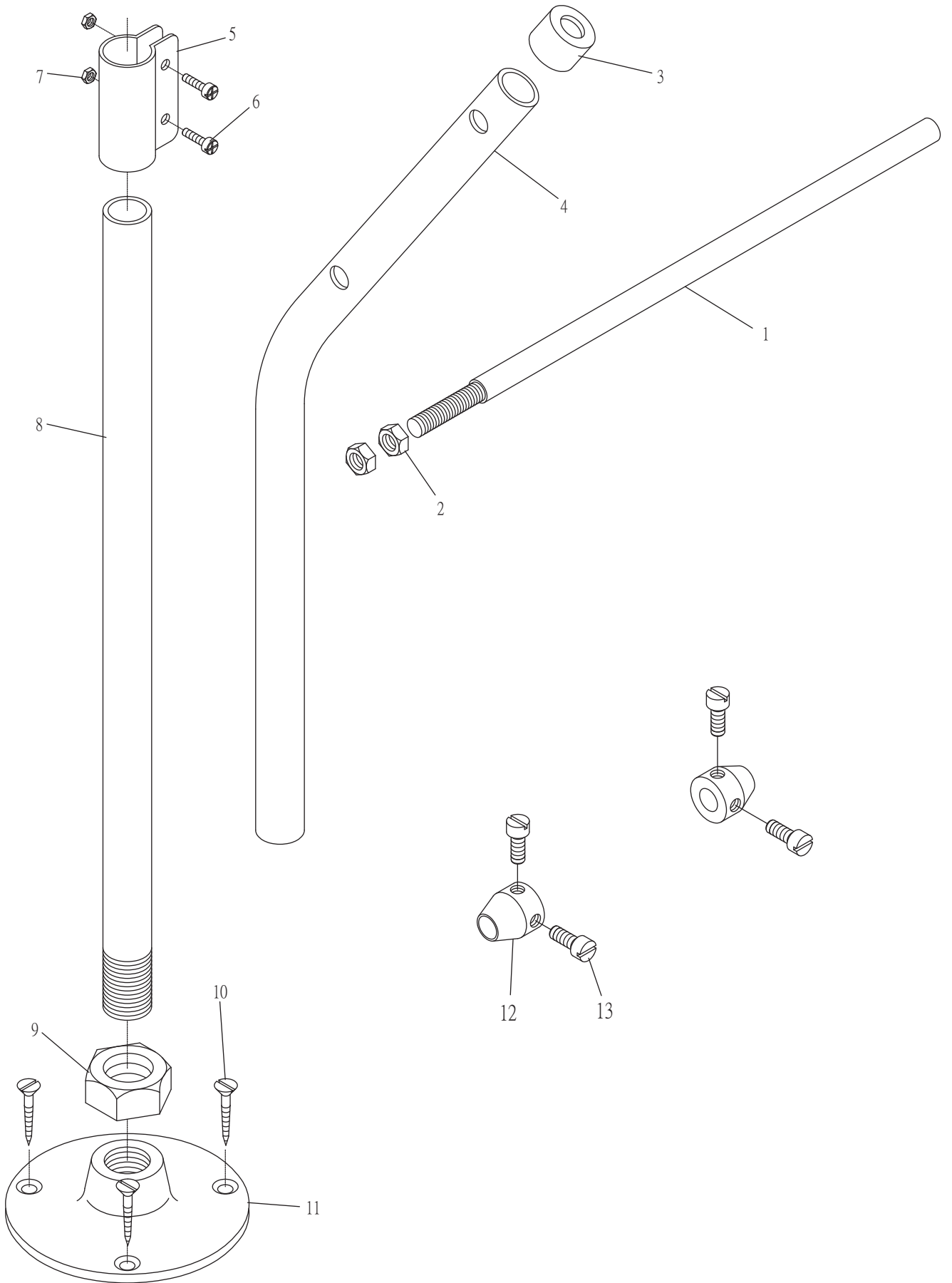
1



4. 多功能電腦式送鬆緊帶MULTI-FUNCTION COMPUTERIZED FEEDING DEVICE

序號	物料編號	名稱	單位用量
Ref. No.	Parts Number	Description	Amt.Req.
1	221A0290401	多功能電腦式送鬆緊帶 (MC S6C-57) -----	1

5. Ts03滾條架



5. TS03滾條架

序號	物料編號	名稱	單位用量
Ref. No.	Parts Number	Description	Amt.Req.
1	4TS0030101	軸 Shaft -----	1
2	8SA79180613A	螺絲 Screw (CT1514 5/16"-18*6) -----	2
3	4TS0060103	柱帽 Rod Cup -----	1
4	4TS0060104	上柱 Upper Thread Stand Rod -----	1
5	4TS0060105	接頭 Bracket -----	1
6	8SC48321708D	螺絲 Screw -----	2
7	8SA48320409B	螺帽 Nut (SH0527 3/16"-32*4)-----	2
8	4TS0060108	下柱 Lower Thread Stand Rod -----	1
9	4TS0060109	螺帽 Nut -----	1
10	8WF50202210A	木螺絲 Wood Screw -----	3
11	4TS0060111	座 Stand Base -----	1
12	4TS0030112	限動環 Stop Collar -----	2
13	8SH56320500A	螺絲 Screw -----	4