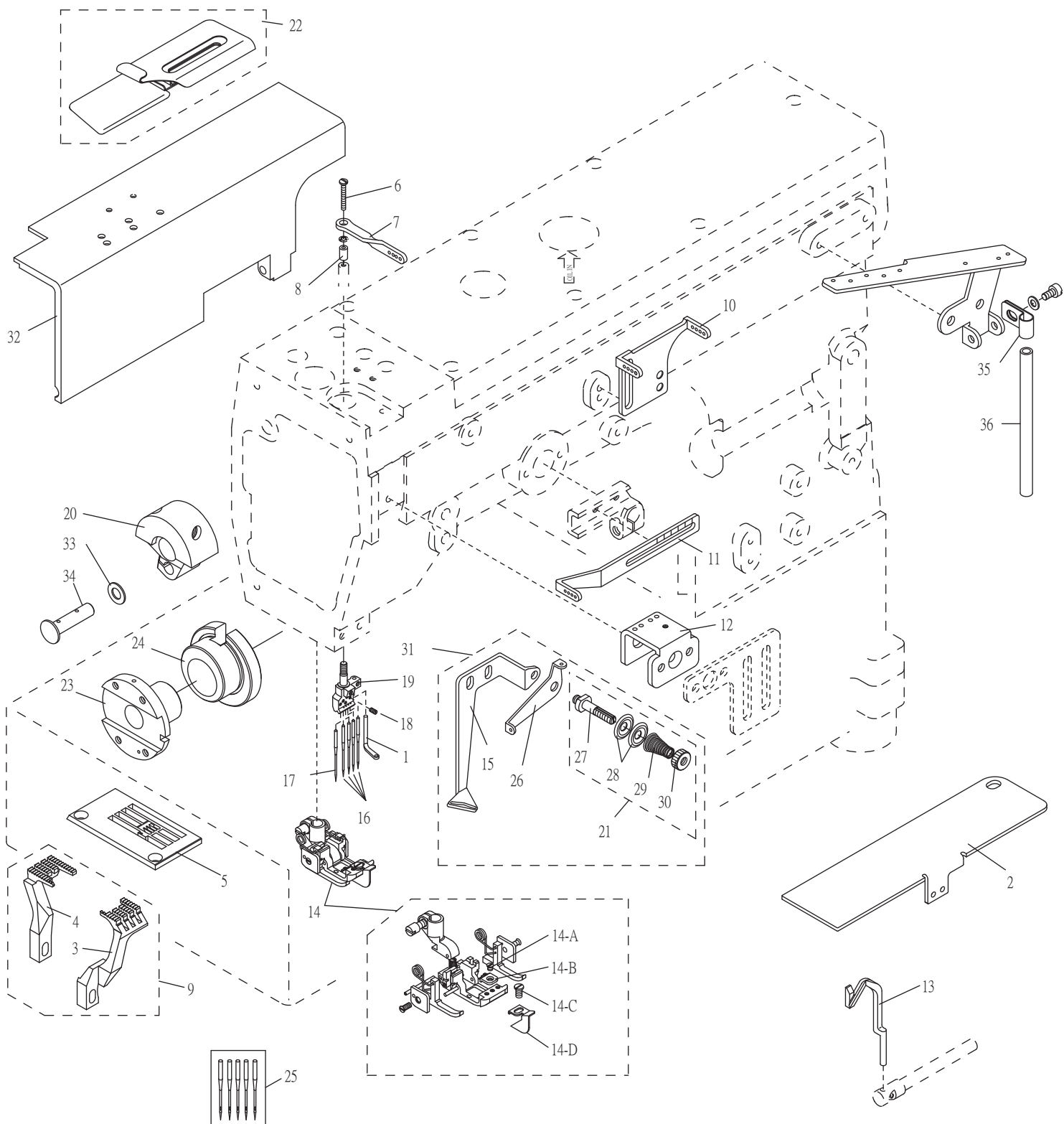


1. FT6760平型四針用零件列表Parts List For Ft6760 Flatseaming



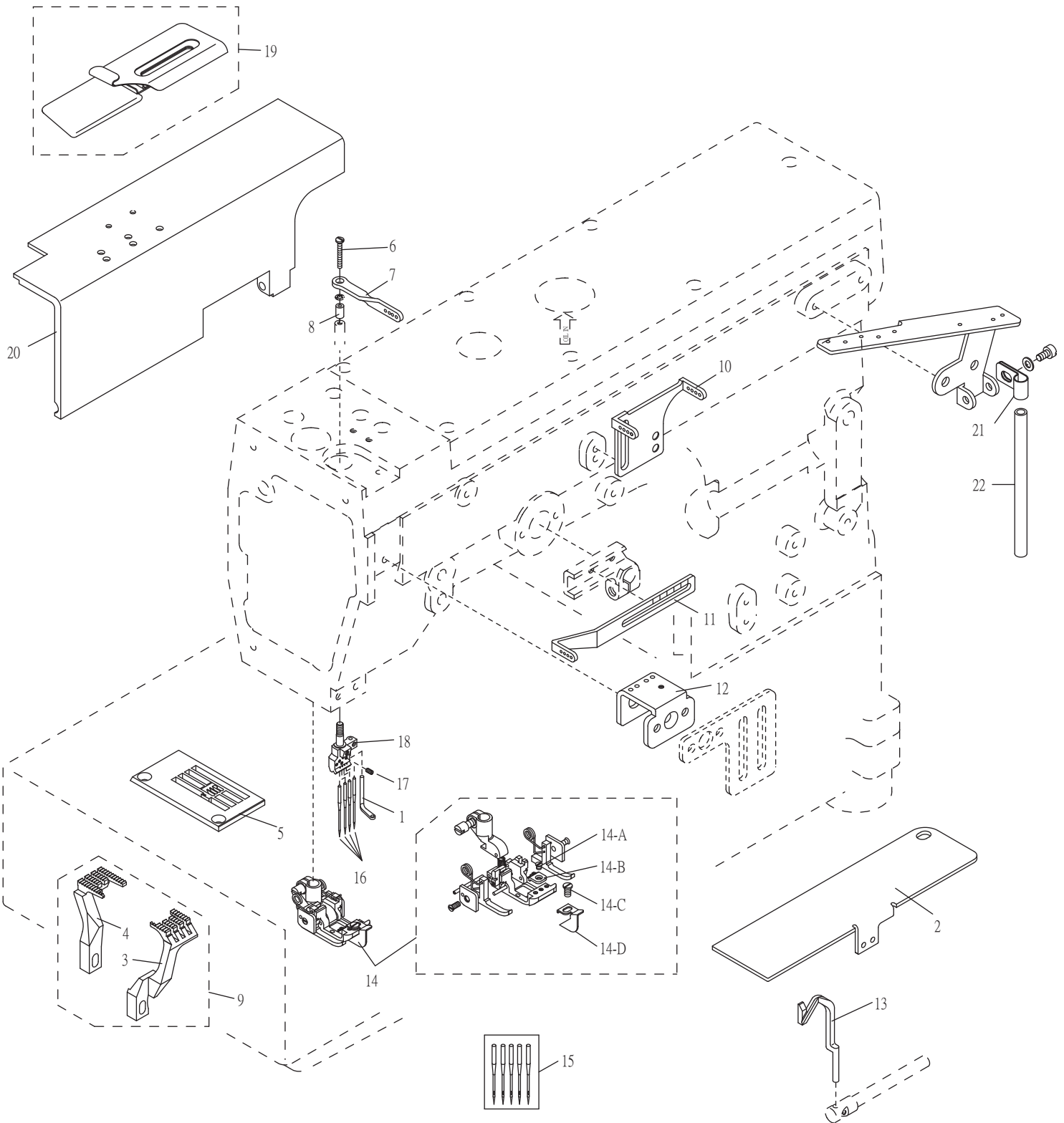
序號 Ref.No.	名稱 Description	針距 Distance Of Needles			
		5.2	5.6	6.0	6.4
5	針板 Needle Plate	5221TP60520	5221TP60560	5221TP60600	5221TP60640
14	壓腳 Presser Foot	5221PF60520	5221PF60560	5221PF60600	5221PF60640
14-B	壓腳舌 Presser Foot Tongue	5221PF6052A	5221PF6056A	5221PF6060A	5221PF6064A
19	針留 Needle Clamp	5221NC60520	5221NC60560	5221NC60600	5221NC60640

1. FT6760平型四針用零件列表Parts List For Ft6760 Flatseaming

序號	物料編號	名稱	單位用量
Ref. No.	Parts Number	Description	Amt.Req.
1	2200000710	導線 Thread Guide -----	1
2	22100002041	護線蓋 Cloth Plate -----	1
3	5221DF60560	副送布齒 Diff Feed Dog(See Left Page) -----	1
4	5221FD60560	主送布齒 Main Feed Dog(See Left Page) -----	1
5	-----	針板 Needle Plate(See Left Page) -----	1
6	8MB85241306K	螺絲 Screw (FT0519 M3.5-0.6-*13)-----	1
7	2210600118	導線 Thread Guide -----	1
8	2210600120	隔環 Spacer -----	1
9	5221DG0013	送布齒組 Main Feed Dog Asm.-----	1
10	2210600122	導線 Thread Guide -----	1
11	2210600123	針棒揚線桿 Needle Thread Take-Up -----	1
12	2210600124	導線 Thread Guide -----	1
13	5221NG60560	後導針器 Needle Guard (Rear) -----	1
14	-----	壓腳組 Press Foot Set(See Left Page) -----	1
14-A	5221PF6056C	螺絲 Screw -----	1
14-B	-----	壓腳舌 Press Foot Tongue(See Left Page) -----	1
14-C	8SB24560405A	螺絲 Screw (SH0413 3/32"-56*4) -----	1
14-D	5221PF6056F	導布定規 Presser Foot Guide -----	1
15	2210600127	導線 Thread Guide -----	1
16	66728-10-5	針 Needle (UY118GAS #10) (五支裝)-----	1
17	66728-1	假針 Needle -----	1
18	8SC24560303B	螺絲 Screw (F600130 3/32"-56*3)-----	5
19	-----	針留 Needle Clamp (See Left Page) -----	1
20	2210600132	平衡錘 Balance Weight -----	1
21	227A0000342	張力控制組 Thread Retainer Asm. -----	1
*22	221FR0101	導模 Folder Unit (Two-fold) (Extra) -----	1
23	2210600135	變距偏心輪 Regulating Eccentric -----	1
24	2210600136	進給偏心輪 Eccentric -----	1
25	66728-10-5	備用針 Spare Needle -----	1
26	2200000353	導線 Thread Guide (CT0353) -----	1
27	2200000354	螺樁 Stud (CT0354) -----	1
28	2200000355	張力控制盤 Tension Disc (CT0355) -----	2
29	2200000356	彈簧 Spring (CT0356) -----	1
30	2200000357	螺帽 Nut (CT0357) -----	1
31	221A0600143	導線組 Thread Guide Asm.-----	1
32	2210000257	下座前蓋 Front Cover -----	1
33	2200000716	墊圈 Washer (CT0716) -----	1
34	2210000724	曲柄銷 Rod Pin -----	1
35	2100051110	導線管夾 Thread Guide Pipe Clamp -----	1
36	2200000327	導線管 Thread Guide Pipe -----	1

* 特註品Custom-made Item

2. FT6760-1平型四針用零件列表Parts List For FT6760-1 Flatseaming



序號 Ref.No.	名稱 Description	針距 Distance Of Needles			
		5.2	5.6	6.0	6.4
5	針板 Needle Plate	5221TP60520	5221TP60560	5221TP60600	5221TP60640
14	壓腳 Presser Foot	5221PF60520	5221PF60560	5221PF60600	5221PF60640
24-B	壓腳舌 Presser Foot Tongue	5221PF6052A	5221PF6056A	5221PF6060A	5221PF6064A
18	針留 Needle Clamp	5221NC60520	5221NC60560	5221NC60600	5221NC60640

2. FT6760-1平型四針用零件列表Parts List For FT6760-1 Flatseaming

序號	物料編號	名稱	單位用量
Ref. No.	Parts Number	Description	Amt.Req.
1	2200000710	導線 Thread Guide -----	1
2	22100002041	護線蓋 Cloth Plate -----	1
3	5221DF60560	副送布齒 Diff Feed Dog(See Left Page) -----	1
4	5221FD60560	主送布齒 Main Feed Dog(See Left Page) -----	1
5	-----	針板 Needle Plate(See Left Page) -----	1
6	8MB85241306K	螺絲 Screw (FT0519 M3.5-0.6-*13)-----	1
7	2210600118	導線 Thread Guide -----	1
8	2210600120	隔環 Spacer -----	1
9	5221DG0013	送布齒組 Main Feed Dog Asm.-----	1
10	2210600122	導線 Thread Guide -----	1
11	2210600123	針棒揚線桿 Needle Thread Take-Up -----	1
12	2210600124	導線 Thread Guide -----	1
13	5221NG60560	後導針器 Needle Guard (Rear) -----	1
14	-----	壓腳組 Press Foot Set(See Left Page) -----	1
14-A	5221PF6056C	螺絲 Screw -----	1
14-B	-----	壓腳舌 Press Foot Tongue(See Left Page) -----	1
14-C	8SB24560405A	螺絲 Screw (SH0413 3/32"-56*4) -----	1
14-D	5221PF6056F	導布定規 Presser Foot Guide -----	1
15	66734-11-5	備用針 Spare Needle (5支裝)-----	1
16	66734-11-5	針 Needle (SCHMETZ Canu:34:22 1 NM: 75 #11) -----	1
17	8SC24560303B	螺絲 Screw (F600130 3/32"-56*3)-----	5
18	-----	針留 Needle Clamp (See Left Page) -----	1
*19	221FR0101	導模 Folder Unit (Two-fold) (Extra) -----	1
20	2210000257	下座前蓋 Front Cover -----	1
21	2100051110	導線管夾 Thread Guide Pipe Clamp -----	1
22	2200000327	導線管 Thread Guide Pipe -----	1

* 特註品Custom-made Item