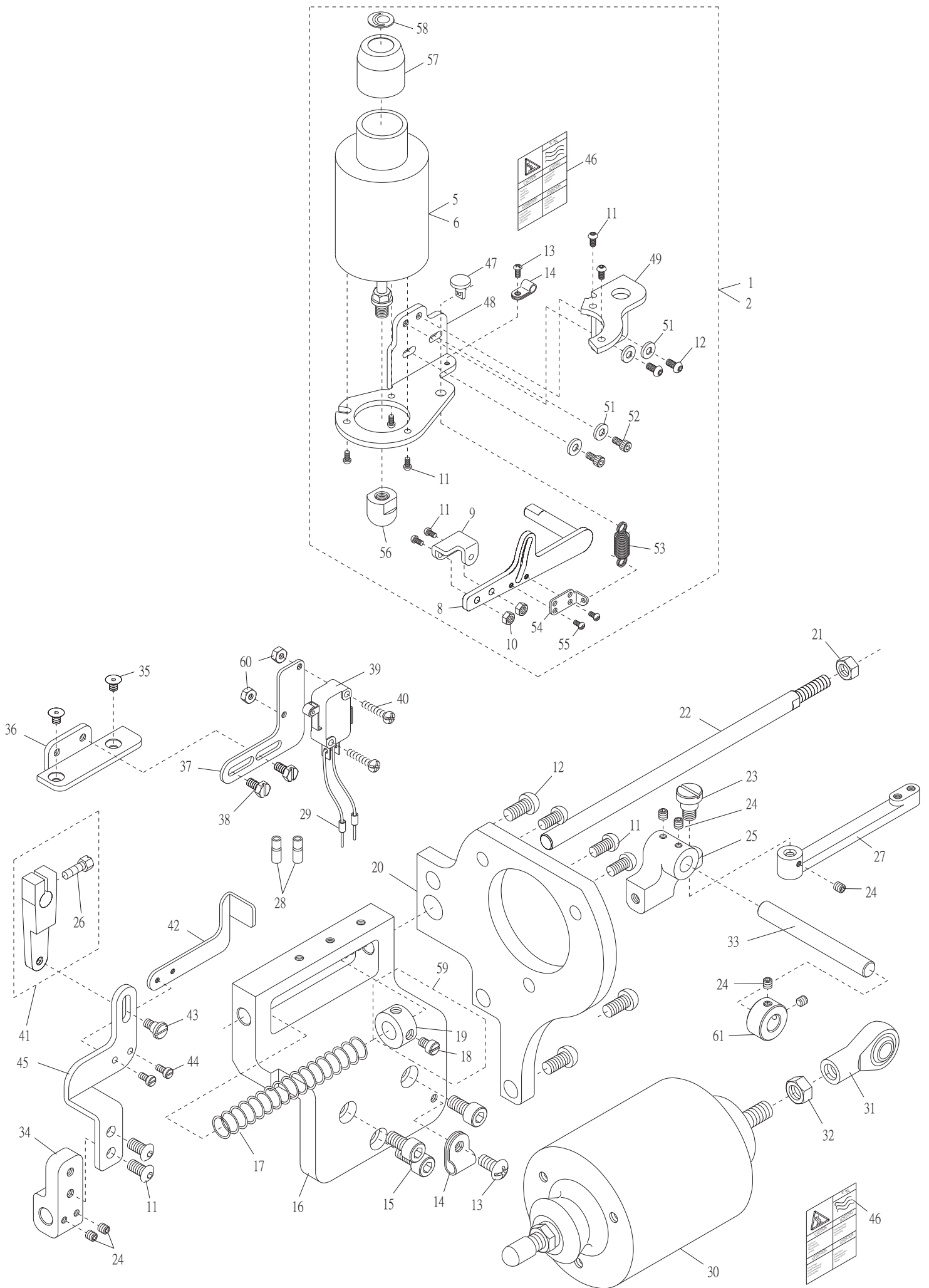


# 4. UTE 電控式組件 UTE Electric Type Components



#### 4. UTE 電控式組件 UTE Electric Type Components

序號 Ref. No.	物料編號 Parts Number	名稱 Description	單位用量 Amt. Req.
1	PFE01	壓腳提昇組 Presser Foot Lifter, C. Set	1
*2	PFE01	壓腳提昇組 Presser Foot Lifter, C. Set	1
3	-----	-----	-
4	-----	-----	-
5	4PFE010101	磁力線圈 Presser Foot Lifter Solenoid	1
*6	4PFE1P0121	磁力線圈 Presser Foot Lifter Solenoid	1
7	-----	-----	-
8	4UTC000108	揚昇臂 Lifter Arm	1
9	4UTC000109	輔助板 Supplementary Plate	1
10	8MA05320408A	螺帽 Nut (CT1028 M5-0.8*4)	2
11	8MP05321210A	螺絲 Screw (UTB0340 M6-1*11.5)	12
12	8MP06401211A	螺絲 Screw (UTB0302 M6-1*12)	5
13	8MC04280807D	螺絲 Screw (CT0130 M4-0.7*8)	2
14	4UTD000254	線夾 Cord Clamp	2
15	8MM06401210A	螺絲 Screw (FT1103 M6-1*12)	3
16	4UTD000252	空壓組件座 Trimming Cylinder Support	1
17	4UTC000112	彈簧 Spring	1
18	8MC95300606F	螺絲 Screw (CT0823 M4.5-0.75*5)	1
19	4UTB010245	定位環 Collar	1
20	4UTE0001201	磁力線圈座 Solenoid Barcket	1
21	8MA08500513A	螺帽 Nut (FTC10126 M8-1.25*5)	1
22	4UTD000222	軸 Shaft	1
23	4UTD000223	螺樁 Stud	1
24	8MN04280400A	螺絲 Screw (CT0229 M4-0.7*4)	7
25	4UTE000125	承座 Plunger	1
26	8MK95301407A	螺絲 Screw (CT0837 M4.5-0.75*14)	1
27	4UTD0002271	連結桿 Connecting Rod	1
28	4UTB020228	絕緣套管 Bushing	2
29	4UTB020272	公端子 Power cord	2
30	4UTC0001301	磁力線圈 Solenoid	1
31	4UTB010326	球軸連桿 Plunger Connecting Rod	1
32	8MA08500613A	螺帽 Nut (RP10208 M8-1.25*6)	1
33	4UTC0001251	軸 Shaft	1
34	4UTD000247	連結塊 Connecting Block	1
35	8MQ04280808A	螺絲 Screw (UTB0109 M4-0.7*4)	2
36	4UTC000132	基板 Base	1
37	4UTD000237	安全開關座 safety Switch Bracket	1
38	8MK04280507A	螺絲 Screw (WPC0106 M4-0.7*5)	2
39	4UTB000336	安全開關 Safety Switch	1
40	8MC03201606D	螺絲 Screw (UTB03351 M3-0.5*16)	2
41	4UTB010337	曲柄 Tension Release Lever	1
42	4UTD000242	擋片 Stopper	1
43	8MB04280908G	螺樁 Stud (UTB0339 M4-0.7*8)	1
44	8MB03200506K	螺絲 Screw (CT0525 M3-0.5*5)	2
45	4UTD020245	連桿 Connecting Plate	1
46	4UTC000139	貼紙 Paster	3
47	4PFE010102	接頭 Joint	1
48	4PFE0101031	磁力線圈固定座 Bracker	1
49	4PFE010104	固定座 Bracker	1
50	-----	-----	-
51	2100000323	墊圈 Washer (SH0323)	4
52	8MM06401610A	螺絲 Screw (CT0625 M6-1*16)	2
53	4PFE010106	彈簧 Spring	1
54	4PFE010108	彈簧固定座 Bracket	1
55	8MB85240607K	螺絲 Screw (CT0637 M3.5-0.6*6)	2
56	4PFE010113	套管 Clutch Sleeve	1
57	4PFE010119	護蓋 Cover	1
58	66480-11	銘板 Plate	1
59	4UTB01A0255	定位環組 Collar Asm.	1
60	8MA03200306A	螺絲 Screw (FTB0111 M3-0.5*3)	2
61	4UTB010152	定位環 Collar	1

\* 配合RP使用