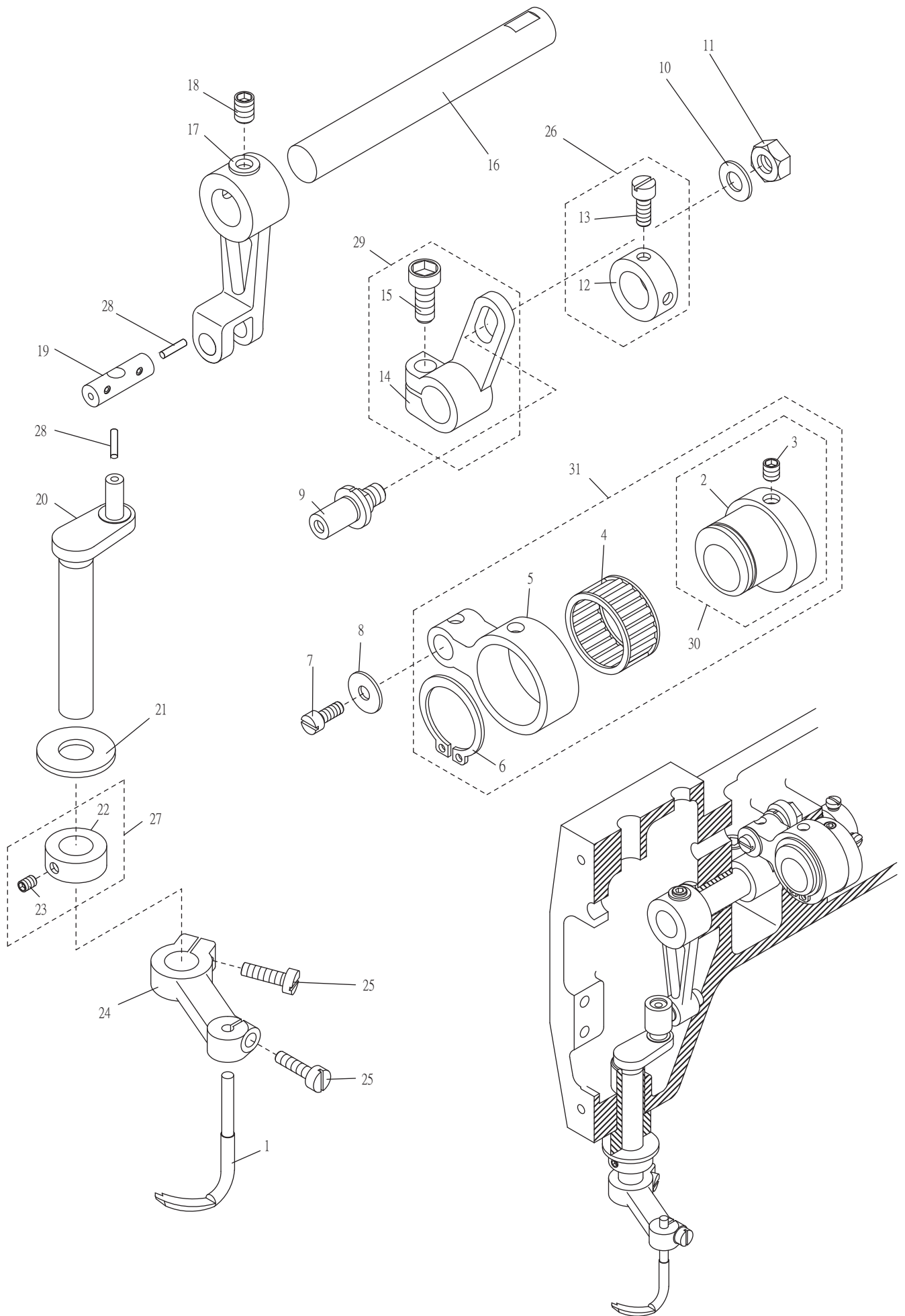


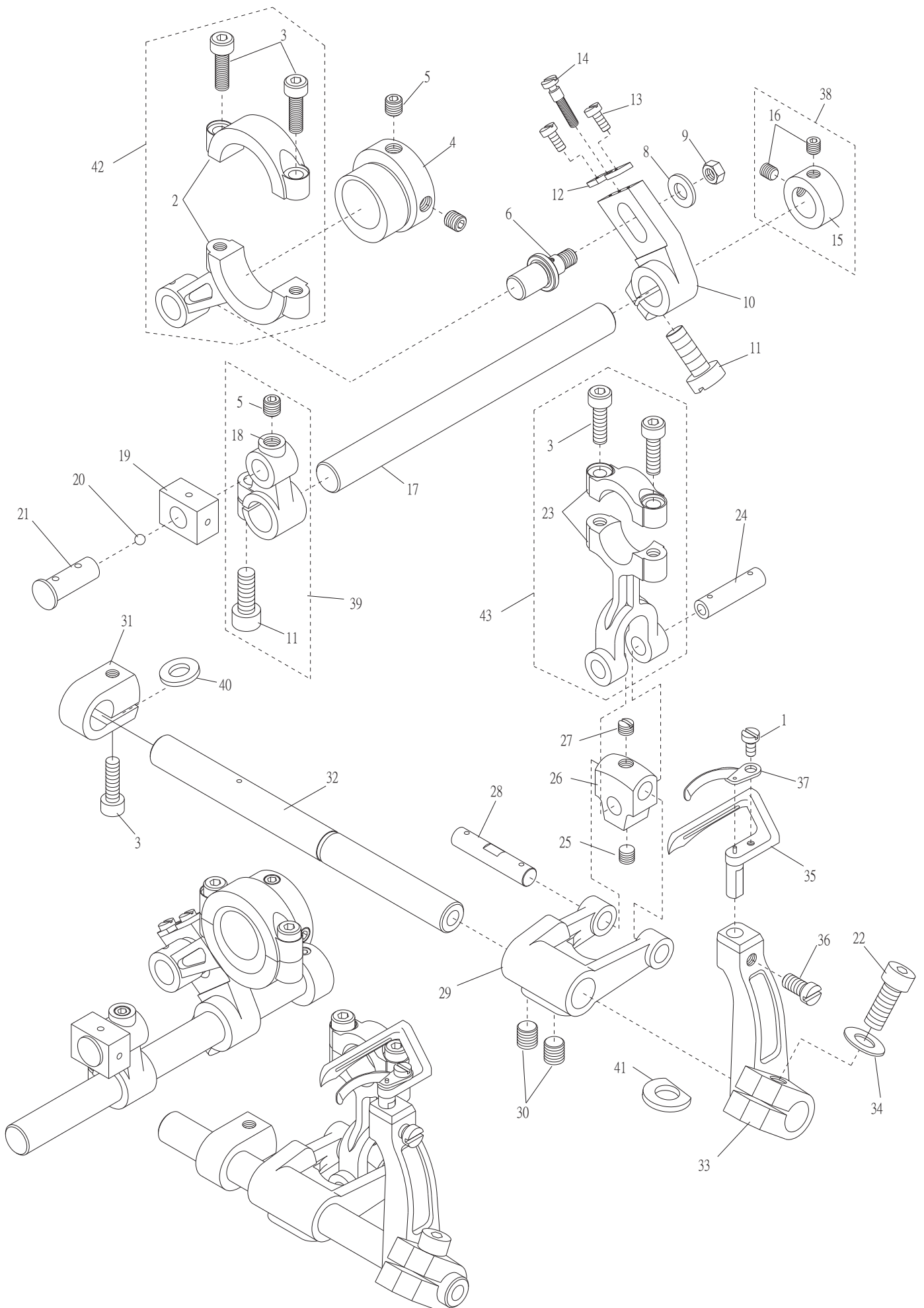
9. FT7000 / FTD7000 裝飾線驅動機構 Spreader Mechanism For FT7000 / FTD7000



9. FT7000 / FTD7000 裝飾線驅動機構 Spreader Mechanism For FT7000 / FTD7000

序號	物料編號	名稱	單位用量
Ref. No.	Parts Number	Description	Amt.Rdq.
1	5221SL00560	裝飾線結線鉤 Spreader -----	1
2	2200000902	偏心輪 Eccentric -----	2
3	8MN05320500E	螺絲 Screw (CT0903 M5-0.8*5) -----	1
4	90NB222613	滾針軸承 Needle Bearing -----	1
5	2200000905	連桿 Connecting Rod -----	1
6	90SCR220	軸用 C形扣環C Ring -----	1
7	8MB04280807K	螺絲 Screw (CT0215 M4-0.7*8) -----	1
8	2200000908	墊圈 Washer -----	1
9	2200000909	曲柄銷 Rod Pin -----	1
10	2200000910	墊圈 Washer -----	1
11	8MA06400510A	螺帽 Nut (CT0533 M6-1*5) -----	1
12	2200000912	定位環 Collar -----	2
13	8MC95300606F	螺絲 Screw (CT0823 M4.5-0.75*5.5) -----	1
14	2200000914	變距曲柄 Lever -----	1
15	8MM06401610A	螺絲 Screw (CT0625 M6-1*16) -----	1
16	2200000916	軸 Shaft -----	1
17	2220000917	連桿 Connecting Rod -----	2
18	8MN06400600A	螺絲 Screw (CT0244 M6-1*6) -----	1
19	2220000919	連桿銷 Rod Pin -----	1
20	2220000920	曲軸 Crank Shaft -----	1
21	2200000921	墊圈 Washer -----	1
22	2200000922	定位環 Collar -----	2
23	8MH85240500A	螺絲 Screw (CT0923 M3.5-0.6*4.5) -----	1
24	22000009241	擺動臂 Spreader Arm -----	2
25	8MB04281207K	螺絲 Screw (CT0239 M4-0.7*12) -----	1
26	220A0000926	定位環組 Collar Asm -----	1
27	220A0000927	定位環組 Collar Asm -----	2
28	66801	油線 Oil Wick -----	1
29	222A0000929	變距曲柄 Lever -----	1
30	222A0000930	偏心輪組 Collar Asm -----	1
31	222A0000931	偏心輪組 Collar Asm -----	1

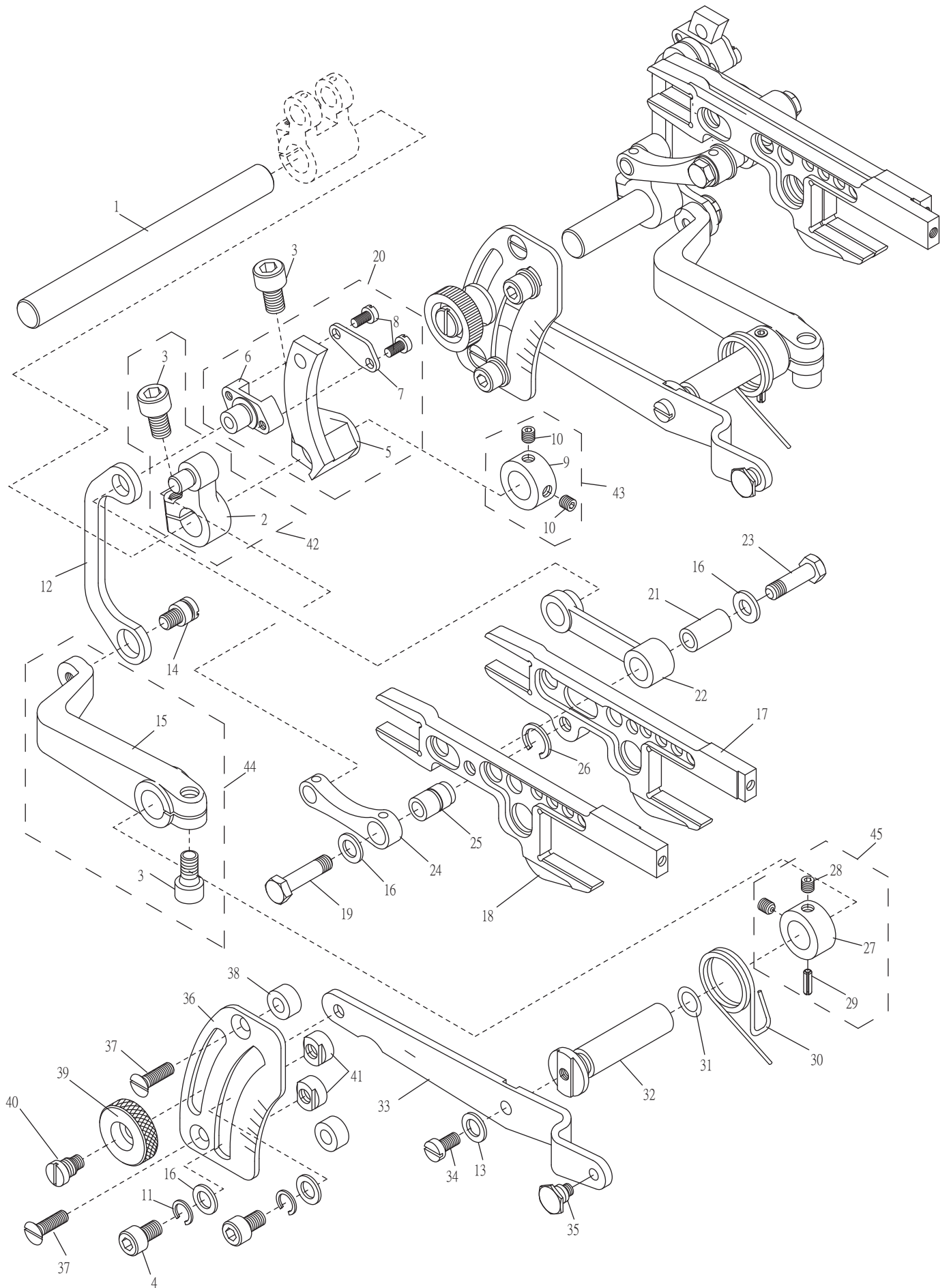
10. FT7000 / FTD7000 結線鉤驅動機構 Looper Driving Mechanism For FT7000 / FTD7000



10. FT7000/FTD7000 結線鉤驅動機構 Looper Driving Mechanism For FT7000/FTD7000

序號	物料編號	名稱	單位用量
Ref. No.	Parts Number	Description	Amt. Req.
1	8SB24560404A	螺絲 Screw (F1001) -----	1
2	2210001002	連桿 Connecting Rod -----	1
3	8MM04281407A	螺絲 Screw (FT1003 M4-0.7*14) -----	5
4	2210001004	偏心輪 Eccentric -----	1
5	8MN05320500E	螺絲 Screw (CT0903 M5-0.8*5) -----	3
6	2210001006	曲柄銷 Lever Pin -----	1
7	-----	-----	-
8	2200001025	墊圈 Washer (CT1025)-----	1
9	8MA05320408A	螺帽 Nut (CT1028 M5-0.8*4) -----	1
10	2210001010	變距曲柄 Adjusting Lever -----	1
11	8MM05321209A	螺絲 Screw (FT0524 ) -----	2
12	2210001012	卡榫 Adjusting Guide Plate -----	1
13	8MB75180505A	螺絲 Screw (CTS0218 M2.5-0.45*5) -----	2
14	2210001014	變距螺椿 Adjusting Stud -----	1
15	2210001015	定位環 Collar -----	1
16	8MN04280400A	螺絲 Screw (CT0229 M4-0.7*4) -----	2
17	2210001017	軸 Shaft -----	1
18	2210001018	曲柄 Lever -----	1
19	2210001019	驅動滑塊 Slide Block -----	1
20	2100000403	孔塞 Plug (SH0403) -----	1
21	2210001021	曲柄銷 Lever Pin -----	1
22	8MM05321609A	螺絲 Screw (RP101-11 M5-0.5*16) -----	1
23	2210001023	連桿 Rod -----	1
24	2210001024	連結銷 Connecting Pin -----	1
25	8MN95300600A	螺絲 Screw (FT1025 M 4.5-0.75*6) -----	1
26	2210001026	十字接頭 Lever Link -----	1
27	8MH95300400A	螺絲 Screw (FT1027 M4.5-0.75*3.5) -----	1
28	2210001028	連結銷 Connecting Pin -----	1
29	2210001029	曲柄 Lever -----	1
30	8MN06400600A	螺絲 Screw (CT0244 M6-1*6) -----	2
31	2210001031	止推夾環 Collar -----	1
32	2210001032	軸 Shaft -----	1
33	2210001033	擺動臂 Rocker Arm -----	1
34	2210001034	墊圈 Washer -----	1
35	5221LL00561	下結線鉤 Looper -----	1
36	8MB04280705K	螺絲 Screw (FT1036 M4-0.7*7) -----	1
37	5221NG00561	前導針器 Needle Guide (NGF00D1) -----	1
38	221A0001038	定位環組 Collar Asm. -----	1
39	221A0001039	曲柄組 Lever Asm.-----	1
40	2100000223	墊圈 Washer (W3)-----	1
41	2210001041	墊片 Washer -----	1
42	221A0001042	連桿組 Connecting Rod Asm -----	1
43	221A0001043	連桿組 Connecting Rod Asm -----	1

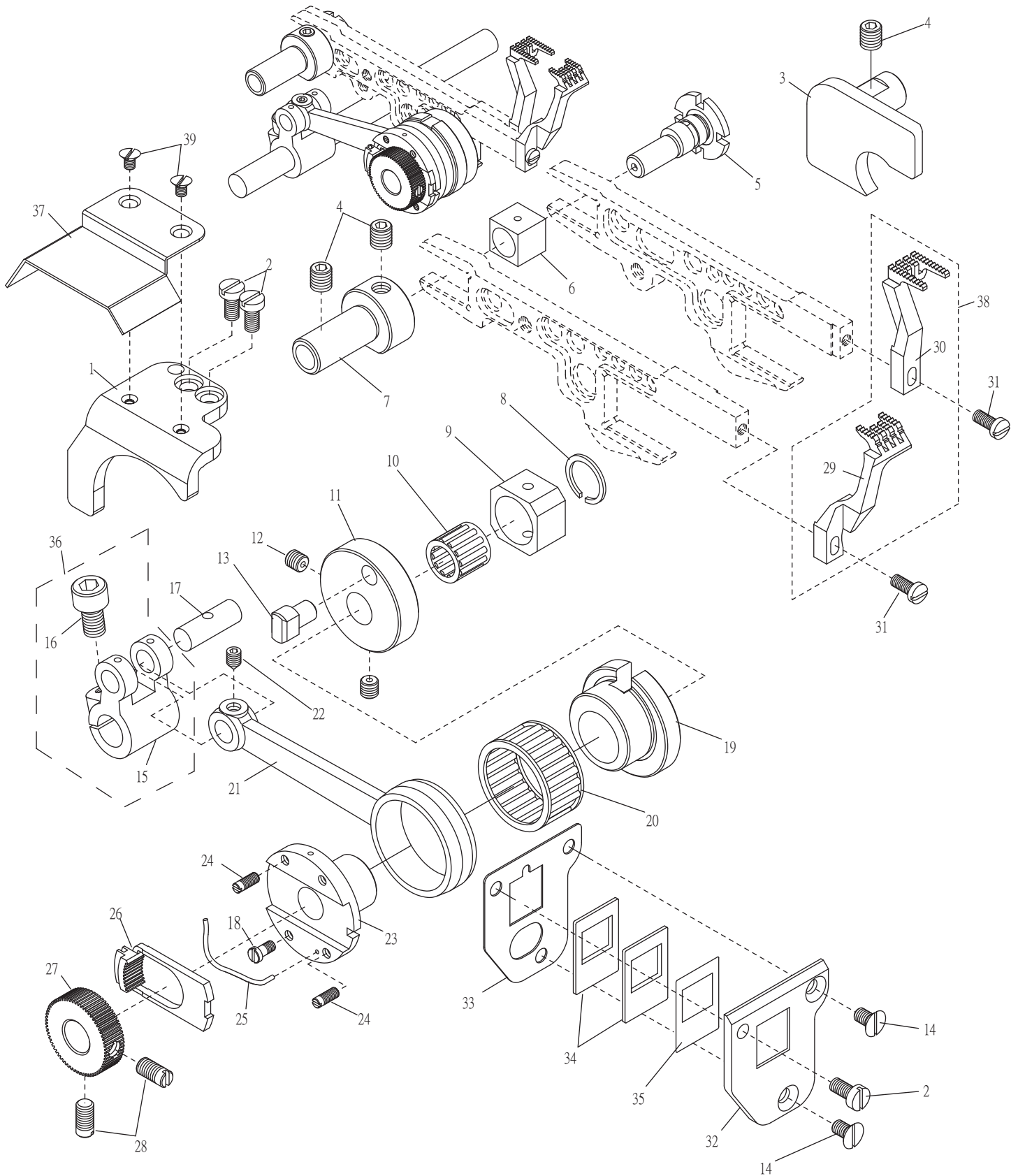
11.FT7000 / FTD7000 進給變換機構 Feed Control Driving For FT7000 / FTD7000



11.FT7000 / FTD7000 進給變換機構 Feed Control Driving For FT7000 / FTD7000

序號	物料編號	名稱	單位用量
Ref. No.	Parts Number	Description	Amt. Req.
1	2210001101	軸 Shaft -----	1
2	2210001102	曲柄 Lever -----	1
3	8MM06401210A	螺絲 Screw (FT1103 M6-1*12) -----	3
4	8MM05320809A	螺絲 Screw (CT1145 M5-0.8*8) -----	2
5	2210001105	差動變距滑道 Differential Rocker -----	1
6	2210001106	差動變距滑塊 Slide Block -----	1
7	2210001107	滑塊檔板 Slide Block Cap -----	1
8	8MB03200606K	螺絲 Screw (CT1207 M3-0.5*6) -----	2
9	2210001109	定位環 Collar -----	1
10	8MN05320500E	螺絲 Screw (CT0903 M5-0.8*5) -----	2
11	90SW050	彈簧墊圈 Spring Washer (CT0631) -----	2
12	2210001112	連桿 Link -----	1
13	2100000223	墊圈 Washer (W3)-----	1
14	2210001114	連結銷 Connecting Pin -----	1
15	2210001115	差動變換臂 Differential Lever -----	1
16	2200001025	墊圈 Washer (CT1025) -----	4
17	2210001117	主送齒驅動座 Feed Dog Seat -----	1
18	2210001118	副送齒驅動座 Feed Dog Seat -----	1
19	8MK05201808G	螺絲 Screw (FT1119 M5-0.5*18)-----	1
20	221A0001147	差動變距滑道組 Differential Rocker Asm. -----	1
21	2210001121	套管 Bushing -----	1
22	2210001122	連桿 Rod -----	1
23	8MK05202108G	螺絲 Screw (FT1123 M5-0.5*21) -----	1
24	2210001124	連桿 Rod -----	1
25	2210001125	套管 Bushing -----	1
26	2210001126	C形同心扣環 C Ring -----	1
27	2210001127	定位環 Collar -----	1
28	8MN04280400A	螺絲 Screw (CT0229 M4-0.7*4) -----	2
29	90SP0416	彈簧銷 Spring Pin (CT0820) -----	1
30	2210001130	回復彈簧 Spring -----	1
31	90OR070	O形油環 O Ring -----	1
32	2210001132	差動游標軸 Shaft -----	1
33	2210001133	差動變換桿 Lever -----	1
34	8MB04280807K	螺絲 Screw (CT0215 M4-0.7*8) -----	1
35	2210001135	懸掛螺樁 Stud -----	1
36	2210001136	差動刻記板 Regulator Plate -----	1
37	8ME04281408A	螺絲 Screw (CT1140 M4-0.7*14) -----	2
38	2200001141	隔環 Spacer (CT1141) -----	2
39	2200001147	螺帽 Nut -----	1
40	8MB06401108T	螺樁 Stud (FT71140 M6-1*11) -----	1
41	2200001142	止動環 Stopper (CT1142) -----	2
42	221A0001142	曲柄組 Lever Asm. (F1102A) -----	1
43	221A0001143	定位環組 Collar Asm. (F1109A) -----	1
44	221A0001144	差動變換臂組 Differential Lever Asm.(F1115A )-----	1
45	221A0001145	定位環組 Collar Asm. (F1127A)-----	1

12. FT7000 / FTD7000 導針與送布齒驅動機構  
 Needle Guide And Feed Dog Driving For FT7000 / FTD7000



序號 Ref.No.	名稱 Description	針距 Distance Of Needles			
		4.0	4.8	5.6	6.4
30	主送布齒 Main Feed Dog	5221FD00564	5221FD00564	5221FD00564	5221FD00644
29	副送布齒 Diff Feed Dog	5221DF00563	5221DF00563	5221DF00563	5221DF00643
38	送布齒組 Feed Dog Asm.	5221DG0021	5221DG0021	5221DG0021	5221DG0022

## 12. FT7000 / FTD7000 導針與送布齒驅動機構

### Needle Guide And Feed Dog Driving For FT7000 / FTD7000

序號	物料編號	名稱	單位用量
Ref. No.	Parts Number	Description	Amt.Req.
1	22100012011	送布齒座導軌 Feed Bar Guide -----	1
2	8MB04280807K	螺絲Screw (CT0215 M4-0.7*8) -----	3
3	2210001203	送布齒座導軌 Feed Bar Guide -----	1
4	8MN06400600A	螺絲Screw (CT0244 M6-1*6) -----	3
5	2210001205	送布齒台調整軸 Feed Adjusting Shaft-----	1
6	2200001245	滑塊 Slide Block (CT1245) -----	1
7	2210001207	懸臂 Guide -----	1
8	2210001208	C型同心扣環 C Riing -----	1
9	2210001209	滑塊 Slide Block -----	1
10	90NB121510	滾針軸承 Needle Bearing -----	1
11	2210001211	變距銷座 Eccentric Pin Holder -----	1
12	8MN05320500E	螺絲 Screw (CT0903 M5-0.8*5)-----	2
13	2210001213	變距銷 Eccentric Pin -----	1
14	8ME04280708A	螺絲 Screw (CT0206 M4-0.7*5) -----	2
15	2210001215	曲柄 Shaft -----	1
16	8MM06401210A	螺絲 Screw (FT1103 M6-1*12) -----	1
17	2210001217	曲柄銷 Shaft Pin -----	1
18	8MB03200605B	螺絲 Screw (FT1218 M3-0.5*6) -----	1
19	2210001219	進給偏心輪 Eccentric -----	1
20	90NB242810	滾針軸承 Needle Bearing -----	1
21	2210001221	連桿 Rod -----	1
22	8MN04280500C	螺絲 Screw (FT1222 M4-0.7*5) -----	1
23	2210001223	變距偏心輪 Regulating Eccentric -----	1
24	8MB03200403F	螺絲 Screw (FT1224 M3-0.8*8) -----	2
25	2210001225	彈簧 Spring -----	1
26	2210001226	離合齒片 Regulating Plate -----	1
27	2210001227	離合齒輪 Regulating Gear -----	1
28	8MB05320805F	螺絲 Screw (FT1228 M5-0.8*8) -----	2
29	-----	副送布齒 Diff. Feed Dog (See Left Page) -----	1
30	-----	主送布齒 Main Feed Dog (See Left Page) -----	1
31	8MB85240807K	螺絲 Screw (FT0555 M3.5-0.6*8) -----	2
32	2210001232	滑動油封座 Rubber Case -----	1
33	2210001233	輔助油封座 Gasket -----	1
34	2210001234	從動式油封 Rubber -----	2
35	2210001235	墊片 Washer -----	1
36	221A0001236	曲柄組 Crank Asm. (F1215A)-----	1
37	2210001237	防油蓋 Cover -----	1
38	-----	送布齒組 Feed Dog Asm.(See Left Page) -----	1
39	8ME03200506A	螺絲 Screw (CT0341 M3-0.5*4.5) -----	2