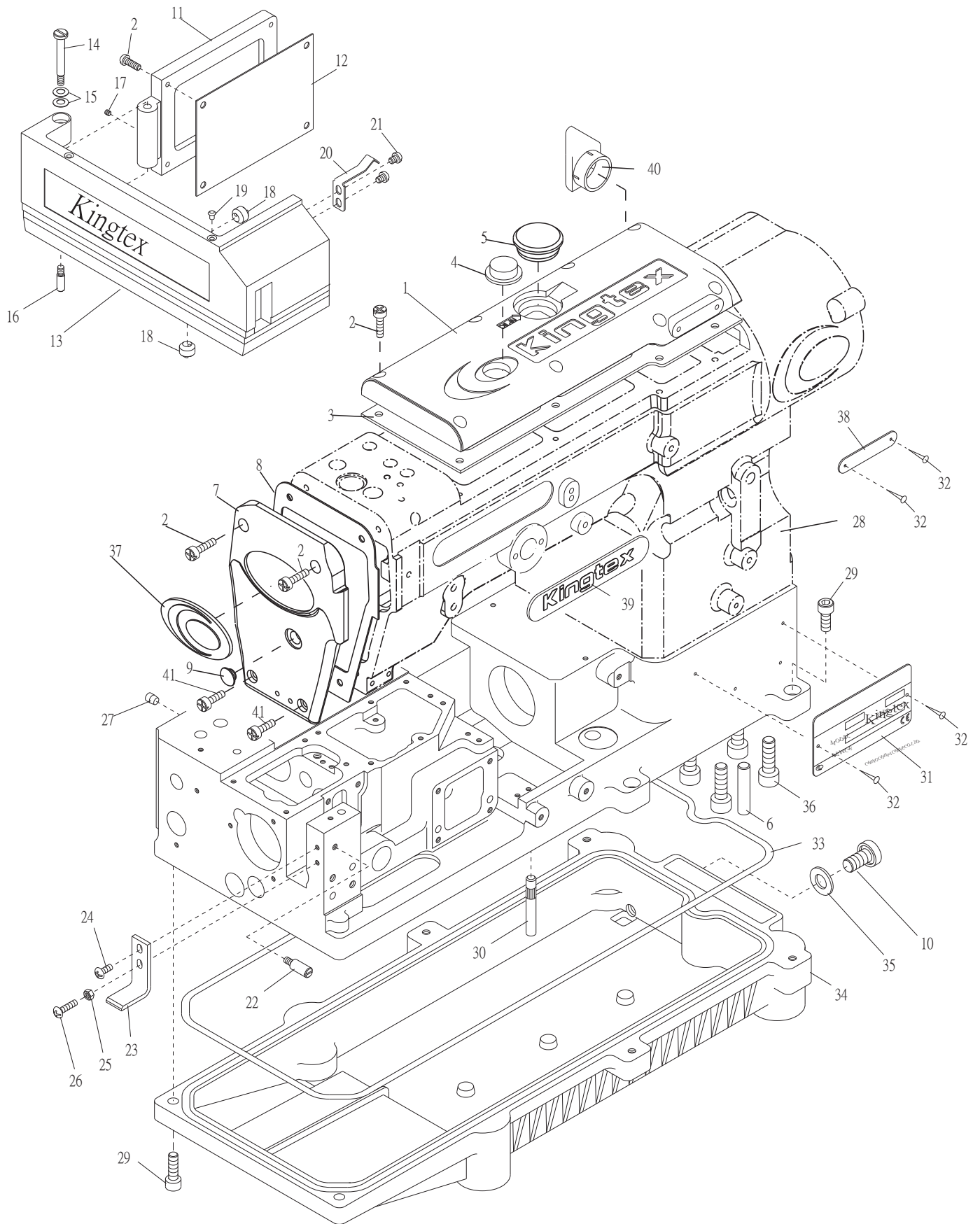


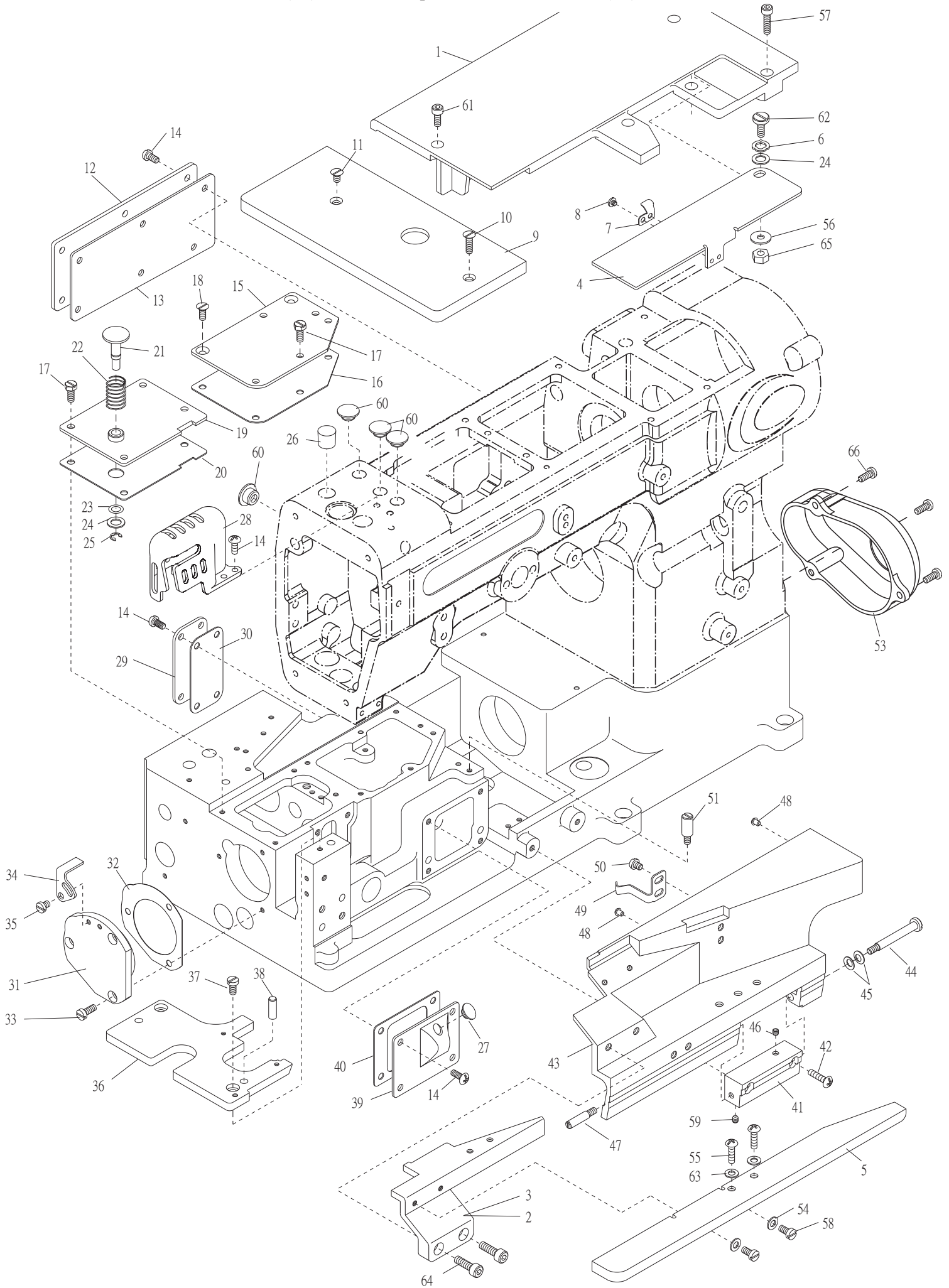
1.FTD7000 本體與外裝零件(一) Frame Components For FTD7000(一)



1.FTD7000 本體與外裝零件(一) Frame Components For FTD7000(一)

序號	物料編號	名稱	單位用量
Ref. No.	Parts Number	Description	Amt. Req.
1	22400001011	上軸蓋 Top Cover -----	1
2	8MC04281207D	螺絲 Screw (CT0102 M4-0.7*12) -----	14
3	22400001031	油封 Gasket -----	1
4	22400001041	油鏡 Oil Window -----	1
5	22200002552	孔塞 Plug -----	1
6	2200000139	定位銷 Knock Pin (CT0139)-----	2
7	22400001071	針棒蓋 Needle Cover -----	1
8	2240000108	油封 Gasket -----	1
9	22000001091	孔塞 Plug (CT01091) 灰色 -----	1
10	8SM95281017A	螺樁 Stud (SH0243 3/8"-28*10) -----	1
11	2210000111	封蓋 Oil Filter Cover -----	1
12	2210000112	油封 Gasket -----	1
13	2280000113	側蓋 Oil Filter Cover -----	1
14	8MB04283809E	螺樁 Stud (CT0227 M4-0.7*38) -----	1
15	2200000228	孟形墊圈 Disk Washer (CT0228) -----	2
16	8MB04280605M	螺樁 Stud (CT0230 M4-0.7*6) -----	1
17	8MN04280400A	螺絲 Screw (CT0229 M4-0.7*4) -----	1
18	2210000118	減震橡膠 Rubber Cushion -----	2
19	22100001191	減震橡膠 Rubber Cushion -----	2
20	2210000120	夾簧 Latch Spring -----	1
21	8MC04280507D	螺絲 Screw (CT0122 M4-0.7*8) -----	2
22	8MB04280707M	螺樁 Stud (FT0122 M4-0.7*21) -----	1
23	2280000123	支架 Side Cover Holder -----	1
24	8MC04280807D	螺絲 Screw (CT0130 M4-0.7*8) -----	1
25	8MA04280307A	螺帽 Nut (CT0238 M4-0.7*3) -----	1
26	8MB04281607A	螺絲 Screw (CT0724 M4-0.7*16) -----	1
27	2200000136	孔塞 Plug (CT0136) -----	1
28	2230000128	車頭 Frame Unit -----	1
28-A	2240000135	車頭上座 Frame Unit -----	1
28-B	2280000128B	車頭下座 Frame Unit -----	1
29	8MM06402010A	螺絲 Screw (SH0444 M6-1*20) -----	6
30	2210000130	下座腳樁 Supporting Bar -----	4
31	66485-1	車型銘板 Model Plate -----	1
32	66620	鉚釘 Rivet (6620) -----	4
33	2210000133	油封 Gasket -----	1
34	2210000134	油盤 Oil Reservoir -----	1
35	2100000244	油封 Seal (SH0244)-----	1
36	8MM10603016A	螺絲 Screw (CT0138 M10-1.5*30) -----	4
37	66484-11	銘板 Plate -----	1
38	66480-14	機器號碼牌 Machine No. Plate -----	1
39	66485-9	上車頭銘板 Model Plate -----	1
40	22400001131	導風管 Guid Pipe-----	1
41	8MC04281007D	螺絲 Screw (CT0113 M4-0.7*10) -----	2

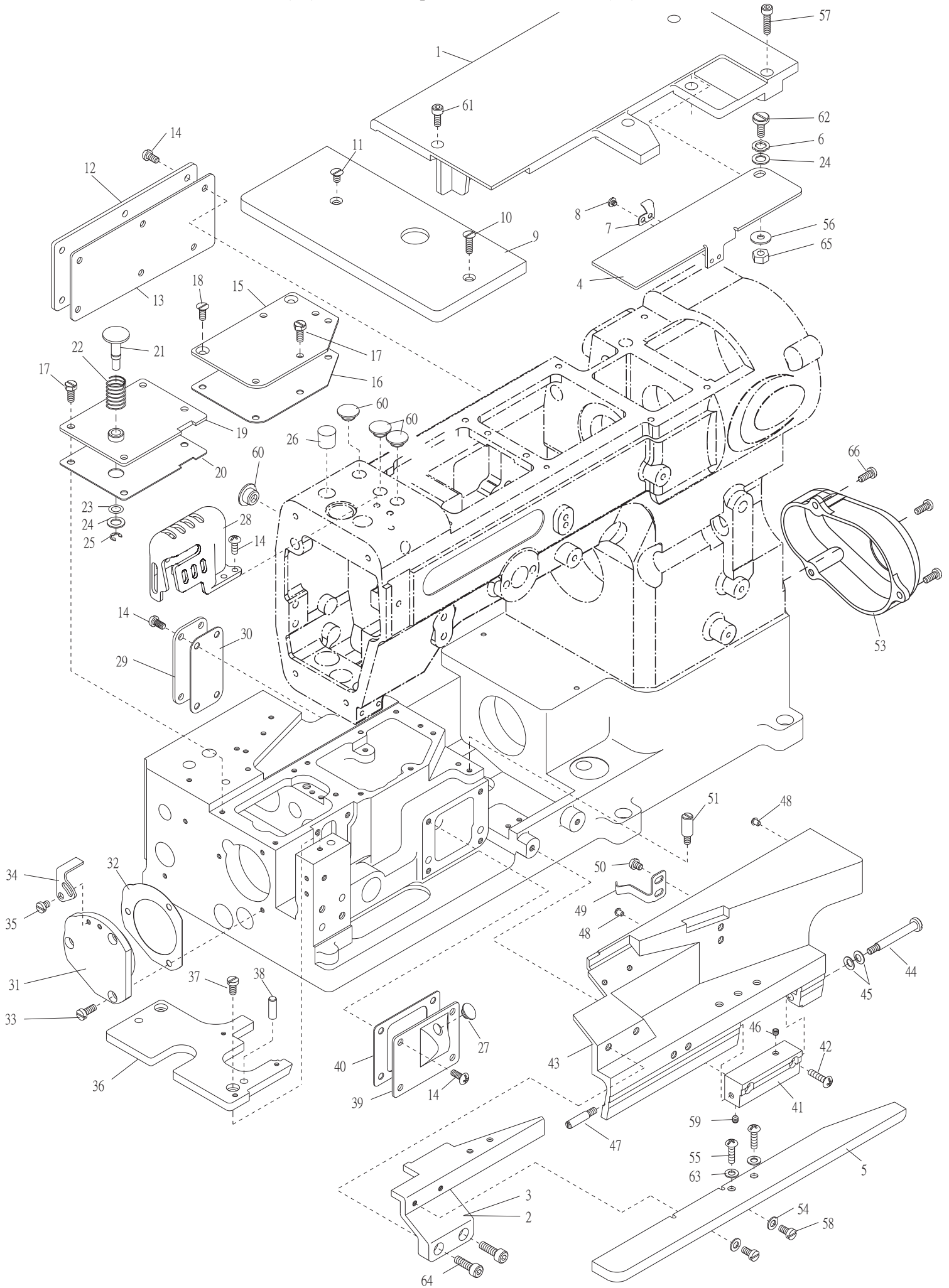
2.FTD7000 本體與外裝零件(二) Frame Components For FTD7000(二)



2.FTD7000 本體與外裝零件(二) Frame Components For FTD7000(二)

序號	物料編號	名稱	單位用量
Ref. No.	Parts Number	Description	Amt. Req.
1	2210000201	封蓋 Rear Cover -----	1
*2	2280000202	下座前蓋活動塊 Movable Block -----	1
**3	2280000203	下座前蓋活動塊 Movable Block -----	1
4	22100002041	護線蓋 Cloth Plate -----	1
5	2280000205	下座前蓋支架 Front Cove Holder -----	1
6	90WW060	波形墊圈 Wave Washer -----	1
7	2210000207	夾簧 Latch Spring -----	1
8	8MB03200306A	螺絲 Screw (UTB0436 M3-0.5*2.5) -----	2
9	2280000209	左布板 Cloth Plate -----	1
10	8ME04281408A	螺絲 Screw (CT1140 M4-0.7*14) -----	1
11	8ME04280708A	螺絲 Screw (CT0206 M4-0.7*7) -----	1
12	2200000210	封蓋 Rear Cover (CT0210) -----	1
13	2200000209	油封 Gasket (CT0209)-----	1
14	8MC04280807D	螺絲 Screw (CT0130 M4-0.7*8) -----	16
15	2210000215	封蓋 Oil Filter Cover -----	1
16	2210000216	油封 Gasket -----	1
17	8MK04281007A	螺絲 Screw (FT0217 M4-0.7*10) -----	9
18	8ME04281008A	螺絲 Screw (FT0218 M4-0.7*10) -----	2
19	2210000219	封蓋 Oil Filter Cover -----	1
20	2210000220	油封 Gasket -----	1
21	2210000221	止動銷 Stopper Pin -----	1
22	2210000222	彈簧 Spring -----	1
23	90OR060	油環 OIL Rin (P6)-----	1
24	2200000910	墊圈 Washer (CT0910) -----	2
25	90ER040	E形扣環 E Ring -----	1
26	22000002081	孔塞 Plug (CT02081) 白色-----	1
27	22100002271	孔塞 Plug (FT02271) 白色-----	1
28	2270000212	針棒護蓋 Needle Bar Protector -----	1
29	2210000229	封蓋 Oil Filter Cover -----	1
30	2210000230	油封 Gasket -----	1
31	2210000231	軸承座 Crankshaft Bushing -----	1
32	2210000232	油封 Gasket -----	1
33	8MB04281007K	螺絲 Screw (CT1237 M4-0.7*10) -----	3
34	2210000234	止動鉤 Pushbutton Stop -----	1
35	8MB04280507K	螺絲 Screw (FT0235 M4-0.7*5) -----	2
36	2210000236	針板座 Needle Plate Seat -----	1
37	8MB04280807K	螺絲 Screw (CT0215 M4-0.7*8) -----	2
38	2200001133	定位銷 Knock Pin -----	2
39	2210000239	封蓋 Oil Filter Cover -----	1
40	2210000240	油封 Gasket -----	1
41	2280000241	絞鏈 Hinge -----	1
42	8MC04281407D	螺絲 Screw (CT0225 M4-0.7*14) -----	2
43	2280000243	下座前蓋 Front Cover -----	1
44	8MB04284209E	螺椿 Stand (FT0244 M4-0.7*42) -----	1
45	2200000228	孟形墊圈 Disk Washer (CT0228) -----	2
46	8MN04280400A	螺絲 Screw (CT0229 M4-0.7*4)-----	1
47	8MB04280705M	螺椿 Stand (FT0247 M4-0.7*7) -----	1
48	22100001191	減震橡膠 Rubber Cushion -----	2
49	2210000249	夾簧 Latch Spring -----	1
50	8MC04280507D	螺絲 Screw (CT0122 M4-0.7*5) -----	2

2.FTD7000 本體與外裝零件(二) Frame Components For FTD7000(二)



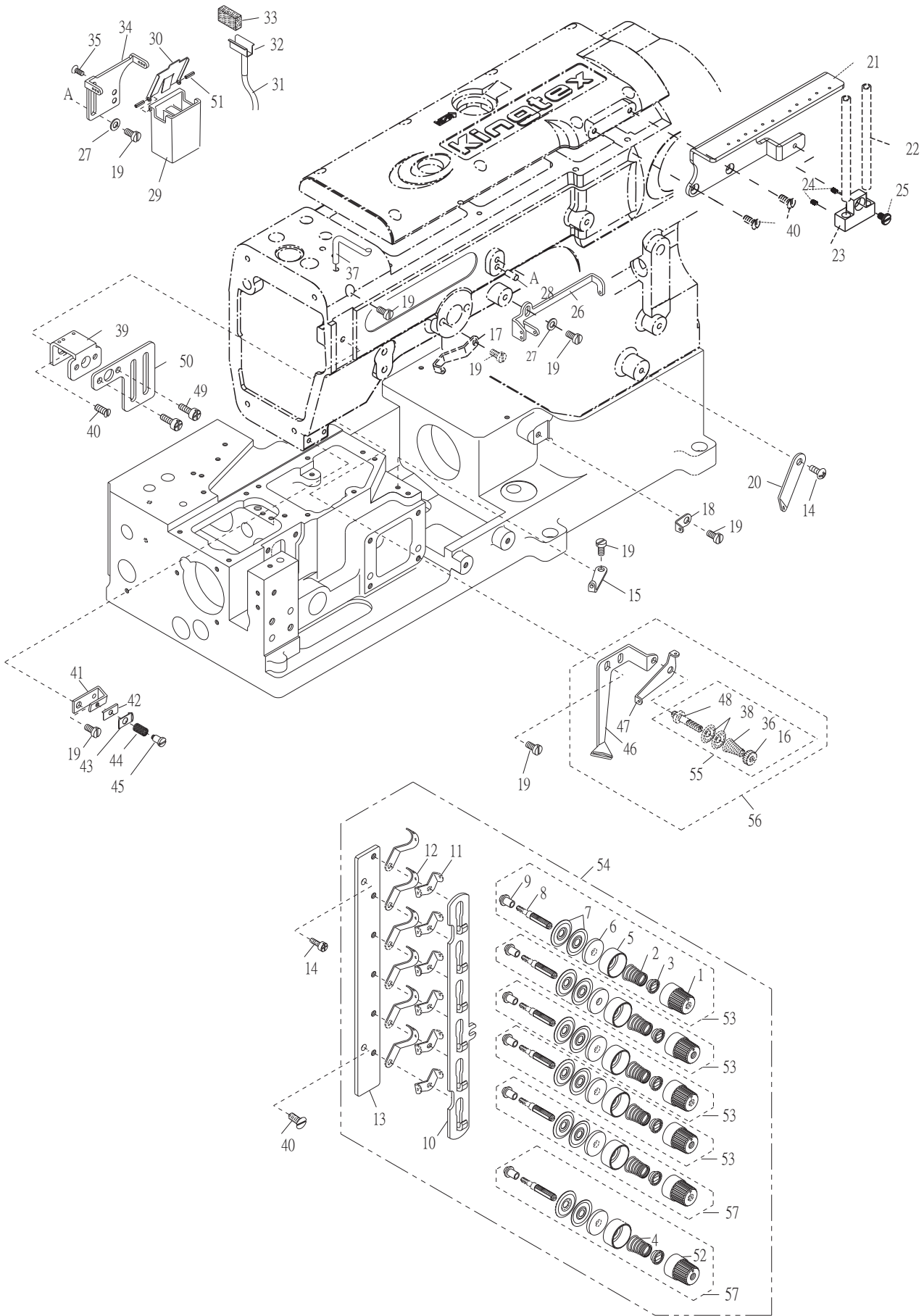
2.FTD7000 本體與外裝零件(二) Frame Components For FTD7000(二)

序號	物料編號	名稱	單位用量
Ref. No.	Parts Number	Description	Amt.Req.
51	8MB04280707M	螺樁 Stand (FT0122 M4-0.7*7) -----	1
52	-----	-----	-
53	2230000253	側蓋 Side Cover -----	1
54	2100000223	墊圈 Washer -----	2
55	8MC05321209D	螺絲Screw (F02-55 M5-0.8*12) -----	2
56	2210090124	墊圈 Washer -----	1
57	8MM04281607A	螺絲 Screw (FT0202 M4-0.7*16) -----	3
58	8MB04281207K	螺絲 Screw (CT0239 M4-0.7*12) -----	2
59	8MN04280500C	螺絲 Screw (FT1222 M4-0.7*5) -----	1
60	22000001091	孔塞 Plug (CT01091)-----	4
61	8MM04281007A	螺絲 Screw(FT0203 M4-0.7*10) -----	1
62	2210090121	螺絲 Screw -----	1
63	2200001025	墊圈 Washer -----	2
64	8MM05321409A	螺絲 Screw (CT0632 M5-0.8*14) -----	2
65	8MA95300307A	螺帽 Nut -----	1
66	8MC04281007D	螺絲 Screw (CT0113 M4-0.7*10) -----	3

* : 40M,48M,56M 用For 40M,48M,56M

** : 64M 用For 64M

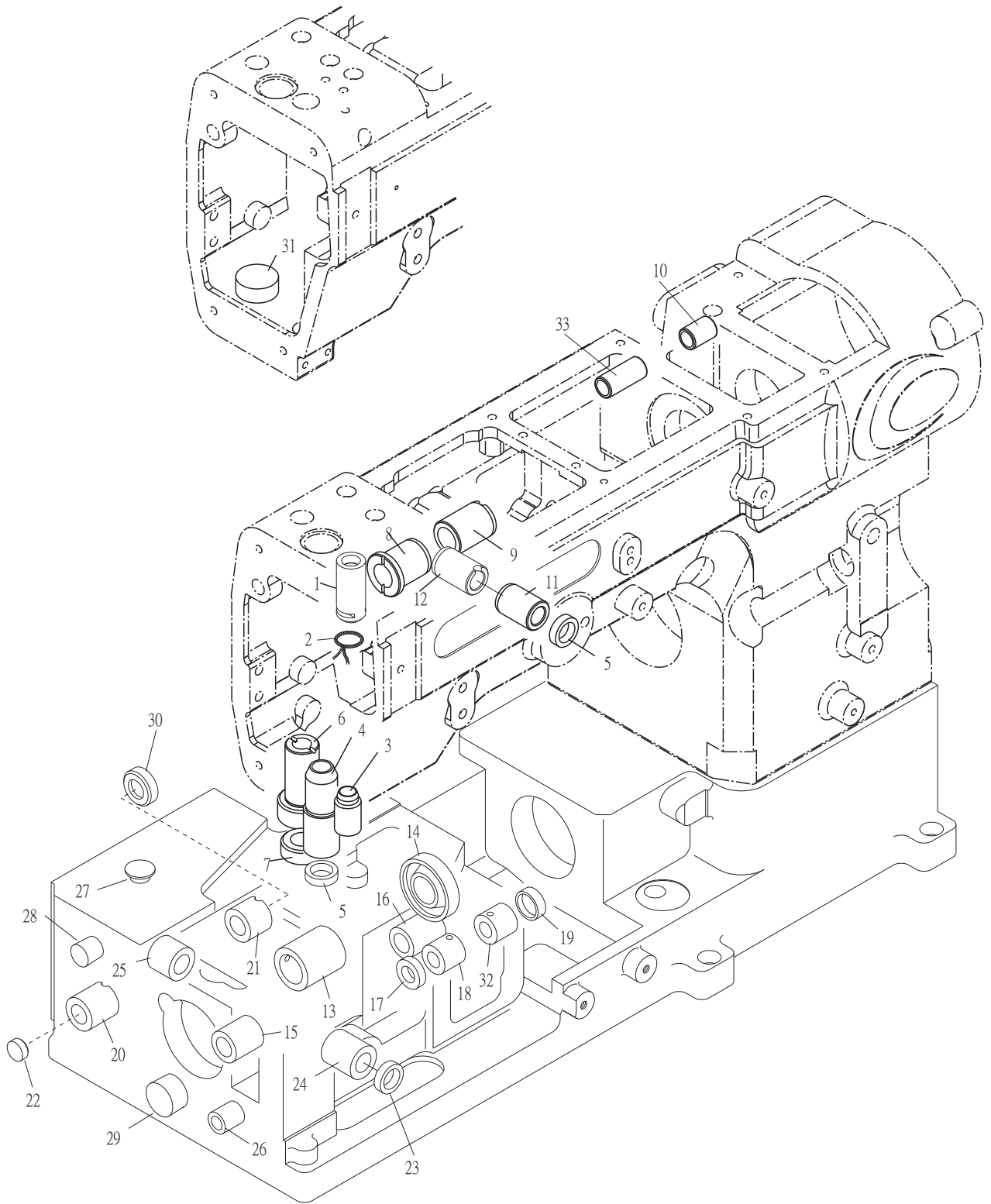
3.FTD7000 導針與張力調整零件 Thread Guide And Tension Components For FTD7000



3.FTD7000 導針與張力調整零件 Thread Guide And Tension Components For FTD7000

序號	物料編號	名稱	單位用量
Ref. No.	Parts Number	Description	Amt.Req.
1	2100001121	張力調整螺帽 Tension Nut (Red) (Sh1121)	4
2	2100001123	彈簧 Spring (Red) (SH1123)	4
3	2200000303	套管 Bushing (CT0303)	6
4	2100041131	彈簧 Spring (Yellow) (SH1131)	2
5	2200000305	彈簧座 Spring Seat (CT0305)	6
6	2100001127	羊毛氈 Felt (SH1127)	6
7	2100001126	張力控制盤 Tension Disc (SH1126)	12
8	22000003081	螺樁 Stud (CT0308)	6
9	22000003091	隔環 Spacer (CT0309)	6
10	2200600210	鬆線滑板 Release Wedge	1
11	2200000311	導線 Thread Guide (CT0311)	6
12	2200000312	導線 Thread Guide (CT0312)	6
13	2200600213	張力控制組座 Tension Post Support	1
14	8MC04280807D	螺絲 Screw (CT0130 M4-0.7*8)	2
15	2210000315	導線 Thread Guide	1
16	2200000357	螺帽 Nut (CT0357)	1
17	2210000317	導線 Thread Guide	1
18	2210000318	導線 Thread Guide	1
19	8MB04280807K	螺絲 Screw (CT0215 M4-0.7*8)	9
20	2200000317	導線 Thread Guide (CT0317)	1
21	22400003021	導線桿 Thread Guide	1
22	2200000327	導線管 Thread Guide Pipe	2
23	2240000301	導線座 Thread Guide Holder	1
24	8MN03200300A	螺絲 Screw (CT0115 M3-0.5*3)	2
25	8MB04280608A	螺絲 Screw (UTB0130 M4-0.7*6)	1
26	2210000326	導線 Thread Guide	1
27	2100000223	墊圈 Washer W3	2
28	90ST0410	定位銷 Knock Pin	1
29	22000003351	油杯 Cooler Oil Tank (CT0335)	1
30	2200000336	油杯蓋 Cooler Oil Tank Cover (CT0336)	1
31	66800	油線 Oil Wick	1
32	2200000338	線夾 Wick Clamp (CT0338)	1
33	2200000339	羊毛氈 Felt (CT0339)	1
34	2200000340	導線 Thread Guide (CT0340)	1
35	8TE03440806A	螺絲 Screw	2
36	2200000356	彈簧 Spring (CT0356)	1
37	22000003431	導線 Thread Guide (CT0343)	1
38	2200000355	張力控制盤 Tension Disc (CT0355)	2
39	2200000345	導線 Thread Guide (CT0345)	1
40	8ME04280708A	螺絲 Screw (CT0206 M4-0.7*7)	4
41	2200000347	張力控制組座 Thread Retainer Support (CT0347)	1
42	2200000348	針線控制板 Thread Guide Plate (CT0348)	1
43	2200000349	針線控制壓板 Tension Control plate (CT0349)	1
44	22000003501	彈簧 Spring (CT0350)	1
45	8MC03200807G	螺樁 Stud (CT0351 M3-0.5*8)	1
46	2210000346	導線 Thread Guide	1
47	2200000353	導線 Thread Guide (CT0353)	1
48	2200000354	螺樁 Stud (CT0354)	1
49	8MC04280507D	螺絲 Screw (CT0122 M4-0.7*5)	2
50	2200000359	揚線臂護線罩 Takeup Arm Protect (Ct0359)	1
51	90SP0206T	彈簧銷 Spring Pin (CT0360)	2
52	2100001121A	張力調整螺帽 Tension Nut (Yellow) (Sh1121)	2
53	231A0001922	張力控制組 Thread Asm. (Red)	4
54	220A0600218	鬆線組 Thread Tension Mechanism Asm.	1
55	227A0000342	張力控制組 Thread Retainer Asm	1
56	221A0000356	鬆線組 Thread Tension Mechanism Asm. (F0346A)	1
57	220A0000315	張力控制組 Thread Asm. (Yellow)	2

4.FTD7000 軸襯與油封 Bushing And Seal For FTD7000



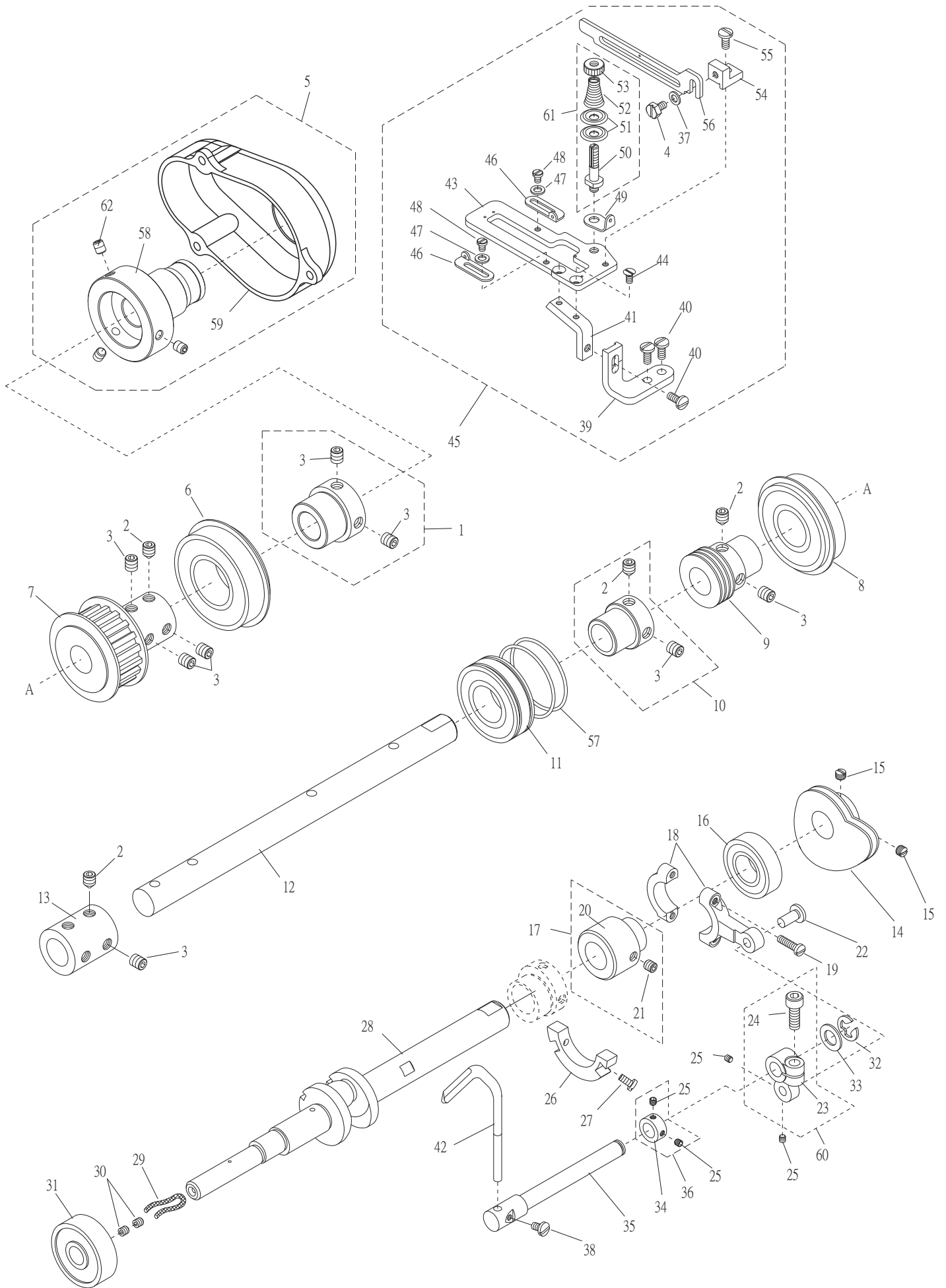
4.FTD7000 軸襯與油封 Bushing And Seal For FTD7000

序號	物料編號	名稱	單位用量
Ref. No.	Parts Number	Description	Amt.Req.
1	2210000401	軸襯 Bushing -----	1
2	66800	油線 Oil Wick -----	1
3	2210000403	軸襯 Bushing -----	1
4	2210000404	軸襯 Bushing -----	1
5	2200000404	油封 Oil Seal (CT0404) -----	2
*6	2220000405	軸襯 Bushing -----	1
*7	2200000406	油封 Oil Seal (CT0406) -----	1
*8	2210000408	軸襯 Bushing -----	1
*9	2200000408	軸襯 Bushing (CT0408) -----	1
10	2240000409	軸襯 Bushing (CT0409) -----	1
11	2200000410	軸襯 Bushing (CT0410) -----	1
12	2200000411	軸襯 Bushing (CT0411) -----	1
13	2210000413	軸襯 Bushing -----	1
14	2210000414	油封 Oil Seal -----	1
15	2210000415	軸襯 Bushing -----	1
16	2210000416	軸襯 Bushing -----	1
17	2210000417	油封 Oil Seal -----	1
18	2210000418	軸襯 Bushing (Left) -----	1
19	22100004191	孔塞 Plug -----	1
20	2210000420	軸襯 Bushing -----	1
21	2210000421	軸襯 Bushing -----	1
22	22100004221	孔塞 Plug -----	1
23	2210000423	油封 Oil Seal -----	1
24	2210000424	軸襯 Bushing -----	1
25	2210000425	軸襯 Bushing -----	1
26	2210000426	軸襯 Bushing -----	1
27	22000001091	孔塞 Plug (CT01091) 白色-----	1
28	22000002081	孔塞 Plug (CT02081) 白色-----	1
29	22100004291	孔塞 Plug -----	1
30	22100004301	孔塞 Plug -----	1
**31	2200000422	孔塞 Plug (CT0422) -----	1
32	2210000432	軸襯 Bushing (Right) -----	1
33	2240000422	軸襯 Bushing -----	1

*具有上飾線With top cover thread

**不具有上飾線Without top cover thread

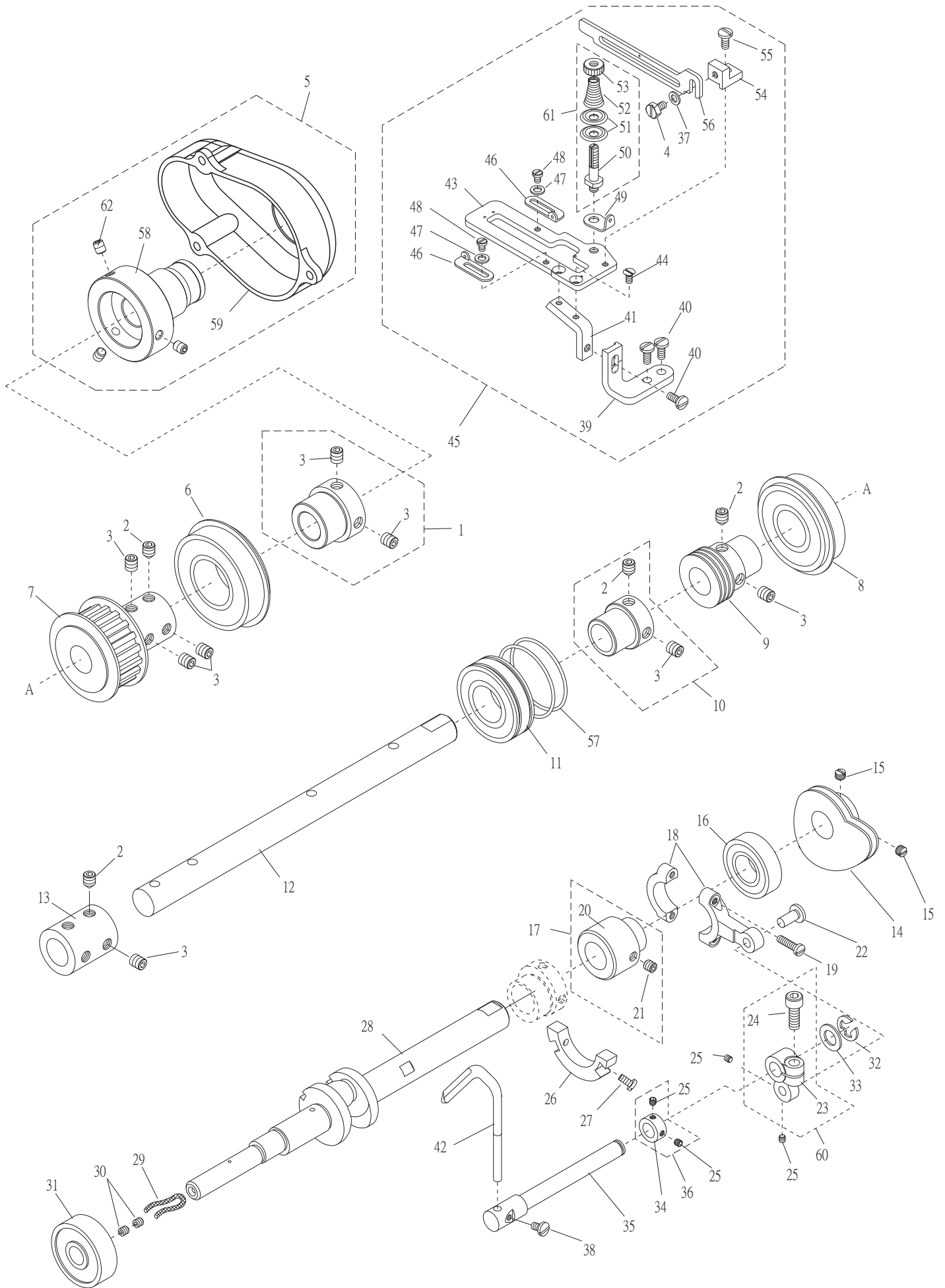
5. FTD7000 下軸與相關零件 Lower Main Shaft Components For Ft7000



5. FTD7000 下軸與相關零件 Lower Main Shaft Components For FTD7000

序號	物料編號	名稱	單位用量
Ref. No.	Parts Number	Description	Amt. Req.
1	2230000501	套管 Bushing -----	1
2	8MN06400800C	螺絲 Screw (C0502 M6-1*8) -----	5
3	8MN06400600A	螺絲 Screw (C0244 M6-1*6) -----	9
4	8MK85240607A	螺絲 Screw (FT0504 M3.5-0.6*6) -----	1
*5	223A0000505	套管接頭組 Joint Asm -----	1
6	90BB2552154	滾珠軸承 Ball Bearing (CT0504) -----	1
7	2240000505	齒形皮帶輪 Timing Pulley (CT0505) -----	1
8	90BB2047144	滾珠軸承 Ball Bearing (CT0506) -----	1
9	2210000509	蝸桿 Worm -----	1
10	2210000610	套管 Bushing (CT0606)-----	1
11	90BB2042126	滾珠軸承 Ball Bearing -----	1
12	2230000512	軸 Shaft -----	1
13	2210000513	連軸器 Shaft Joint -----	1
14	2210000514	揚線凸輪 Looper Thread Takeup Cam -----	1
15	8MH05320400A	螺絲 Screw (C0523 M5-0.8*4)-----	2
16	90BB153209	滾珠軸承 Ball Bearing -----	1
17	221A0000562	偏心輪組 Eccentric Asm. (F0520A) -----	1
18	2210000518	連桿 Connecting Rod -----	1
19	8MB85241306K	螺絲 Screw (FT0519 M3.5-0.6*13) -----	2
20	2210000520	偏心輪 Eccentric -----	1
21	8MN05320500E	螺絲 Screw (C0903 M5-0.8*5) -----	2
22	2210000522	連結銷 Connecting Pin -----	1
23	2210000523	曲柄 Lever -----	1
24	8MM05321209A	螺絲 Screw (F0524 M5-0.8*12) -----	1
25	8MN03200300A	螺絲 Screw (C0115 M3-0.5*3) -----	4
26	2210000526	配重環 Counterweight -----	1
27	8MB03200606K	螺絲 Screw (C1207 M3-0.5*6) -----	2
28	2210000528	曲軸 Crank Shaft -----	1
29	66800	油線 Oil Wick -----	2
30	8MN04280400A	螺絲 Screw (C0229 M4-0.7*4) -----	2
31	90BB103511	滾珠軸承 Ball Bearing -----	1
32	90ER060	E形扣環 E Ring -----	1
33	2210000533	墊圈 Washer-----	1
34	2210000534	定位環 Collar -----	1
35	2210000535	後導針器驅動軸 Driving Shaft -----	1
36	221A0000563	定位環組 Collar Asm. (F0534A)-----	1
37	2100000223	墊圈 Washer (W3) -----	1
38	8MB85240407A	螺絲 Screw (FT0538 M3.5-0.6*5) -----	1
39	2210000539	支架 Support -----	1
40	8MB04280807K	螺絲 Screw (C0215 M4-0.7*8) -----	3
41	2210000541	承扳支臂 Support -----	1
42	5221NG00562	後導針器 Needle Guide (NGF00D2) -----	1
43	2210000543	導線承板 Thread Guide Seat -----	1
44	8ME03200606A	螺絲 Screw (C0235 M3-0.5*6) -----	2
45	221A0000545	導線組 Thread Guide Asm. (F0539A)-----	1
46	2210000546	導線 Thread Guide -----	2
47	2210000547	墊圈 Washer -----	2
48	8MB03200405A	螺絲 Screw (F0548 M3-0.5*4) -----	2
49	2210000318	導線 Thread Guide -----	1
50	2200000354	螺樁 Stud (Ct0354)-----	1

5. FTD7000 下軸與相關零件 Lower Main Shaft Components For Ft7000

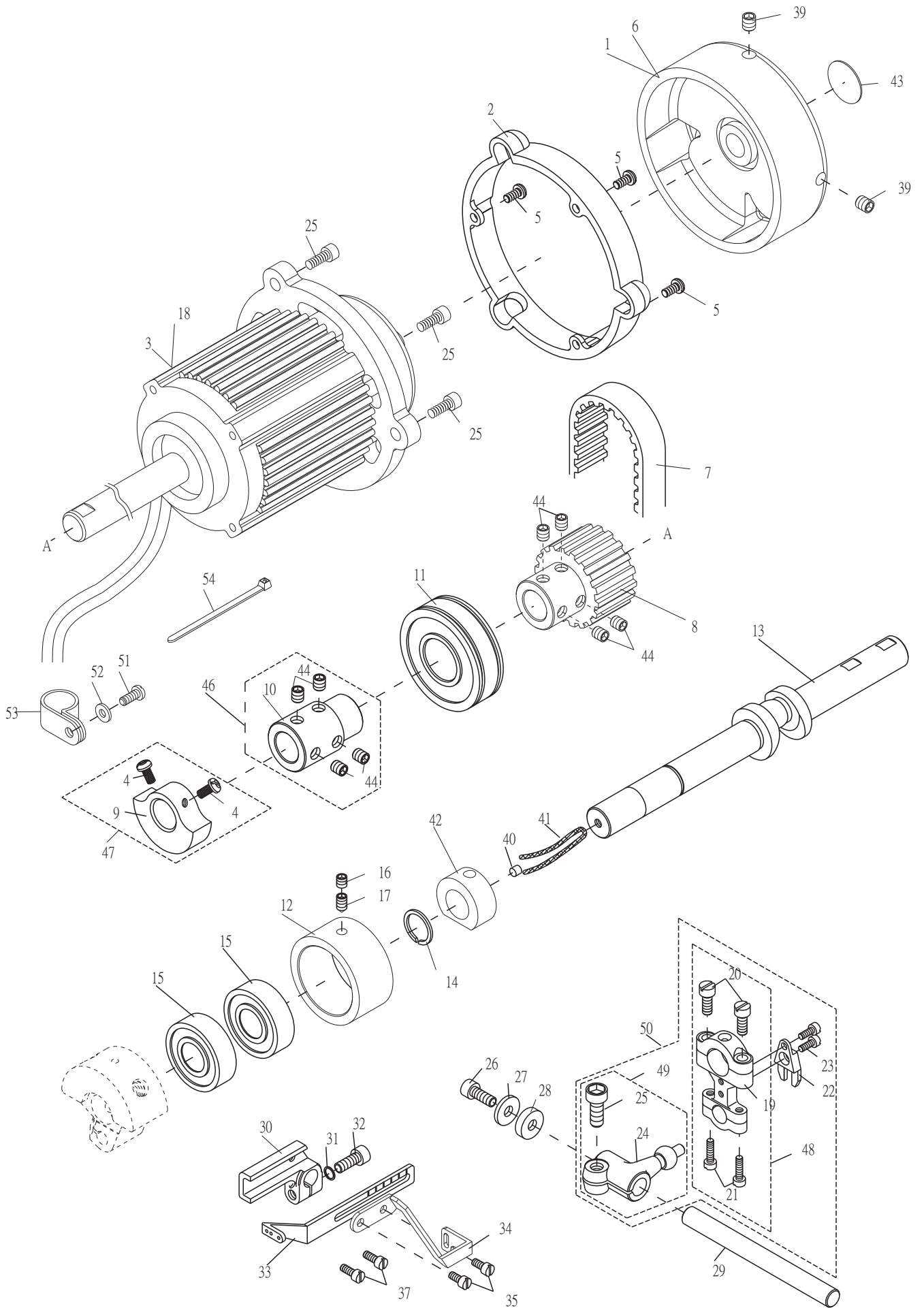


5. FTD7000 下軸與相關零件 Lower Main Shaft Components For FTD7000

序號	物料編號	名稱	單位用量
Ref. No.	Parts Number	Description	Amt.Req.
51	2200000355	張力控制盤 Tension Disc (CT0355) -----	2
52	2200000356	錐形彈簧 Spring (CT0356) -----	1
53	2200000357	螺帽 Nut (CT0357) -----	1
54	2210000554	支架 Support -----	1
55	8MB85240807K	螺絲 Screw (F0555 M3.5-0.6*8) -----	1
56	2210000556	導線 Thread Guide -----	1
57	2200000547	O形油環 O Ring (CT0547) -----	2
58	2230000558	套管 Joint -----	1
59	2230000559	側蓋 Side Cover -----	1
60	221A0000560	曲柄組 Collar Asm.(F0523A)-----	1
61	227A0000342	張力控制組 Thread Retainer Asm -----	1
62	8MN05320600A	螺絲 Screw (MT0729 M5-0.8*6) -----	3

*特註品 Custom-made Item

6. FTD7000 上軸與相關零件 Upper Main Shaft Components For FtD7000



6. FTD7000 上軸與相關零件 Upper Main Shaft Components For FTD7000

序號	物料編號	名稱	單位用量
Ref. No.	Parts Number	Description	Amt. Req.
▲1	2230000601	手輪 Handwheel -----	1
2	2240000602	護蓋 Cover -----	1
▲3	22400006032	迷你馬達 Mini Motor -----	1
4	8MB04280807K	螺絲 Screw (CT0215 M4-0.7*8) -----	2
5	8MP04280808A	螺絲 Screw (MT0235 M4-0.7*8) -----	3
△6	2230000601S	手輪 Handwheel -----	1
7	2200000607	齒形皮帶 Timeing Belt -----	1
8	22400006081	齒形皮帶輪 Timeing Pulley -----	1
9	2200000509	平衡錘 Balance Weight -----	1
10	2200000610	套管接頭 Joint -----	1
11	90BB204714	滾珠軸承 Ball Bearing -----	1
12	2240000612	軸承套筒 Bearing Sleeve -----	1
13	2210000613	曲軸 Crank Shaft -----	1
14	90SCR150	C形軸用扣環 C Ring -----	1
15	90BB1535115	滾珠軸承 Ball Bearing -----	2
16	8MN06400400A	螺絲 Screw (CT39-04-41 M6-1*4) -----	1
17	8MN06400600C	螺絲 Screw (CT80617 M6-1*6) -----	1
△18	2240000603S	迷你馬達 Mini Motor -----	1
19	2200000619	連桿 Connecting Rod -----	1
20	8MB95301407K	螺絲 Screw (C0620 M4.5-0.75*14) -----	2
21	8MB85241006K	螺絲 Screw (C0621 M3.5-0.6*10) -----	2
22	2200000622	定向導軌 Orient Guide -----	1
23	8MB03200806K	螺絲 Screw (C0623 M3-0.5*8) -----	2
24	2200000624	曲柄 Ball Lever -----	1
25	8MM06401610A	螺絲 Screw (C0625 M6-1*16) -----	4
26	8MM05321009A	螺絲 Screw (C0626 M5-0.8*10) -----	1
27	2200000627	墊圈 Washer -----	1
28	2200000628	隔環 Spacer -----	1
29	2200000629	軸 Shaft -----	1
30	2200000630	承座 Bracket -----	1
31	90SW050	彈簧墊圈 Spring Washer -----	1
32	8MM05321409A	螺絲 Screw (C0632 M5-0.8*14) -----	1
33	2200000633	針線揚線桿 Thread Take-up -----	1
*34	2220000634	裝飾線揚線桿 Thread Take-up -----	1
*35	8MB85240806K	螺絲 Screw (C0635 M3.5-0.6*8) -----	2
36	-----	-----	-
**37	8MB85240607K	螺絲 Screw (CT0637 M3.5-0.6*6) -----	2
38	-----	-----	-
39	8MN06400800A	螺絲 Screw (CT0549 M6-1*8) -----	2
40	2100001404	孔塞 Plug (S14-04) -----	1
41	66800	油線 Oil Wick -----	1
42	2240000642	聚油環 Oil Sleeve -----	1
43	66485-10	銘板 Plate -----	1
44	8MN06400600A	螺絲 Screw (CT0244 M6-1*6) -----	8
45	-----	-----	-
46	222A0000646	套管接頭組 Joint Asm -----	1
47	222A0000647	平衡錘組 Balance Weight Asm -----	1
48	222A0000648	連桿組 Connecting Rod Asm -----	1
49	222A0000649	曲柄組 Ball Lever Asm -----	1
50	222A0000650	連桿組 Connecting Rod Asm -----	1
51	8MB04281007K	螺絲 Screw (CT1237 M4-0.7*10) -----	1
52	2100000223	墊圈 Washer -----	1
53	4MN0210108	線夾 Cord Clamp -----	1
54	4UTB020306	束線 Plastic Binding Wire -----	1

▲ 賀欣規格 Ho hsing motor (選購 Optional)

△ 崧慶規格 Shokei motor (選購 Optional)

*具有上飾線 With top cover thread

**不具有上飾線 Without top cover thread