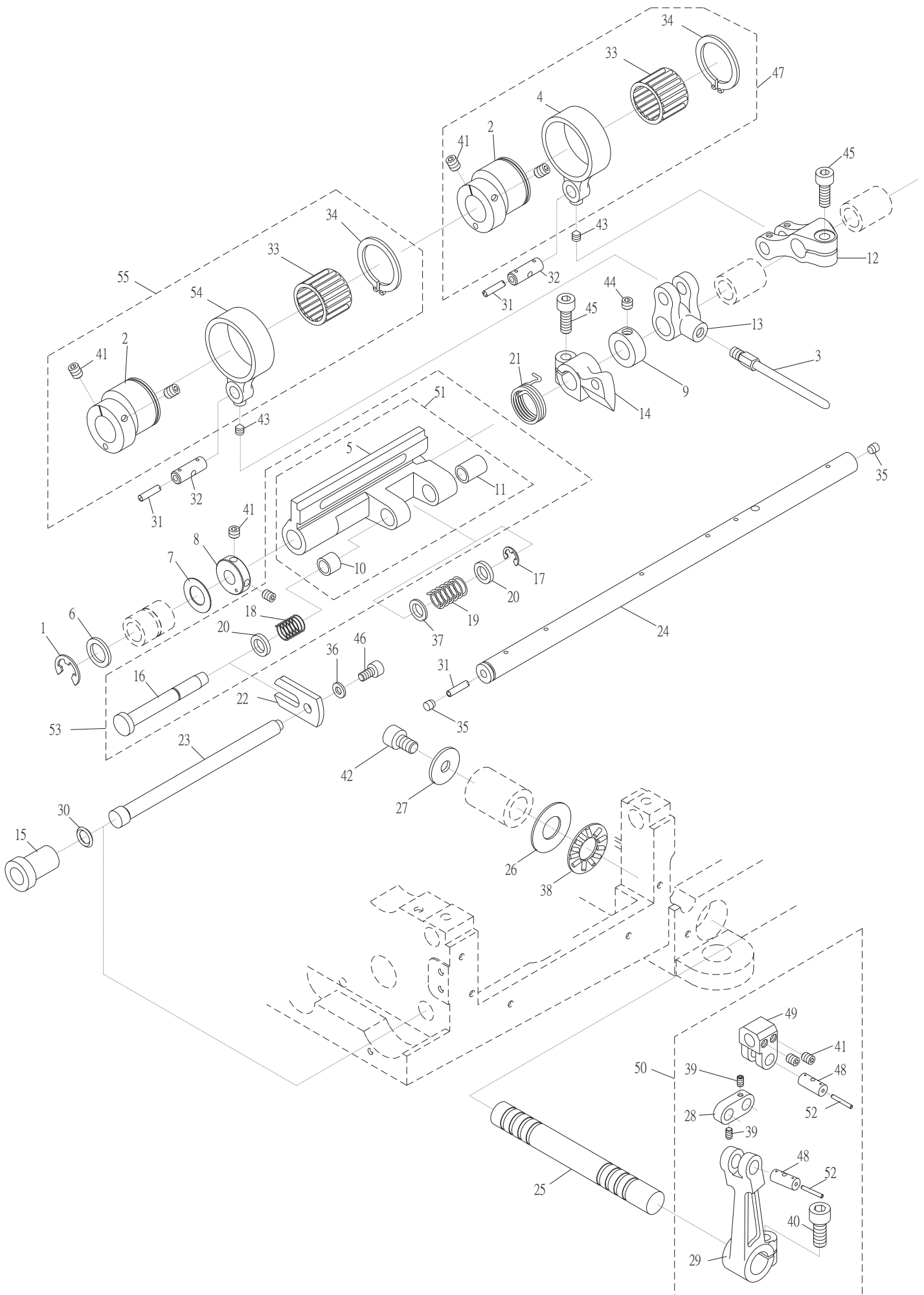


# 9.MT4500 結線鉤驅動機構 Looper Mechanism For Mt4500



9.MT4500 結線鉤驅動機構 Looper Mechanism For Mt4500

序號	物料編號	名稱	單位用量
Ref. No.	Parts Number	Description	Amt.Req.
1	90ER080	E形扣環 E Ring (F090404) -----	1
2	2310000902	偏心輪 Eccentric -----	2
3	2310000903	撥線桿 Take-up Rod -----	1
4	2310000904	連桿 Link -----	1
◎5	2310000905	承座 Bracket -----	1
6	23100009061	墊圈 Washer -----	1
7	2310000907	墊圈 Washer -----	1
8	2310000908	定位環 Collar -----	1
9	2310000909	定位環 Collar -----	1
◎10	2310000910	襯套 Clutch Tension Sleeve -----	1
◎11	2310000911	襯套 Clutch Tension Sleeve -----	1
12	2310000912	曲柄 Lever -----	1
13	2310000913	曲柄 Lever -----	1
14	23100009141	驅動柄 Looper Rocker Stopper -----	1
15	2310000915	栓Stud -----	1
16	23100009161	軸Shaft -----	1
17	90ER050	E形扣環E Ring (SH0620) -----	1
18	2310000918	彈簧 Spring -----	1
19	2310000919	彈簧 Spring -----	1
20	2310000920	墊圈 Washer -----	2
21	2310000921	彈簧 Spring -----	1
22	2310000922	隔板 Plate -----	1
23	2310000923	軸 Shaft -----	1
24	23100009241	軸 Shaft -----	1
25	2310000925	軸 Shaft -----	1
26	2310000926	止推墊圈 Thrust Washer -----	1
27	2310000927	墊圈 Washer -----	1
28	2310000928	連桿 Link -----	1
29	2310000929	擺動臂 Spreader Arm -----	1
30	2310000930	O形油環 O Ring -----	1
31	66800	油線 Oil Wick $\phi$ 3 -----	3
32	2310000805	連結銷 Link Pin -----	2
33	90NB252913	滾針軸承 Needle Bearing -----	2
34	90SCR250	C形扣環 C Ring -----	2
35	2310000835	孔塞 Plug -----	2
36	90SW040	彈簧墊圈 Spring Washer (UTB0317) -----	1
37	240012039	墊圈 Washer -----	1
38	2200001044	滾針止推軸承 Needle Bearing (CT1044) -----	1
39	8MN03200400C	螺絲 Screw (CT1242 M3-0.5*4) -----	2
40	8MM06401510A	螺絲 Screw (MT0845 M6-1*15) -----	1
41	8MN05320600A	螺絲 Screw (MT0729 M5-0.8*6) -----	8
42	8MM06401010A	螺絲 Screw (MT0419 M6-1*10) -----	1
43	8MN04280500C	螺絲 Screw (FT1222 M4-0.7*5) -----	2
44	8MN05320400A	螺絲 Screw (MT0944 M5-0.8*4) -----	2
45	8MM05321409A	螺絲 Screw (CT0632 M5-0.8*14) -----	2
46	8MM04280607A	螺絲 Screw (MT1134 M4-0.7*6) -----	1
47	231A0000947	偏心輪組 Eccentric Asm. -----	1
48	2310000948	連結銷 Link Pin -----	2
49	2310000949	撥線軸座 Retainer Bar Holder -----	1
50	231A0000950	撥線軸座組 Retainer Bar Holder Asm. -----	1
51	231A0000951	承座組 Bracket Asm. -----	1
52	66802	油線 Oil Wick $\phi$ 2 -----	2
53	231A0000953	承座組 Bracket Asm. -----	1
54	2310000954	連桿 Link -----	1
55	231A0000955	偏心輪組 Eccentric Asm. -----	1

◎需整組購買 Must be sold in complete set