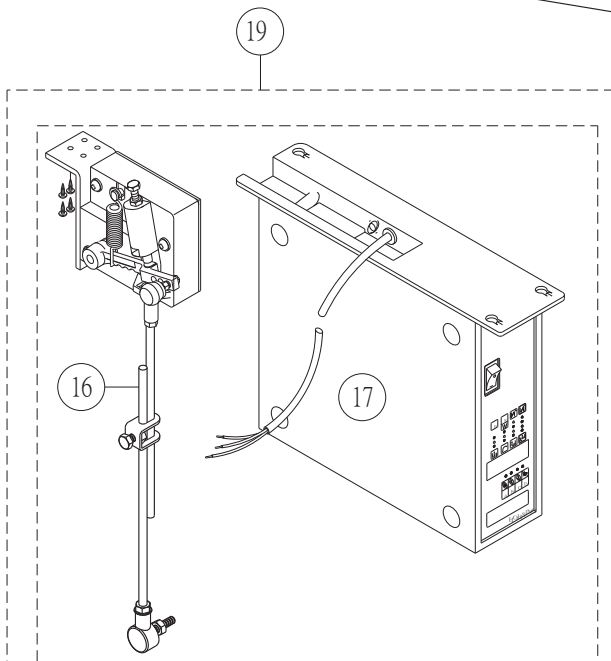
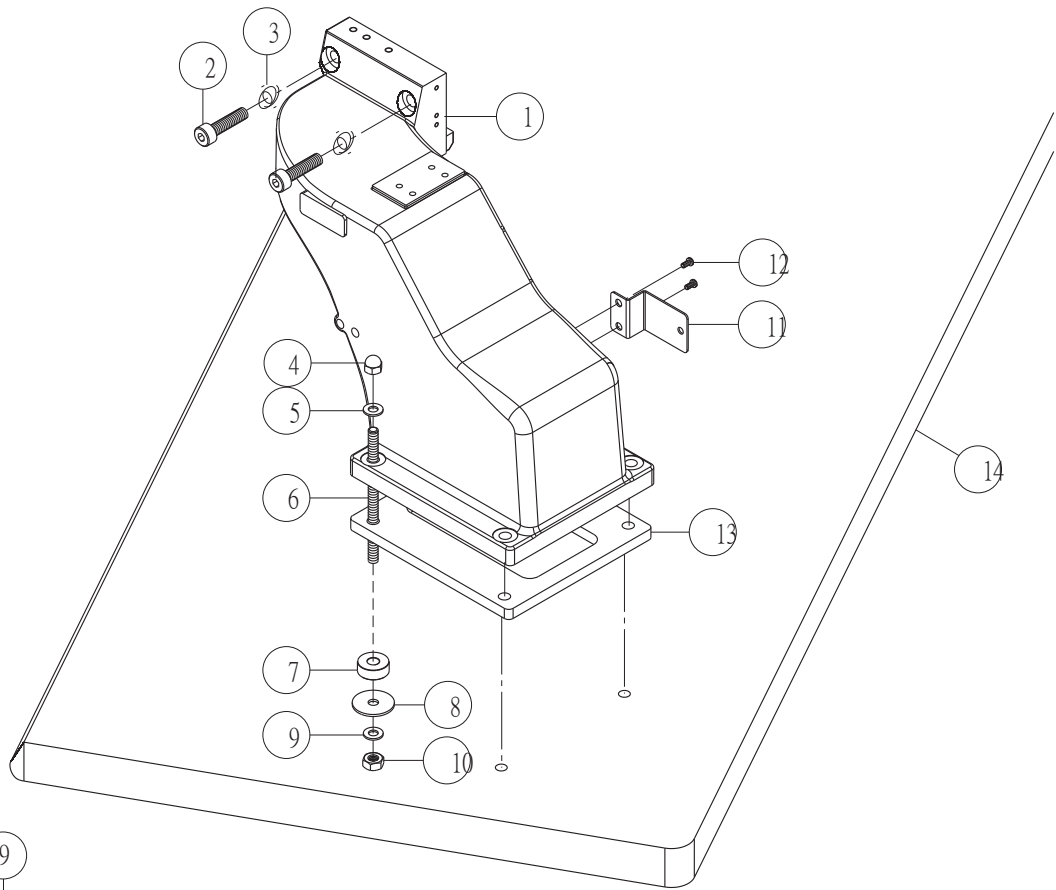


伺服馬達直結式安裝(一) / TTS34P / TTS34E Direct-drive Servo Motor (1) For TTS34P / TTS34E

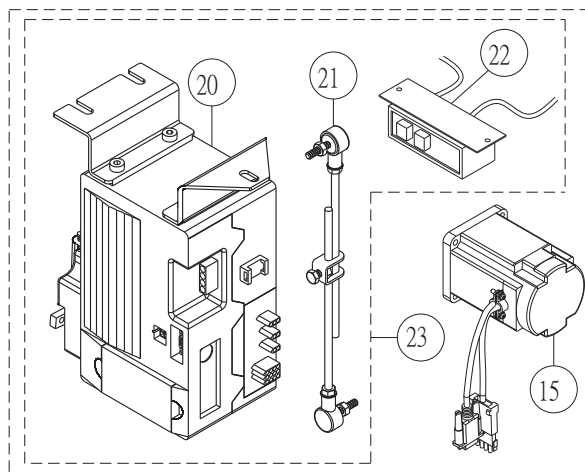


/MN042H
TTS34P(氣壓式)

15	4MN0070101
18	4MN007A0102

/MN043H
TTS34E (電動式)

15	4MN0070101
18	4MN007A0103

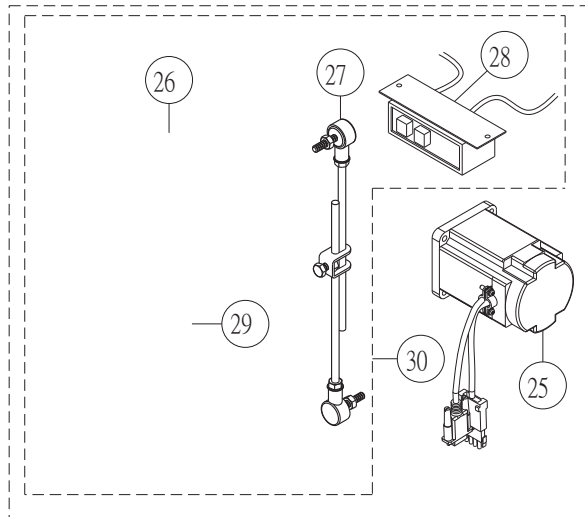


/MN044H
TTS34P (氣壓式)

15	4MN0070101
23	4MN008A0102

/MN045H
TTS34E (電動式)

15	4MN0070101
23	4MN008A0103



/MN052S
TTS34P (氣壓式)

25	4MN0100101
29	4MN010A0102

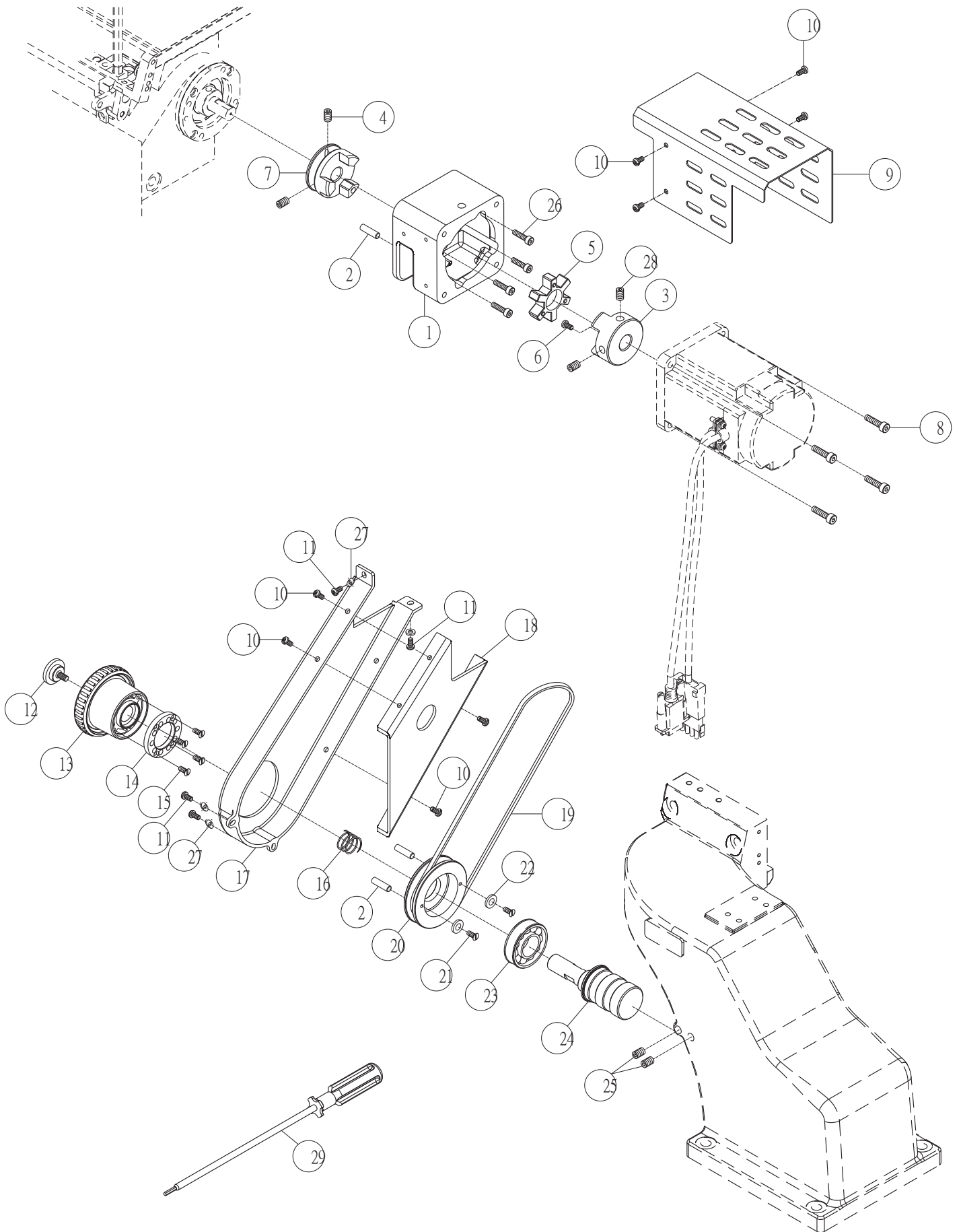
/MN053S
TTS34E (電動式)

25	4MN0100101
29	4MN010A0103

伺服馬達直結式安裝(一)/TTS34P/TTS34E Direct-drive Servo Motor (1) For TTS34P/TTS34E

序號	物料編號	名稱	單位	用量
Ref. No.	Parts Number	Description		Amt.Req.
1	4TT-S34001	車頭座	Machine Head Supporting Block	1
2	8MM10604016X	螺絲	Screw	2
3	90PW101802	墊圈	Washer	2
4	8MD08500713A	螺帽	Nut	4
5	90PW080	墊圈	Washer	4
6	66969-2	懸吊螺椿	Bolt	4
7	66946-1	減震橡膠	Cushion	4
8	90PW083002	墊圈	Washer	4
9	90SW080	彈簧墊圈	Spring Washer	4
10	8MA08500613A	螺帽	Nut	4
11	4TT-S34004	集線護罩	Cover	1
12	8MB05321008B	螺絲	Screw	2
13	4TT-S31004	減震橡膠墊	Supporting Block Cushion	1
14	66817-8	車板	Machine Table	1
15	4MN0070101	伺服馬達	Servo-Motor	1
16	4MN0010108	腳踏板開關組	Foot Petal Controller Unit	1
17	4MN0070102	控制箱(氣壓式)	Control box For TTS34P	1
	4MN0070103	控制箱(電動式)	Control box For TTS34E	1
18	4MN007A0102	控制箱組(氣壓式)	Contro Box Asm. For TTS34P	1
	4MN007A0103	控制箱組(電動式)	Contro Box Asm. For TTS34E	1
19	/MN042H	迷你馬達組(氣壓式)	Min-Motor Asm. For TTS34P	1
	/MN043H	迷你馬達組(電動式)	Min-Motor Asm. For TTS34E	1
20	4MN0080102	控制箱(氣壓式)	Control box For TTS34P	1
	4MN0080103	控制箱(電動式)	Control box For TTS34E	1
21	4MN0080104	控制箱拉桿	Control box Rod	1
22	4MN0080105	控制箱開關	Control box Botton	1
23	4MN008A0102	控制箱組(氣壓式)	Contro Box Asm. For TTS34P	1
	4MN008A0103	控制箱組(電動式)	Contro Box Asm. For TTS34E	1
24	/MN044H	迷你馬達組(氣壓式)	Min-Motor Asm. For TTS34P	1
	/MN045H	迷你馬達組(電動式)	Min-Motor Asm. For TTS34E	1
25	4MN0100101	伺服馬達	Servo-Motor	1
26	4MN0100102	控制箱(氣壓式)	Control box For TTS34P	1
	4MN0100103	控制箱(電動式)	Control box For TTS34E	1
27	4MN0090104	控制箱拉桿	Control box Rod	1
28	4MN0090105	控制箱開關	Control box Botton	1
29	4MN0090106	腳踏板開關	Foot Petal Controller Unit	1
30	4MN010A0102	控制箱組(氣壓式)	Contro Box Asm. For TTS34P	1
	4MN010A0103	控制箱組(電動式)	Contro Box Asm. For TTS34E	1
31	/MN052S	迷你馬達組(氣壓式)	Min-Motor Asm. For TTS34P	1
	/MN053S	迷你馬達組(電動式)	Min-Motor Asm. For TTS34E	1

伺服馬達直結式安裝(二) / TTS34P / TTS34E Direct-drive Servo Motor (2) For TTS34P / TTS34E



伺服馬達直結式安裝(二) /TTS34P /TTS34E Direct-drive Servo Motor (2) For TTS34P /TTS34E

序號	物料編號	名稱		單位用量
Ref. No.	Parts Number	Description		Amt.Req.
1	4TT-S34015	馬達座	Bracket	1
2	4TT-S34025	直銷	Pin	3
3	4TT-S34014	連軸器(右)	Connect(Right)	1
4	8MN06400600A	螺絲	Screw	2
5	4TT-S34013	緩衝墊	Cushion	1
6	8MB85240505A	螺絲	Screw	1
7	4TT-S34012	連軸器(左)	Connect(Left)	1
8	8MM06402010A	螺絲	Screw	4
9	4TT-S34016	馬達護罩	Cover	1
10	8MC04280607D	螺絲	Screw	8
11	8MC04280807D	螺絲	Screw	4
12	4TT-S34021	軸端螺樁	Stud	1
13	4TT-S34019	手輪	Handwheel	1
14	4TT-S34020	離合板	Clutch	1
15	8TE30001506A	螺絲	Screw	4
16	4TT-S31014	彈簧	Spring	1
17	4TT-S34022	皮帶蓋(大)	Cover	1
18	4TT-S34023	皮帶蓋(小)	Cover	2
19	90ANK25	三角皮帶	V-shaped belt	1
20	4TT-S34017	皮帶輪	Pulley	1
21	8ME03200506A	螺絲	Screw	2
22	4TT-S34003	止推墊圈	Washer	2
23	90BB204212ZZ	滾珠軸承	Ball Bearing	1
24	4TT-S34018	軸	Crankshaft	1
25	8MN06401000A	螺絲	Screw	2
26	8MM05322009A	螺絲	Screw	4
27	2120000159	墊圈	Washer	4
28	8MN06400800A	螺絲	Screw	2
29	66669	螺絲起子	Screwdriver	1