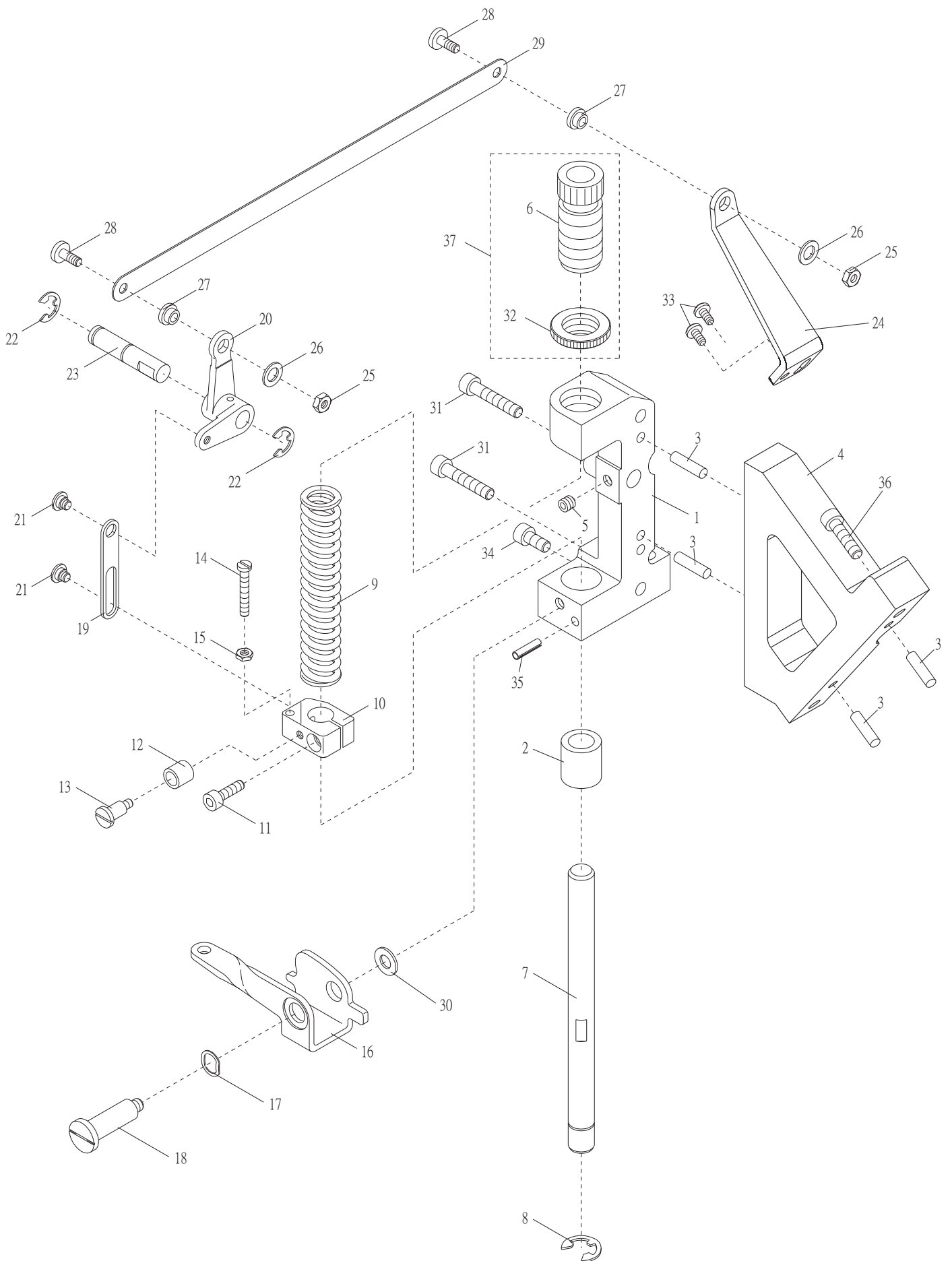


1. RP004 輔助拖輪 Puller Mechanism For RP004

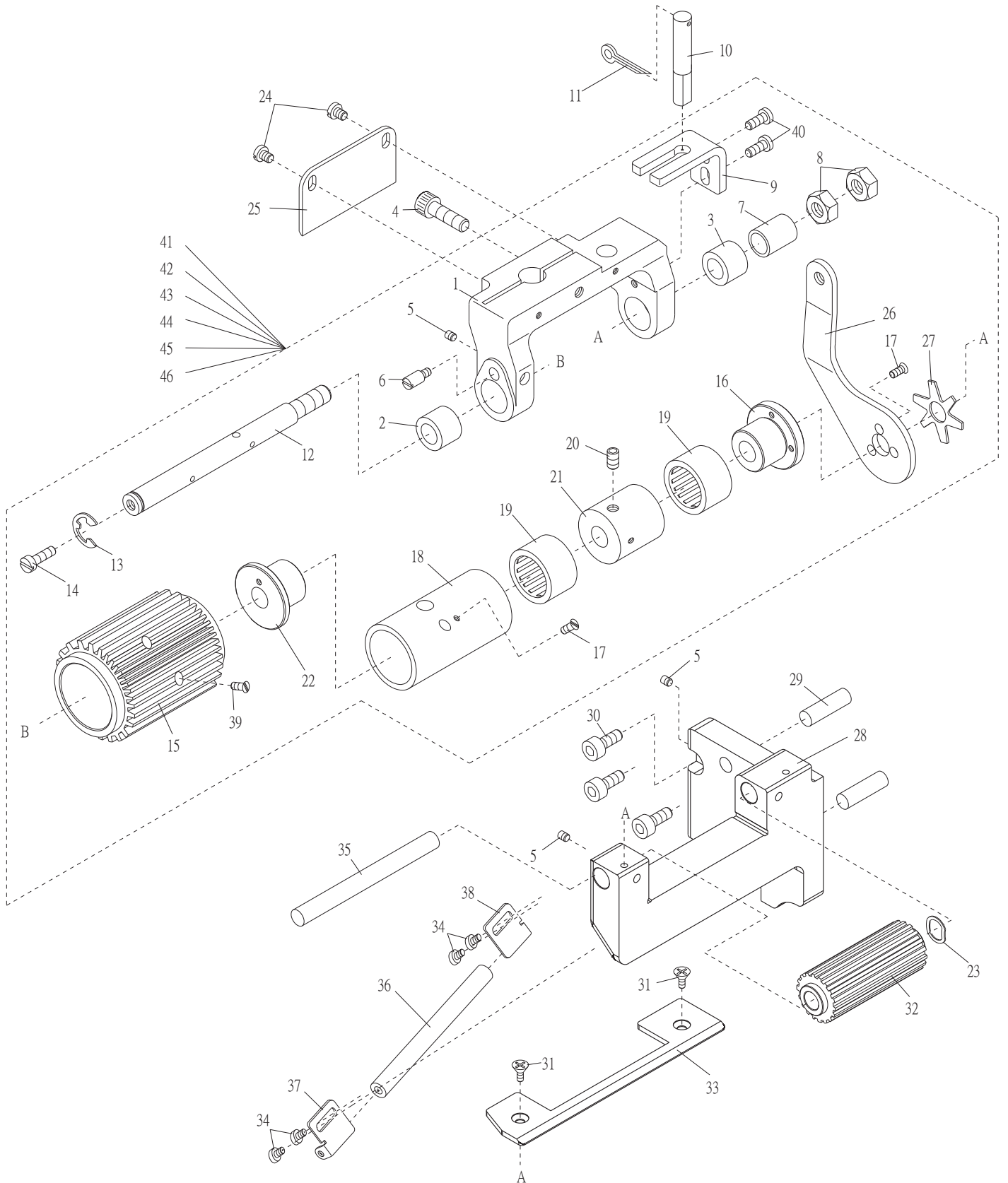


1. RP004 輔助拖輪 Puller Mechanism For RP004

序號	物料編號	名稱	單位用量
Ref. No.	Parts Number	Description	Amt. Req.
1	4RP0010101	機架 Upper Feed Roller Bracket -----	1
2	4RP0010102	軸襯 Roller Press Bar Bushing -----	1
3	4RP0010103	定位梢 Knock Pin -----	4
4	4RP0040104	機架座 Puller Bracket -----	1
5	8MN06400500A	螺絲 Screw (CT0513 M6-1*5) -----	1
6	2310001221	調壓螺椿 Spring Regulator -----	1
7	4RP0010107	軸 Upper Feed Rrller Press Bar -----	1
8	90ER100	扣環 Retaining Ring -----	1
9	4RP0010109	壓力彈簧 Roller Press Spring -----	1
10	4RP0010110	彈簧座 Roller Press Bar Bracket -----	1
11	8MM05321609A	螺絲 Screw (RP0111 M5-0.8*16) -----	1
12	4RP0010112	套管 Lifting Lever Sleeve -----	1
13	8SB44401510G	螺椿 Stud (RP0113 11/64"-40*14.6) -----	1
14	8SB44403006A	螺絲 Screw (RP0114 11/64"*30) -----	1
15	8SA44400307A	螺帽 Nut (SH0914 11/64"-40*2.5) -----	1
16	4RP0010116	揚昇手柄 Upper Feed Roller Lifting Lever -----	1
17	90WW105	波形墊圈 Corrugated Washer -----	1
18	8MB06403516G	螺椿 Stud (RP0118 M6-1*35) -----	1
19	4RP0010119	吊桿 Lifter Connecting Plate -----	1
20	4RP0010120	吊臂 Right Upper Feed Roller Arm -----	1
21	8SB48320510G	螺絲 Screw (RP0121 3/16"-32*5) -----	2
22	90ER080	扣環 Retaining Ring -----	2
23	4RP0010123	軸 Upper Feed Roller Lifter Pin -----	1
24	4RP0040124	吊臂 Left Upper Feed Roller Arm -----	1
25	8SA44400307A	螺帽 Nut (SH0914 11/64"*2.5)-----	2
26	2100000526	墊圈 Washer -----	2
27	4RP0010127	隔環 Spacer -----	2
28	8SB44401110B	螺絲 Screw (RP0128 11/64"-40*11) -----	2
29	4RP0010129	拉桿 Lifter Connecting Plate -----	1
30	2100000645	墊圈 Washer -----	1
31	8MM06403210B	螺絲 Screw (RP0131 M6-1*32) -----	2
32	2310001222	螺帽 Nut -----	1
33	8MP05320810A	螺絲 Screw (STB0117 M5-0.8*8) -----	2
34	8MM06401210A	螺絲 Screw (FT1103 M6-1*12) -----	1
35	90SP0416	止動梢 Stop Pin -----	1
36	8MM06402310A	螺絲 Screw (SH0446 M6-1*23) -----	2
37	231A0001244	調壓螺椿組 Spring Regulator Asm.-----	1

RP004 用於 CT96 機型

2. RP004 輔助拖輪 Puller Mechanism For RP004



	A ²Ö A-TYPE	B ²Ö B-TYPE	C ²Ö C-TYPE	D ²Ö D-TYPE	E ²Ö E-TYPE	F ²Ö F-TYPE
§C,¹	41	42	43	44	45	46
15	4RP004A0241	4RP004A0242	4RP004A0243	4RP004A0244	4RP004A0245	4RP004A0246
32	4RP01A0215-30	4RP01A0215-26	4RP01A0215-24	4RP01A0215-20	2200050113(50) ¾	4RP01A0215-0
	37	38	39	40	41	42
	43	44	45	46	47	48
	49	50	51	52	53	54
	55	56	57	58	59	60
	61	62	63	64	65	66
	67	68	69	70	71	72
	73	74	75	76	77	78
	79	80	81	82	83	84
	85	86	87	88	89	90
	91	92	93	94	95	96
	97	98	99	100	101	102
	103	104	105	106	107	108
	109	110	111	112	113	114
	115	116	117	118	119	120
	121	122	123	124	125	126
	127	128	129	130	131	132
	133	134	135	136	137	138
	139	140	141	142	143	144
	145	146	147	148	149	150
	151	152	153	154	155	156
	157	158	159	160	161	162
	163	164	165	166	167	168
	169	170	171	172	173	174
	175	176	177	178	179	180
	181	182	183	184	185	186
	187	188	189	190	191	192
	193	194	195	196	197	198
	199	200	201	202	203	204
	205	206	207	208	209	210
	211	212	213	214	215	216
	217	218	219	220	221	222
	223	224	225	226	227	228
	229	230	231	232	233	234
	235	236	237	238	239	240
	241	242	243	244	245	246
	247	248	249	250	251	252
	253	254	255	256	257	258
	259	260	261	262	263	264
	265	266	267	268	269	270
	271	272	273	274	275	276
	277	278	279	280	281	282
	283	284	285	286	287	288
	289	290	291	292	293	294
	295	296	297	298	299	300
	301	302	303	304	305	306
	307	308	309	310	311	312
	313	314	315	316	317	318
	319	320	321	322	323	324
	325	326	327	328	329	330
	331	332	333	334	335	336
	337	338	339	340	341	342
	343	344	345	346	347	348
	349	350	351	352	353	354
	355	356	357	358	359	360
	361	362	363	364	365	366
	367	368	369	370	371	372
	373	374	375	376	377	378
	379	380	381	382	383	384
	385	386	387	388	389	390
	391	392	393	394	395	396
	397	398	399	400	401	402
	403	404	405	406	407	408
	409	410	411	412	413	414
	415	416	417	418	419	420
	421	422	423	424	425	426
	427	428	429	430	431	432
	433	434	435	436	437	438
	439	440	441	442	443	444
	445	446	447	448	449	450
	451	452	453	454	455	456
	457	458	459	460	461	462
	463	464	465	466	467	468
	469	470	471	472	473	474
	475	476	477	478	479	480
	481	482	483	484	485	486
	487	488	489	490	491	492
	493	494	495	496	497	498
	499	500	501	502	503	504
	505	506	507	508	509	510
	511	512	513	514	515	516
	517	518	519	520	521	522
	523	524	525	526	527	528
	529	530	531	532	533	534
	535	536	537	538	539	540
	541	542	543	544	545	546
	547	548	549	550	551	552
	553	554	555	556	557	558
	559	560	561	562	563	564
	565	566	567	568	569	570
	571	572	573	574	575	576
	577	578	579	580	581	582
	583	584	585	586	587	588
	589	590	591	592	593	594
	595	596	597	598	599	600
	601	602	603	604	605	606
	607	608	609	610	611	612
	613	614	615	616	617	618
	619	620	621	622	623	624
	625	626	627	628	629	630
	631	632	633	634	635	636
	637	638	639	640	641	642
	643	644	645	646	647	648
	649	650	651	652	653	654
	655	656	657	658	659	660
	661	662	663	664	665	666
	667	668	669	670	671	672
	673	674	675	676	677	678
	679	680	681	682	683	684
	685	686	687	688	689	690
	691	692	693	694	695	696
	697	698	699	700	701	702
	703	704	705	706	707	708
	709	710	711	712	713	714
	715	716	717	718	719	720
	721	722	723	724	725	726
	727	728	729	730	731	732
	733	734	735	736	737	738
	739	740	741	742	743	744
	745	746	747	748	749	750
	751	752	753	754	755	756
	757	758	759	760	761	762
	763	764	765	766	767	768
	769	770	771	772	773	774
	775	776	777	778	779	780
	781	782	783	784	785	786
	787	788	789	790	791	792
	793	794	795	796	797	798
	799	800	801	802	803	804
	805	806	807	808	809	810
	811	812	813	814	815	816
	817	818	819	820	821	822
	823	824	825	826	827	828
	829	830	831	832	833	834
	835	836	837	838	839	840
	841	842	843	844	845	846
	847	848	849	850	851	852
	853	854	855	856	857	858
	859	860	861	862	863	864
	865	866	867	868	869	870
	871	872	873	874	875	876
	877	878	879	880	881	882
	883	884	885	886	887	888
	889	890	891	892	893	894
	895	896	897	898	899	900
	901	902	903	904	905	906
	907	908	909	910	911	912
	913	914	915	916	917	918
	919	920	921	922	923	924
	925	926	927	928	929	930
	931	932	933	934	935	936
	937	938	939	940	941	942
	943	944	945	946	947	948
	949	950	951	952	953	954
	955	956	957	958	959	960
	961	962	963	964	965	966
	967	968	969	970	971	972
	973	974	975	976	977	978
	979	980	981	982	983	984
	985	986	987	988	989	990
	991	992	993	994	995	996
	997	998	999	1000		

2. RP004 輔助拖輪 Puller Mechanism For RP004

序號	物料編號	名稱	單位用量
Ref. No.	Parts Number	Description	Amt. Req.
1	4RP0010201	主動輪座 Upper Feed Roller Yoke -----	1
2	4RP0010202	軸襯 Left Clutch Driving Shaft Bushing -----	1
3	4RP0010203	軸襯 Right Clutch Driving Shaft Bushing -----	1
4	8MM06402010A	螺絲 Screw (SH0444 M6-1*20) -----	1
5	8MN04280400A	螺絲 Screw (CT0229 M4-0.7*4) -----	4
6	4RP0010206	止動梢 Stop Pin -----	1
7	4RP0010207	襯套 Clutch Tension Sleeve -----	1
8	8MA08500613A	螺帽 Nut (RP0208 M8-1.25*6) -----	2
9	4RP0010209	導軌 Yoke Guide-----	1
10	4RP0010210	軸 Yoke Pin -----	1
11	4RP0010211	開口梢 Cotter Pin -----	1
12	4RP01A0212	主動輪軸 Clutch Driving Shaft -----	1
13	90ER090	扣環 Retaining Ring -----	1
14	8MB05320710A	螺絲 Screw (M5-0.8*7) -----	1
15	-----	主動輪 Upper Feed Roller (See Left Page) -----	1
16	4RP01A02161	離合器 Clutch -----	1
17	8SF36400506A	螺絲 Screw (RP01A0217 9/64"-40*6.2)-----	6
18	4RP01A02181	套筒 Clutch Sleeve -----	1
19	90NB2026161	單向滾針軸承 Roller Bearing (HF2016)-----	2
20	8MN06400600A	螺絲 Screw (CT0918 M6-1*6) -----	1
21	4RP01A02211	隔環 Clutch Spacer -----	1
22	4RP01A02221	離合器 Clutch -----	1
23	4RP0010243	波形墊圈 Corrugated Washer -----	1
24	8MB04280507K	螺絲 Screw (FT0235 M4-0.7*5) -----	2
25	4RP0010245	蓋板 Lower Feed Roller Cover -----	1
26	4RP0040226	拉柄 Clutch Driving Lever -----	1
27	4RP0010227	星形壓環 Clutch Tension Spring -----	1
28	4RP0040228	從動輪座 Lower Feed Roller Support -----	1
29	90ST0615	定位梢 Knock Pin -----	2
30	8MM05321209A	螺絲 Screw(FT0524 M5-0.8*12) -----	3
31	8ME03200606A	螺絲 Screw(CT0235 M3-0.5*6) -----	2
32	-----	從動輪 Lower Feed Roller-----	1
33	4RP0040233	蓋板 Lower Feed Roller Cover -----	1
34	8MB85240607K	螺絲 Screw(CT0637 M3.5-0.6*6) -----	4
35	4RP0010235	從動輪軸 Lower feed Roller Shaft -----	1
36	4RP0040236	輔助滾柱 Supplementary Roller -----	1
37	4RP0010237	滾柱架(左) Left Supplementary Roller Stay -----	1
38	4RP0010238	滾柱架(右) Ringt Supplementary Roller Stay -----	1
39	8SF36400606A	螺絲 Screw(RP10217 9/64"-40*6) -----	3
40	8MB04280807K	螺絲 Screw (CT0215 M4-0.7*8) -----	2
41	4RP004A0241	主動輪組 Upper Feed Roller Asm. (See Left Page) -----	1
42	4RP004A0242	主動輪組 Upper Feed Roller Asm. (See Left Page) -----	1
43	4RP004A0243	主動輪組 Upper Feed Roller Asm. (See Left Page) -----	1
44	4RP004A0244	主動輪組 Upper Feed Roller Asm. (See Left Page) -----	1
45	4RP004A0245	主動輪組 Upper Feed Roller Asm. (See Left Page) -----	1
46	4RP004A0246	主動輪組 Upper Feed Roller Asm. (See Left Page) -----	1