

KBH1790A

電子平頭鎖眼機

Computer Control Button-holing Machine



Oil-Free

全機無油化設計，僅有旋梭微量供油，確保高速而清潔的車縫

Oil-free mechanism ensures clean sewing with high speed. Only rotary hook has micro-oil lubrication.



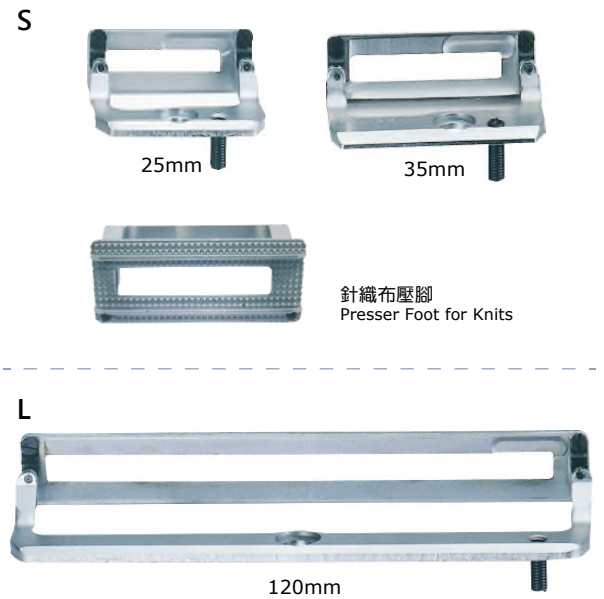
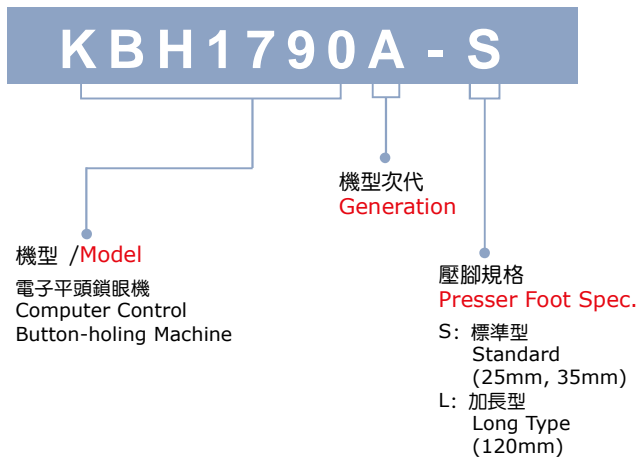
機器與電控整合的一體機設計，簡潔俐落
Compact design of the integrated machine and controller.



高精度步進馬達控制系統，實現數字化操作。
High precision stepping motor control system realizes digital operation.

機型編號說明 MODEL NUMBERING

KINGTEX



機型 Model	KBH1790A	
規格 Subclass	S	L
縫製範圍 Sewing Area	5 x 35 mm	5 x 120 mm
縫製速度 Max. Speed	Max.: 4,200 sti/min, Normal:3,600 sti/min	
針桿行程 Stitch Length	34.6mm	
切布刀尺寸 Cloth Cutting Knife	6.4 ~31.8 mm (1/4" ~ 1-1/4")	
套結寬幅 Bartacking Width	Max. 5.0 mm	
面線張力 Needle Thread Tension	電子夾線器 Electronic thread tensioner	
機針 Needle	DP X 5 (#11) #11~#14	
旋梭 Rotary hook	全迴轉旋梭 Full rotary hook	
壓腳上升量 Work Clamp height	Max. 17mm	
抬壓腳 Work Clamp Lifter	步進馬達驅動 Step motor driven	
送料機構 Feed Mechanism	步進馬達驅動間隔送布 Intermittent feed by Stepping motor	
切布刀驅動 Cloth Knife Drive	步進馬達驅動 Step motor driven	
標準花樣數 Standard Patterns	30 個花樣 / Patterns	
可儲存花樣數 Patterns Storage	最多500個花樣/ Max. 500 Patterns	
外部資料儲存 External Data Storage	經由操作面板USB埠 Imputed by USB port of the control pannel	
主軸馬達 Main Shaft Motor	直驅直流伺服馬達 550W Direct-drive AC Servo Motor 550W	
電源 Power	1-phase 200V~240V, 50/60Hz, 600VA	

多次切 Multiple Knife-dropping

步進馬達驅動切布刀，可依鎖眼長度，智能化計算下刀次數

Stepping motor drive fabric knife cuts the fabric based on the hole length.

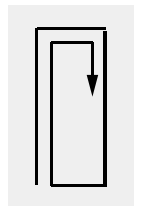


打底縫: 彈性面料適用

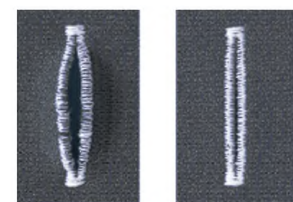
Basting Stitch:
Applicable to elastic material

在車縫前段先打底，避免變形，再接續車縫，打底縫最多可設定9圈。

To stabilize the elastic fabric, make basting stitch in advance and then begin the button holing. Basting stitch setting is max. 9 rounds.



Max. 9 rounds.



打底縫效果差異對比
The result difference with basting stitch.

 精機機械廠股份有限公司
CHING CHI MACHINE CO., LTD
<http://www.kingtexsewing.com.tw>

