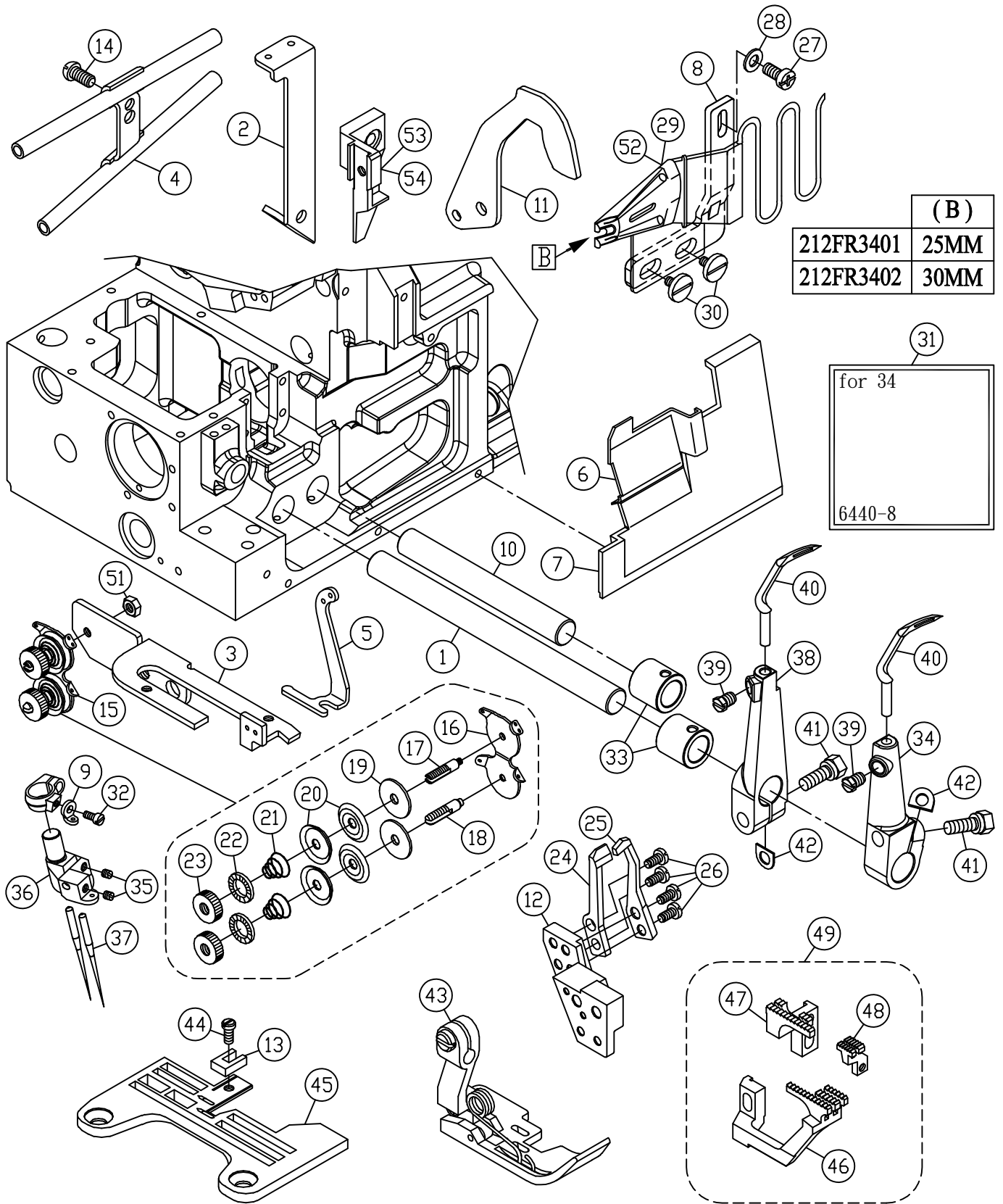


# BD081 雙鎖鏈縫 DOUBLE CHAIN STITCH



(B)	
212FR3401	25MM
212FR3402	30MM

31  
for 34  
6440-8

機型 Models	更換零件 Main Parts	針板 Needle Plate	壓腳組 Presser Foot Asm.	主送布齒 Main Feed Dog	差動送布齒 Differential Feed Dog	輔助送布齒 Auxiliary Feed Dog	針留 Needle Holder
UH9034F-503-M45/BD081		5212TP3401	5212PF0302	5212FD0018	5212DF0015	5212AF0005	5212NC3401

## BD081 雙鎖鏈縫 Double Chain Stitch

序號 Ref. No.	物料編號 Parts.No.	名 Description	稱	單位用量 Amt. Req.	
1	4BD0800117	軸	Shaft	1	
2	4BD0800102	導線	Thread Guide	1	
3	4BD0800103	支架	Bracket	1	
4	4BD0800104	導線管	Thread Guide	1	
5	2120001621	導線	Thread Guide	1	
6	4BD0800106	導布屑	Chip Guard	1	
7	4BD0800107	前蓋	Front Cover	1	
8	4BD0800108	支架	Bracket	1	
9	4BD0800109	導線	Thread Guide	1	
10	4BD0800118	軸	Shaft	1	
11	4BD0800111	揚線環	Thread Guide	1	
12	4BD0800112	導針器座	Bracket	1	
13	4BD0800113	定規	Curl Guard	1	
14	8MC04281207D	螺絲	Screw	1	
**	15	4BD0670134	彈力調整組	Tension Controller Asm.	1
	16	4BD0670142	導線	Thread Guide	1
	17	2100051137	螺樁	Stud	1
	18	4BD0670140	螺樁	Stud	1
	19	2100001127	羊毛氈	Felt	2
	20	2100001126	張力控制盤	Tension Disc	4
	21	4BD0800122	彈簧	Spring	2
	22	2100051135	止滑墊圈	Stopper	2
	23	2100051134	調節螺帽	Nut	2
	24	5212NG0007	前導針器	Needle Guard (Front)	1
	25	5212NG0006	後導針器	Needle Guard (After)	1
	26	8MB03200606A	螺絲	Screw	4
	27	8MC04281207D	螺絲	Screw	1
	28	2100000223	墊圈	Washer	1
	29	212FR3401	導模(25MM)	Binder	1
	30	8MB04280713A	螺絲	Screw	2
	31	66440-8	穿線貼紙	Threading Diagram For UH9034	1
	32	8MB02160404A	螺絲	Screw	1
	33	4BD0800119	軸襯	Bushing	2
	34	4BD0800128	前結線鉤座	Looper Holder	1
	35	8SH32440300A	螺絲	Screw	2
	36	5212NC3401	針留	Needle Holder	1
	37	66732-14	針	Needle	2
	38	4BD0800127	前結線鉤座	Looper Holder	1
	39	8SK44400605D	螺絲	Screw	2
	40	5210CL63416	結線鉤	Looper	2
	41	8MK05321308C	螺絲	Screw	2
	42	2120000435	限位墊片	Spacer	2
	43	5212PF0302	壓腳組	Presser Foot Asm.	1
	44	8MB03200806K	螺絲	Screw	1
	45	5212TP3401	針板	Needle Plate	1
	46	5212FD0018	主送布齒	Main Feed Dog	1
	47	5212DF0015	差動送布齒	Differential Feed Dog	1
	48	5212AF0005	輔助送布齒	Auxiliary Feed Dog	1
	49	5212DG0301	送布齒組	Feed Dog Asm.	1
	51	8SA44400307A	螺帽	Nut	1
	52	212FR3402	導模(30MM)	Binder	1
	53	4BD0800123	上刀座(30MM 用)	Upper Knife Clamp (For 30MM)	1
	54	4BD0800126	上刀座	Upper Knife Clamp	1

\*\* 整組套件